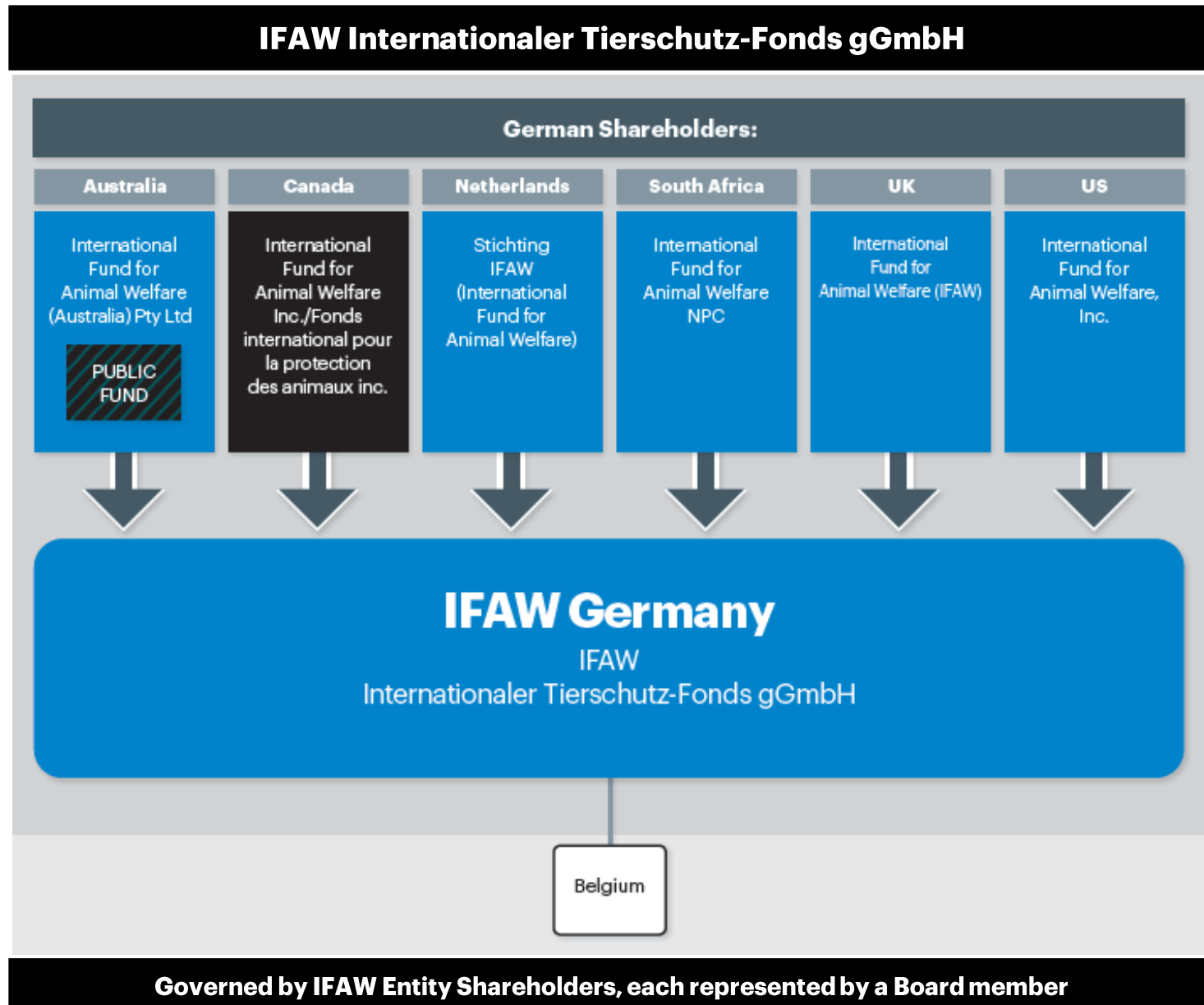


# Germany – Shareholder Structure



# **IFAW Internationaler Tierschutz-Fonds gGmbH**

## **IFAW Entity Shareholders' Governing Bodies (Directors/Members/Shareholders/Trustees)**

### **Australia International Fund for Animal Welfare (Australia) Pty Ltd**

Mark Beaudouin,  
Chair  
Barbara Birdsey  
Joyce Doria  
Catherine Lilly  
Alejandra Pollak  
Judi Wakhungu  
John Albrecht

### **Canada International Fund for Animal Welfare, Inc./Fonds international pour la protection des animaux inc.**

Mark Beaudouin,  
Chair  
Barbara Birdsey  
Joyce Doria  
Catherine Lilly  
Alejandra Pollak  
Judi Wakhungu

### **Netherlands Stichting IFAW (International Fund for Animal Welfare)**

Mark Beaudouin,  
Chair  
Barbara Birdsey  
Joyce Doria  
Catherine Lilly  
Alejandra Pollak  
Judi Wakhungu

### **South Africa International Fund for Animal Welfare NPC**

Mark Beaudouin,  
Chair  
Barbara Birdsey  
Joyce Doria  
Catherine Lilly  
Alejandra Pollak  
Judi Wakhungu

### **United Kingdom International Fund for Animal Welfare (IFAW)**

Mark Beaudouin,  
Chair  
Barbara Birdsey  
Joyce Doria  
Catherine Lilly  
Alejandra Pollak  
Judi Wakhungu  
Catherine Bearder  
Graeme Cottam  
Constantin Bjerke

### **United States International Fund for Animal Welfare, Inc.**

Mark Beaudouin,  
Chair  
Barbara Birdsey  
Joyce Doria  
Catherine Lilly  
Alejandra Pollak  
Judi Wakhungu