

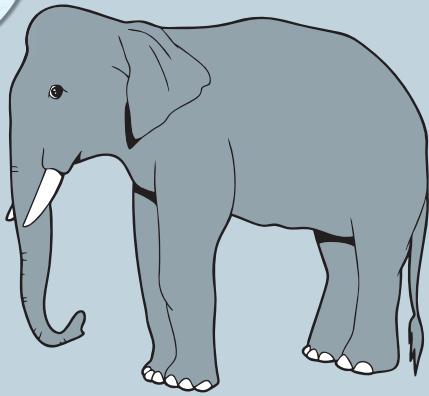
# Big Animals

## SMALL DIFFERENCES

Not all elephants look the same. Some live in Africa, and others live in Asia. How can you tell them apart? These pictures will help you.



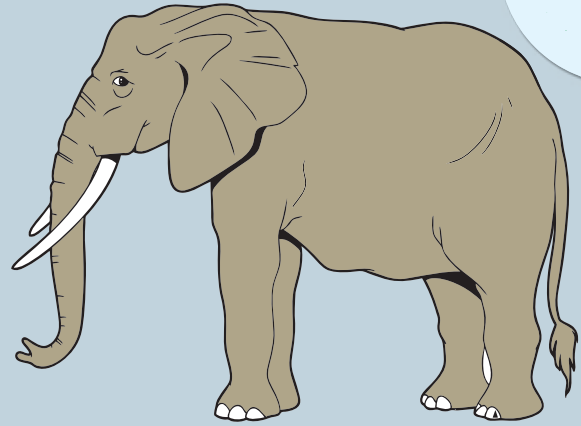
### Elephants in Asia



- It is 8 to 10 feet tall.
- Males weigh up to 11,000 pounds.
- The top of the head is round.
- It has smaller ears.
- The back is rounded.
- Only the males have short tusks.
- The back feet have three toes. The front feet have four or five toes.



### Elephants in Africa



- It is about 10 feet tall.
- Males weigh up to 13,200 pounds.
- The top of the head is flat.
- It has bigger ears.
- The back is flat.
- Males and females have long tusks.
- The back feet have four toes. The front feet have five toes.

## Just for Laughs

**Why do elephants have trunks?**

—Because they would look silly with suitcases!

**How do you find an elephant?**

—Hide under a bush and squeak like a peanut!

**How are a car, a tree and an elephant the same?**

—They all have trunks!

**What is the same size as an elephant but weighs nothing?**

—Its shadow.

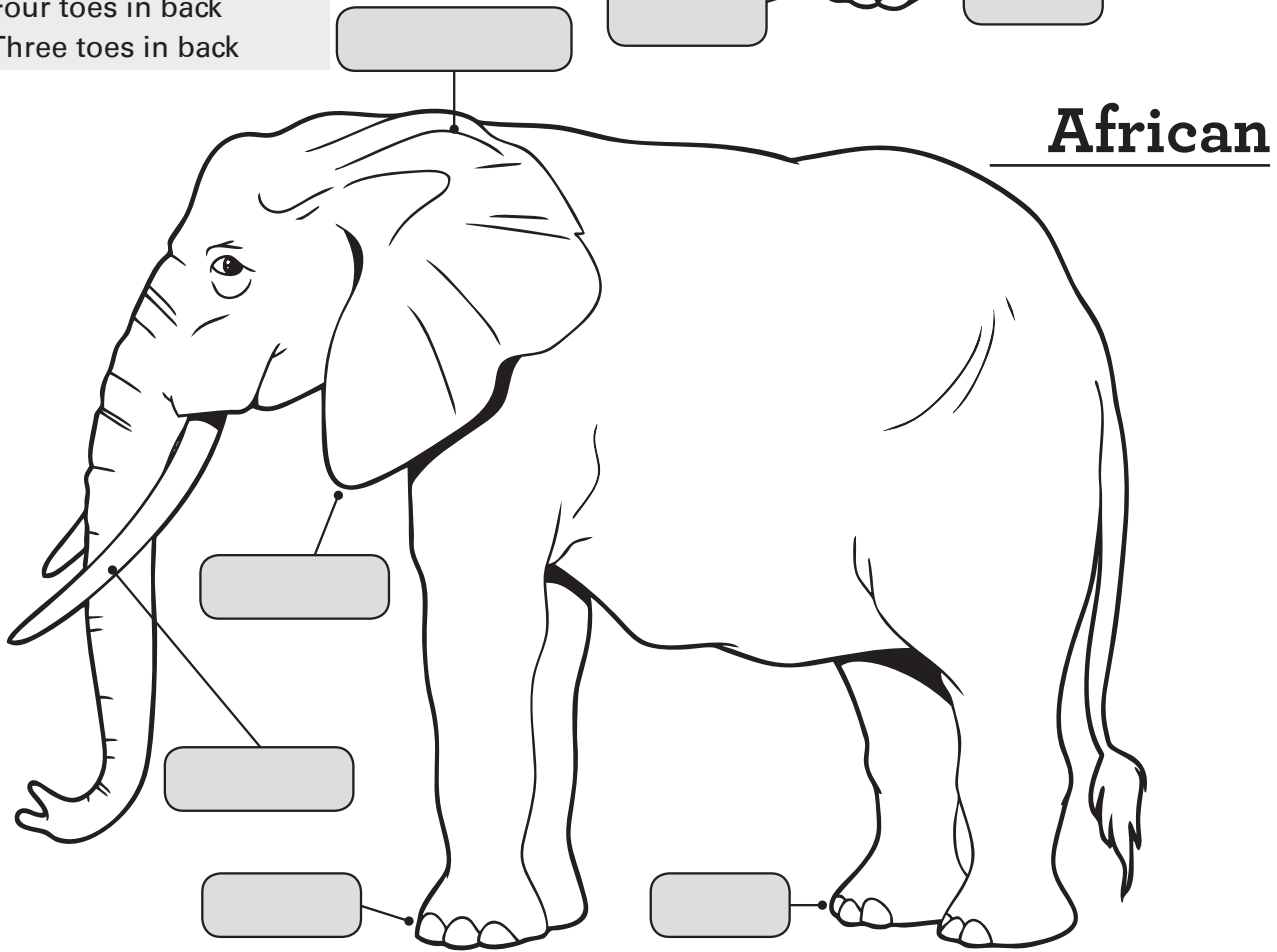
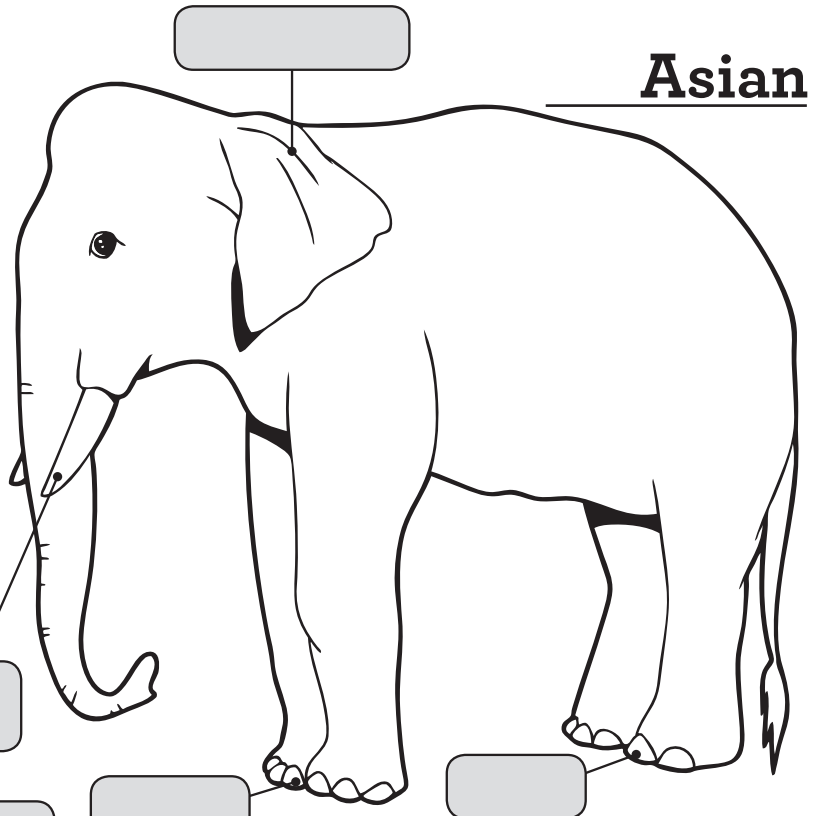


# Spot the Difference

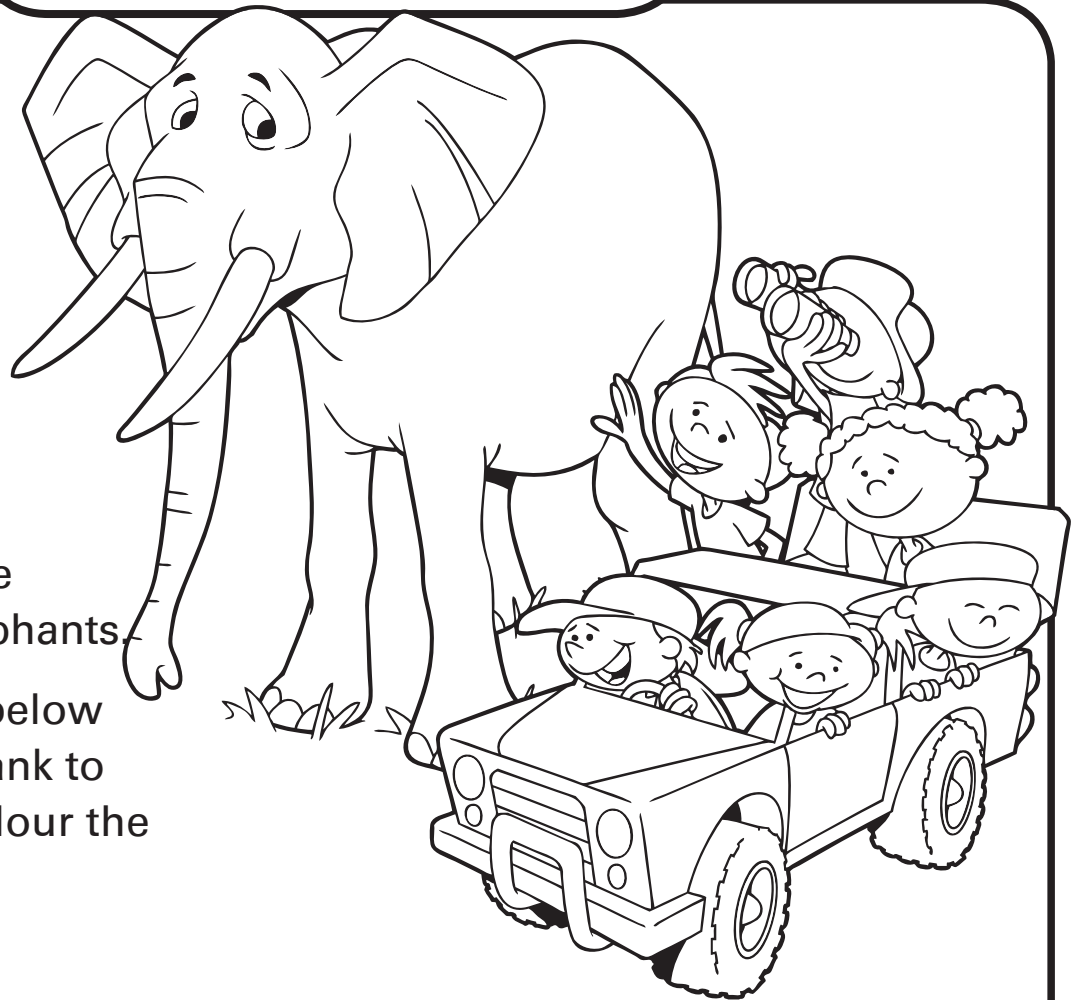
These pictures show an elephant in **Asia** and an elephant in **Africa**. Use what you know from reading *Big Animals, Small Differences*. Label the parts of each elephant's body. You may use words from the Word Bank.

**WORD BANK**

- Bigger ears
- Smaller ears
- Big Tusks
- Small tusks
- Five toes in front
- Four or five toes in front
- Four toes in back
- Three toes in back



# Comprehension



Show what you've learned about elephants. Fill in the blanks below using the word bank to help you. Then colour the picture.

1. Name the two main groups of elephant: \_\_\_\_\_ and \_\_\_\_\_
2. All elephants are \_\_\_\_\_-eaters.
3. All elephants live in family groups called \_\_\_\_\_
4. The leader of the herd is called the \_\_\_\_\_
5. The matriarch is usually the \_\_\_\_\_ female.

## WORD BANK

**African • herds • plant • matriarch • Asian • oldest**