

as wildlife and people run out of space, we're creating Room to Roam

330,000

elephants roaming across Southern and East Africa

60%+

of elephants' range lies outside of formally protected areas in search of food and water

7 million

people live alongside these elephants, a number that is expected to double in the next 40 years

10,000+

elephants are killed every year by poachers; without bold and rapid action, some elephant populations could still be poached to extinction within a generation

► An elephant herd roaming the savannah of northern Botswana.



Photo: © Rudi van Aarde

IFAW's Room to Roam initiative is a new and visionary approach to conservation in Africa, with elephants and people leading the way. Backed by 20 years of science, fieldwork and engagement with local communities, Room to Roam will ensure persistence of viable and stable elephant populations long into the future. **By securing and connecting habitats, and by bringing people together, we will create safe passages for elephants and other wildlife to move freely within their home ranges of Eastern and Southern Africa.** The result is greater biodiversity, a natural resilience to climate change, and a future where animals and communities can not only coexist but thrive.

The problem

Today, more than 330,000 elephants in East and Southern Africa roam across increasingly fragmented landscapes often outside of formal protection, exposing them to threats and human-wildlife conflict. **Climate change compounds the threat of broken landscapes, with animals like elephants risking their lives to travel further than ever for essential water and food to survive.** Decades of conservation efforts have called on human management and interference, often costly or temporary, but we see a better solution.

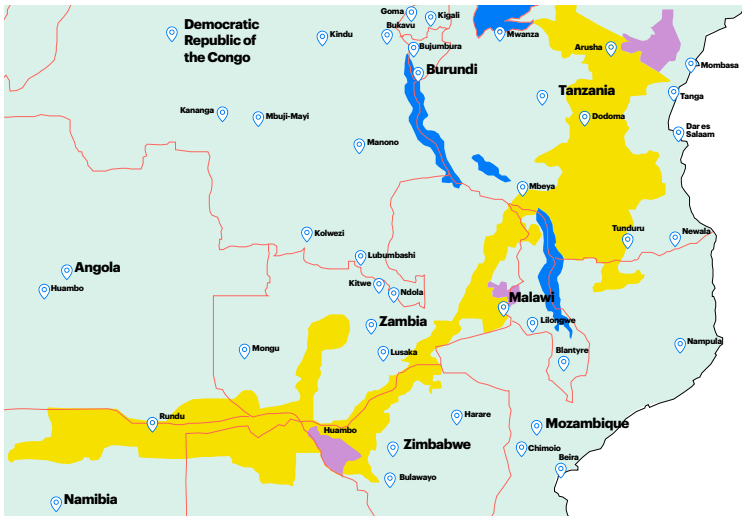


Photo: Donal Boyd / © IFAW

every species and every habitat has the ability to bounce back

▶ Local women and children retrieving water for the Chikolongo fish farm in Malawi that will help the community receive fresh water and a source of income from the sale of fish and vegetables.

The solution

To survive, elephants need safe routes to roam freely through countries, over borders, at a distance from humans. They need access to healthy habitat for food and water, and the natural space and succeed.

We know what a healthy herd looks like, and we believe Room to Roam is how we get there. In continuing more than two decades of IFAW scientific data and fieldwork, we will ensure not only the persistence of viable, stable elephant populations, but also the health of people and the planet at large.

Community impact

Room to Roam doesn't only help elephants and other wildlife—it also opens new opportunities for local communities to enhance their well-being and coexist with wildlife.

Land outside of national parks belongs to communities and private landowners, including traditional leaders, conservancies and land trusts. When we engage communities in natural resource management—whether for ecosystem health and/or as an economic driver—they can be directly involved in planning and implementing long-term solutions.

Partnerships

The context of our work crosses borders, cultures and organizations, meaning that relationships with people are at the heart of our approach and are a key to success.

IFAW is forging partnerships with communities, traditional leaders, governments, private sector actors and other NGOs in a long-term plan to reconnect critical landscapes and allow wildlife and people to flourish.

▶ see more at [ifaw.org](https://www.ifaw.org)



#roomtoroam