



International Fund  
for Animal Welfare

# Saving Lives

ANNUAL REPORT  
JULY 1, 2005 – JUNE 30, 2006





### **IFAW Executive Staff**

**FREDERICK M. O'REGAN**  
President and Chief Executive Officer

**AZZEDINET. DOWNES**  
Executive Vice President and  
Chief Operating Officer

**A.J. CADY**  
Director of Animals in Crisis and Distress

**MICHAEL COTE**  
Chief Information Officer and  
Director of Internal Services

**CASSANDRA KOENEN**  
Director of Online Campaigns  
and Marketing

**NANCY NOBLE**  
Acting Director of Development

**MELANIE B. POWERS**  
Chief Financial Officer

**PATRICK R. RAMAGE**  
Director of Public Affairs

**ROSEMARIE RESNIK**  
Director of Resource Development

**DR. JOTH SINGH**  
Director of Wildlife and Habitat Protection

### **IFAW Worldwide Board of Directors**

**THOMAS C. RAMEY**, Chair

**KEELY SHAYE BROSNAN**  
**ELLIOTT G. CARR**  
**MANILAL PREMCHAND CHANDARIA**  
**ALEXANDRA DENMAN**  
**MARGARET A. KENNEDY**  
**CHRISTOPHER J. MATTHEWS**  
**DAVID METZLER**  
**ROBERT J. MONAHAN JR.**  
**THOMAS P. O'NEILL III**  
**MINOU PALANDJIAN**  
**KATHLEEN SAVESKY**  
**VICTORIA STACK**

**BRIAN HUTCHINSON**, IFAW Charitable Trust, UK,  
Board of Directors  
**SEAN ROCKS**, IFAW Charitable Trust, UK,  
Board of Directors  
**PAUL F. WORTHINGTON**, IFAW Charitable Trust, UK,  
Board of Directors

**ANGELICA ARAGON**, Honorary Board Member  
**PIERCE BROSNAN**, Honorary Board Member  
**GORAN VISNJIC**, Honorary Board Member

### **IFAW US Regional Councils**

#### **WASHINGTON, DC**

**VICTORIA STACK**, Chair  
**LAUREN LILIE**  
**LAURIE MONAHAN**  
**RAISA SCRIBANE**  
**DELMATAYLOR**

#### **NEW YORK**

**RACHEL GLICKMAN**  
**CATHERINE KANGAS**  
**GERALDINE MASLANKA**  
**DAN SAUNDERS**  
**LOUISE SOREL**  
**JEANNIE WILLIAMS**

#### **NEW ENGLAND**

**MINOU PALANDJIAN**, Chair  
**LINDA BEGGS**  
**JESSICA GIFFORD BUSCH**  
**G. KENNETH BERNHARD**  
**CRIS AND SARA FARLEY**  
**JOHN AND DIANA LAMB**  
**CLAIRE ROSENZWEIG**  
**DR. KUMARA SIDHARTHA**  
**ANDREA THOMAJAN**

#### **SOUTHERN CALIFORNIA**

**ALEXANDRA DENMAN**, Chair  
**PAMELA MORTON**  
**ELIZABETH ORECK**  
**JENNIFER LEE PRYOR**  
**KATHERINE ROHRBACHER**  
**BETSY ROSENFELD**  
**NANCY VOLPERT**  
**MITCHELL S. WAGNER**

Spectacular humpback whales make whale watching popular in the Asia Pacific region. © IFAW / © M. MCINTYRE



# A Better World for Animals and People

**The International Fund for Animal Welfare** works to improve the welfare of wild and domestic animals throughout the world by reducing commercial exploitation of animals, protecting wildlife habitats, and assisting animals in distress.



**IFAW** seeks to motivate the public to prevent cruelty to animals and to promote animal welfare and conservation policies that advance the well-being of both animals and people.

**Top:** An IFAW Emergency Relief team veterinarian treated a baby lamb following an earthquake in Indonesia. © IFAW

**Bottom:** At IFAW's Community-Linked Animal Welfare clinic in Dominica, 160 animals were spayed or neutered. © IFAW / S. COOK

IFAW is gaining support for trade bans on seal parts in a number of countries. © IFAW / S. COOK



# Saving Lives and Making Strides toward a Better World

Over the course of this last year, IFAW has made considerable gains on a number of critical animal welfare issues.

As Hurricane Katrina and other disasters buffeted communities, IFAW's Emergency Relief team swiftly mobilized to rescue animals and people.

IFAW's oil spill response in particular has made us a world leader in international oiled wildlife rescue and rehabilitation.

In Kenya's Tsavo National Park, IFAW provided rangers with six new vehicles and 75 radio units to aid anti-poaching patrols. This is just the beginning of our five-year plan to make Tsavo a self-supporting wildlife haven.

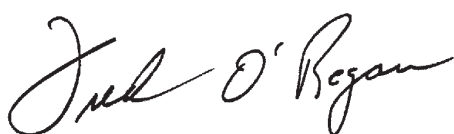
Our research and education vessel *Song of the Whale* completed its first East Coast tour in the United States to promote protection of the highly endangered North Atlantic right whale. Researchers onboard also conducted studies that will help inform a Marine Mammal Action Plan for the wider Caribbean region.

Around the world, IFAW was instrumental in the passage of important regulations to protect animals, from a restriction on the import of marine mammals in Mexico to the designation of the Southern South Africa Sea Area as a 'special area' in need of enhanced protection.

From one million schoolchildren learning to care compassionately for animals, to 7,800 dogs and cats spayed or neutered through Community-Linked Animal Welfare projects, to the 100th orphaned Russian bear cub returned to the wild... IFAW has made great strides for individual animals and entire populations.

These are just some highlights of how your support made a world of difference this past year. As you review this IFAW annual report, I hope you will share my pride in the victories achieved and milestones reached as we work together to make this a better world for animals and people.

Gratefully,



Fred O'Regan  
President and Chief Executive Officer

© IFAW / B. GAVIN



# A Practical Approach that Brings Results

**A**n important aspect of IFAW's mission is to identify and promote practical solutions that benefit both animals and people.

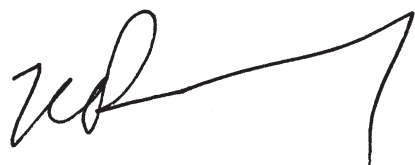
With a global team of world-class scientists and local program staff in 15 countries, IFAW is uniquely positioned to address many pressing global and local needs and deliver long-term sustainable solutions.

IFAW implements successful techniques into sound models to solve similar challenges around the world. Examples include basing efforts to restore Kenya's Tsavo National Park on initiatives developed at Meru National Park, expanding Community-Linked Animal Welfare (CLAW) to care for dogs and cats in the Caribbean, rolling out IFAW Animal Action Week to schools in more countries every year. IFAW's non-invasive research techniques contribute significantly to whale population studies and efforts to protect them.

IFAW focuses not only on the welfare of endangered animals but also those that are victims of cruelty, not just wild animal species but our closest animal companions, and not only the well-being of animals but the well-being of people, too.

IFAW is the most practical organization of its sort dedicated to saving animals and habitat. The achievements chronicled in this annual report illustrate IFAW's expertise in finding real solutions to shared challenges and commitment to promoting a healthy planet on which all life depends.

I am proud to be part of this remarkable community of dedicated scientists, animal welfare experts and organizers of meaningful campaigns around the globe. Your generous support is what makes their work possible.



Thomas C. Ramey  
*Chair, IFAW Board of Directors*

IFAW is helping to protect habitat for giraffes and other magnificent wildlife in Kenya's national parks. © IFAW / D. Willetts



# Making a Difference in Kenya's Largest National Park

**Tsavo National Park** comprises the largest protected area in Kenya, roughly half the country's total conservation area. Through efforts to refurbish Tsavo's physical structures, water and electricity, and to supply rangers and researchers with critical, often life-saving, equipment, IFAW hopes to preserve one of the last vast habitats for wild animals in all of Africa.

IFAW's five-year restoration of Meru National Park showed that once infrastructure and law enforcement capacity are improved, wildlife becomes more abundant and attracts more tourists. This in turn improves local economies and helps make parks self-supporting for the future.

Based on this successful model of Meru National Park, IFAW has made Tsavo National Park a priority program commitment.

IFAW will assist Kenya Wildlife Service (KWS) in its wildlife conservation work at Tsavo in six key areas over the next four years:

## **BASIC PARK OPERATIONS AND INFRASTRUCTURE**

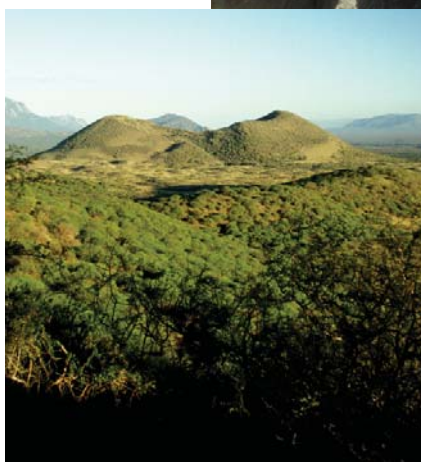
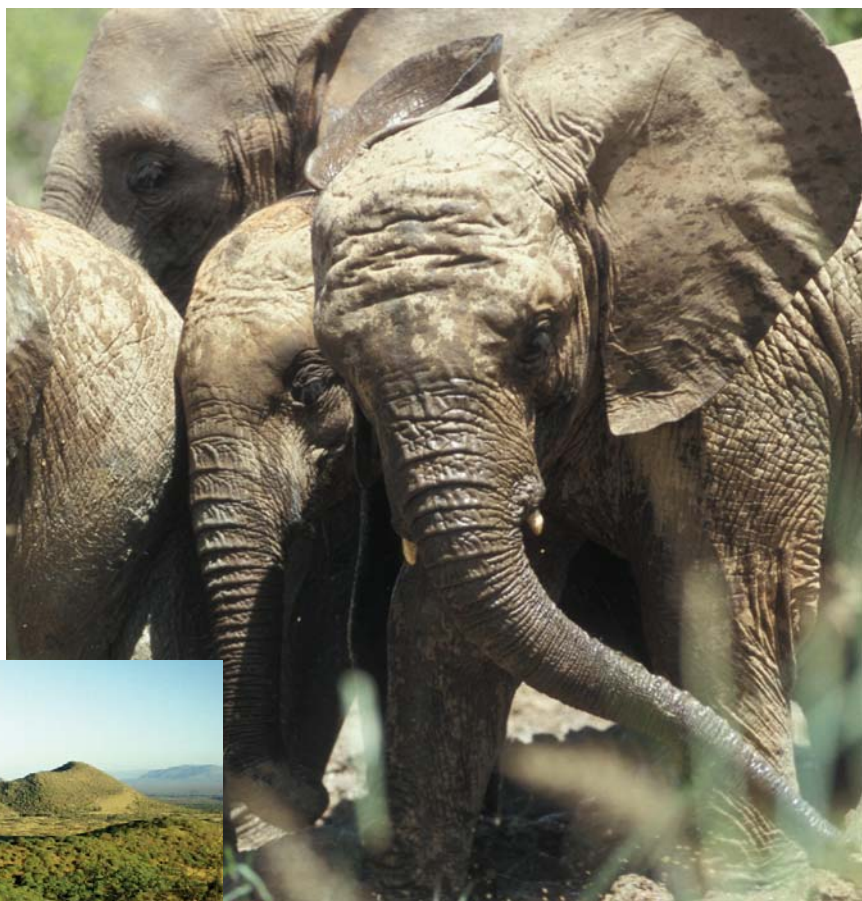
— Office and field support equipment and services are needed to improve the efficiency and effectiveness of the park management.

- \$30,000 will build a standard self-contained ranger house
- \$5,000 will construct a water tank in the northern area of Tsavo East

**LAW ENFORCEMENT** — Reliable transport is essential to protecting wildlife and visitors within the vast national park. Tsavo has been using outdated handheld radios, and the security patrol vehicles are old and hardly serviceable. Today, Tsavo has

some 300 rangers and needs at least 120 handheld radios, as well as more vehicles, to run basic park operations efficiently. IFAW donors have already supplied six vehicles and communications equipment, but much, much more is needed.

- \$54,000 is needed for radio equipment, including 40 handheld units, 10 base stations, 15 mobile stations and 10 solar batteries
- \$1,000 will cover fuel and maintenance of a helicopter and an airborne poaching patrol for one day



IFAW's work to save this majestic park sets the stage for long-term conservation of the greater Tsavo ecosystem in Kenya. © IFAW / D. WILLETTS

## **HUMAN-WILDLIFE CONFLICT RESOLUTION**

— The human population density in areas surrounding Tsavo

has increased significantly in the recent past. As a result, wildlife movement out of protected areas is causing conflicts with humans. Sustainable human-wildlife mitigation measures are needed to increase local people's tolerance of wildlife.

- \$110,000 is needed for 5 kilometers of fencing to reduce human-elephant conflict
- \$35,000 will purchase a pickup truck to improve response time when conflicts arise



## A Loving Promise Kept

J. Dorsch invested in a Charitable Gift Annuity with IFAW to fulfill a promise she made to her aunt. When she was a child her aunt showed her the love animals give us and taught her to care for and cherish animals. When her aunt passed away, she left Mrs. Dorsch a small inheritance. Mrs. Dorsch chose IFAW's Charitable Gift Annuity as a way of thanking her aunt.

"I feel animals need our help the most," she said, "and I think IFAW is the best because you work nationwide and do so much in other countries."

Mrs. Dorsch has also reached out to help animals personally. Once when she was visiting her grown children, her husband found a stray dog while walking the family's Dalmatian. A five-month-old Irish setter came and walked with them. "She was just a shadow she was so thin," Mrs. Dorsch said. It was obvious the dog was a stray so they took her home, named her Gretel and kept her. From then on, when her husband came home from work Gretel would sit on his footstool and look up at him. "There was so much love in her eyes," Mrs. Dorsch said.

Her concern for individual animals inspires her to help all animals. "This is a wonderful way to give because it is something good for me as well," she said. "I would do it again if I could." Mrs. Dorsch's grateful promise is a gift of love to all.

**RESEARCH** — Field research helps rangers make sound management decisions on the conservation of natural resources, inventories, ecological monitoring and evaluation. IFAW supplied new vehicles and computer equipment to enhance studies of Tsavo's invaluable biodiversity, but more tools are needed to aid critical decisions.

- \$1,459 will aid researchers in data collection with four Global Positioning System receivers
- \$1,200 will buy 10 sets of binoculars for researchers

**CONSERVATION EDUCATION** — Environmental problems cannot be fully addressed without the involvement and support of the public. Local communities who rely on natural resources for their livelihoods need education and sensitization to the importance of wildlife conservation.

- \$40,000 will purchase a four-wheel drive hardtop vehicle for mobile education
- \$5,000 will fuel the mobile education unit for three months

**COMMUNITY CONSERVATION** — For many years, unsustainable exploitation of natural resources outside protected areas has been a major threat to the conservation of river flows and wildlife migration. Community conservation projects are being initiated by KWS and IFAW to help people sustain and manage overburdened environments.

- \$55,000 will build a new pipeline to supply clean water to elephants, rhinos and local citizens
- \$3,600 will aid workers in clearing and grading firebreaks in northern areas of the park

IFAW needs to raise at least \$1.25 million to support these vitally important initiatives and many others. Please join us and ensure that Tsavo National Park and its magnificent wildlife are protected for the future.

### IFAW programs that need your support

- Helping Dogs and Cats through Community-Linked Animal Welfare
- Global Whale Conservation
- IFAW's *Song of the Whale* Research and Education Flagship Vessel
- Fighting Commercial Seal Slaughter in Atlantic Canada
- Emergency Relief to Rescue Animals in Crisis
- Protecting and Rehabilitating Bears in Russia
- IFAW Animal Action Week Animal Welfare Education for Children
- Protecting African Wildlife and Habitat in Tsavo National Park

As you read about IFAW's achievements in this annual report for July 1, 2005–June 30, 2006, know that your support for IFAW continues to make a difference.

# Saving Animals, People and Our Shared World

**Thanks to your outstanding generosity,** IFAW has saved many lives in areas fraught with disaster and hardship, in poor communities lacking companion animal care, across wilderness habitats and the world's oceans. Here are highlights of IFAW's work in our priority program areas during fiscal year 2006.



IFAW's ER team assisted in the rescue, care and transport of more than 7,000 animals.  
© IFAW / S. COOK

## Rescuing Victims of Disaster

Following the devastating Hurricane Katrina, which hit the US Gulf States in August 2005, IFAW's Emergency Relief (ER) team deployed to rescue and relocate animals. The IFAW team was based in Gonzales, Louisiana, 50 miles outside of New Orleans. Working with state authorities, IFAW conducted door-to-door search and animal rescue operations in areas where evacuees were forced to leave their pets behind, helping to rescue and relocate

thousands of animals as well as reunite hundreds of people with their missing pets.

During the search, people on a balcony identified an individual who had suffered a stroke and an IFAW team member carried the 70-year-old man out of the flooded house and into the rescue boat.

IFAW also helped coordinate the massive request for pet supplies and shelter assistance from local animal organizations such as the Louisiana SPCA and Louisiana State University Vet School.

Currently, IFAW is collaborating with PetSmart Charities and a number of national and local humane organizations to initiate and support major spay/neuter efforts in Louisiana and Mississippi.

Around the world, oil spills threatened birds and marine environments. Following a mystery oil spill off the coast of Cape Town, South Africa, in August 2005, IFAW worked with the Southern African Foundation for the Conservation of Coastal Birds to rehabilitate 461 oiled African penguins.

In Chile during November, the cargo ship *Eider* ran aground and the resulting oil spill affected marine life and birds over an area of more than seven kilometers. Four IFAW ER team members responded, led by Dr. Valeria Ruoppolo, IFAW's Penguin Network Coordinator. In all, 28 oiled birds were admitted to the rehabilitation center and

27 were successfully released. In addition, the team worked with staff and volunteers from the University of Antofagasta to provide guidance and training on several aspects of oiled wildlife response.

In January 2006, an oil slick of approximately 20 tonnes was discovered in the Baltic Sea off the coast of Estonia. IFAW's ER team — comprised of veterinarians and wildlife rehabilitators from the US, UK, Germany, Russia, Mexico, Belgium and Brazil — mobilized to assist in the rehabilitation of oiled long-tailed ducks, goldeneye ducks and mute swans. The team worked with the Estonian Fund for Nature and the Environment Ministry as well as other groups and local volunteers, and trained local personnel and volunteers.

Then in March, IFAW assisted in providing intensive care for 51 mute swans, whooper swans, herring gulls, mallard ducks and goosanders after fuel oil spilled during transfer from a ship to a chemical plant in southeastern Norway. Forty-four birds were released in this highly successful rehabilitation.

In May, ER team members responded to a mystery spill in Argentina. Several hundred oiled Magellanic penguins washed ashore in the Cabo Virgenes Nature Reserve in Argentina, near the southernmost tip of Patagonia. A rehabilitation center was set up in the town of Rio Gallegos and, as the fiscal year closed, 54 birds had been successfully released and 122 live birds were still in the center.

Natural disasters plagued the Asia Pacific region as well. IFAW responded to the devastation caused by Cyclone Larry in Australia in March 2006. When Mt. Merapi, Indonesia's largest volcano, erupted in May, IFAW rushed assistance to Profauna, the Indonesian Society for Animal Welfare and the Center for Animal Rescue and Education to assist in community evacuations. Field teams coordinated cattle identification, water and feeding programs; arranged animal shelters; organized transportation of food, water, medicine and other supplies.

In the upcoming months, IFAW will be working with organizations in the European Union (EU) and the EU Commission in a collaborative effort to improve oil spill response across Europe. We are also working with penguin rehabilitators in South America to standardize rescue and care protocols in response to chronic oiling.

Your support enables IFAW to rush professional emergency responders to disaster-plagued communities, helping animals and people during critical times of need.



1

Your support enables IFAW to rush professional emergency responders to disaster-plagued communities, helping animals and people during critical times of need.



2



3

**1** When an earthquake struck central Java, IFAW instituted disaster care for injured and displaced animals and provided first aid and food for animals. © IFAW

**2** During Hurricane Katrina, IFAW physically saved more than 700 animals through water and land-based rescues. © IFAW / S. COOK

**3** Four-hundred-thirty-one penguins were successfully rehabilitated and released following a mystery spill in Cape Town, South Africa. © IFAW / T. SAMSON



1

2

Thanks to your outstanding generosity, IFAW has saved many lives over the last year.



3

**1** The elephant population in Tsavo National Park is slowly recovering. You can help IFAW make this magnificent habitat safe homeland for many precious species. © IFAW / D. WILLETTS

**2** 28,000 whales have been killed since the moratorium on commercial whaling began in 1986. Over the next year, 2,500 whales are expected to be killed by whalers. © IFAW

**3** IFAW's Bridget Jones, left, and Dr. Doug Gillespie, center, teach children about whales in the *Song of the Whale* gallery as part of an educational event at the Nantucket Whaling Museum. © IFAW / C. KRONENBERG

## Restoring Tsavo National Park

With its enormous and diverse habitats, the Tsavo ecosystem is one of the last wildlife refuges in Africa. Its unspoiled beauty and wildlife rival any wilderness area in the continent. Tsavo Conservation Area faces major challenges due to its size, remoteness and proximity to the Somali border. Killing of wildlife for trophies and bushmeat is still a major conservation threat, and intense human-wildlife conflict occurs in areas where incompatible land uses are employed. In addition to wildlife and habitat protection at Tsavo, education and awareness programs in local communities are needed.

Thanks to your generosity, over the last year IFAW has provided Kenya Wildlife Service with critically needed equipment: Six new 4x4 Toyota land cruisers to improve security in both Tsavo East and West; 75 units of assorted radio communication equipment for rangers, including 15 mobile radio stations, 5 base radio stations, 40 portable handheld radios and 10 batteries for base radios; as well as seven computers, an LCD projector, and other materials for field researchers. IFAW also helped construct a security outpost.

The last wildlife census conducted in the park in 2005 counted more than 9,000 elephants roaming Tsavo, along with 9,300 buffalo, 1,100 giraffe and 1,000 eland, as well as rhinos, kudus and kongonis. Sadly, two black rhinos were poached in Tsavo East in May 2006. The horns were recovered and poachers apprehended, but this is still a tragic loss.

Another threat to the Tsavo ecosystem last year was a prolonged drought that resulted in many wildlife deaths. But thanks to IFAW, well-supplied rangers were quickly deployed to curtail threats to wildlife from poachers, wildfires and human encroachment.

As IFAW's second year of commitment to restore Kenya's Tsavo National Park begins, we are working to improve the park's management and operations by supplying researchers with more vehicles, radio communication and office equipment, and another security outpost is being constructed.

Tsavo is one of the biggest conservation areas in the world. With your support, IFAW will enable the long-term protection of one of the last vast habitats for wild animals in all of Africa.

## Promoting Whales in Atlantic and Caribbean Waters

During the summer and fall of 2005, IFAW's *Song of the Whale* visited the East Coast of North America. Scientists and educators onboard took part in outreach efforts to support IFAW's campaign to protect North Atlantic right whales, which are highly endangered and threatened by ship strikes and entanglement in fishing gear.

The IFAW team worked closely with Massachusetts' Center for Coastal Studies and Canada's Department of Fisheries and Oceans to conduct a visual and acoustic survey for right whales across the Gulf of Maine to Canada's Bay of Fundy. In collaboration with IFAW's Canadian staff, the team supported the Harbor Porpoise Release Program and the Large Whale Disentanglement efforts, and visited Grand Manan, St. Andrews and

Campobello Island to conduct outreach and education work. In September, *Song of the Whale* and her team traveled to Washington, DC, to highlight the plight of the North Atlantic right whale at special events for donors and government representatives.

From January to March 2006, the *Song of the Whale* team worked off Trinidad and Tobago and the island of Saba in the Eastern Caribbean to carry out non-invasive whale research and education work. The team conducted visual and acoustic surveys to study a range of cetacean species including sperm and humpback whales, pilot whales and dolphins.

The whale and dolphin research will inform the United Nations Environment Programme's (UNEP's) new Marine Mammal Action Plan for the Wider Caribbean Region. Thirteen interns from the region took part in the research.

During fiscal year 2006, *Song of the Whale* also visited Cape Cod and Nantucket, Massachusetts; Miami and Palm Beach, Florida; Charleston, South Carolina; and New York City to support IFAW's US whale campaign through media events, educational visits, donor climb aboards and VIP receptions.

## Protecting Whales from Slaughter

IFAW scientists were the lead authors of a scientific paper titled, "Global Climate Drives Southern Right Whale Population Dynamics," which was published in the Royal Society Journal Biology Letters. A computerized system for matching photographs of southern right whales developed by IFAW made the study possible, demonstrating the value of long-term benign research and reinforcing the point that this type of study could not be achieved with scientific whaling.

In the run-up to the annual International Whaling Commission (IWC) meeting, held on St. Kitts and Nevis in June, IFAW hosted a two-day meeting of Caribbean environmental leaders in Trinidad. This resulted in a strong statement to Caribbean governments to change their pro-whaling positions and support non-consumptive utilization of whales through the development of whale watching and tourism in the region.

At the IWC meeting, Japan managed to get 30 member nations to sign a pro-whaling statement, but IFAW campaigning stopped Japan from winning key votes on issues including coastal whaling and the abolition of the Southern Ocean Sanctuary. Vote buying by Japan and the illegality of Japan's whaling were widely reported in the press. In addition, an IFAW paper presented at the IWC, analyzing whaling footage taken by Greenpeace in the Southern Ocean, underscored the horrific cruelty of Japan's whaling and the inability to secure instantaneous death. Thanks to IFAW's media efforts, the commercial whaling issue reached an audience of 133 million in the Caribbean and around the world.



## In Memory: Virginia Treworgy

Virginia Treworgy was a major supporter of IFAW and an active member of the New England Regional Council. In her short 51 years of life, she made an enormous contribution to conservation as an activist, environmental attorney and philanthropist. For 25 years, Mrs. Treworgy gave tirelessly of her time, resources and expertise to help IFAW protect animals and the environment around the globe.

Mrs. Treworgy's unbounded optimism and dedication to IFAW's mission were an unparalleled inspiration; she always went the extra mile to further IFAW's work and was a major contributor to the success of the new *Song of the Whale* research vessel. Mrs. Treworgy was passionate about IFAW's

work to help preserve the highly endangered North Atlantic right whale.

"She taught us all the importance of the power of generosity — that one person's indomitable spirit and enthusiasm can indeed make a difference," commented IFAW CEO Fred O'Regan.

Mrs. Treworgy's husband, Eric, who shares her passion for making a difference, offers a remembrance of her commitment and spirit: "Virginia saw decades ago that IFAW's mission is critical in helping people understand that compassion must reach to animals as well as to people. She always thought that humans have a responsibility to be good stewards and advocates for animals, who are completely dependent upon us to do the right thing." PHOTO / E. TREWORGY

## Growing Condemnation of Canada's Seal Hunt

Last March, IFAW brought politicians and journalists from around the world to observe and document the Canadian seal hunt. International condemnation against this cruel and unnecessary hunt continues to grow. To date, the reported kill for 2006 was 354,344 seals (the quota was 335,000), the majority of them less than three months old. This number does not account for the animals that were struck and lost and died slow deaths under the ice.

In February, IFAW released a scientific paper titled, "An Investigation of the Effects of Uncertainty on Canadian Harp Seal Management." The report found that the Canadian government's current management approach risks depleting the seal population by more than 70 percent within the next 15 years, a number scientists found to be "alarmingly high."

IFAW continues to lobby governments around the world to ban the trade in seal parts and products. Thanks in large part to IFAW, Mexico banned the trade of marine mammals, including seals, and several countries took steps towards banning the trade in seal parts and products including Belgium, the Netherlands and Italy. IFAW lobbied for bans in Germany, the United Kingdom and the European Union.

## Community Care for Dogs and Cats

This year, 7,800 dogs and cats were spayed or neutered through IFAW's Community-Linked Animal Welfare program (CLAW). And more than 16,000 pets were vaccinated in Latin America, Russia, South Africa, Canada and Dominica.

IFAW conducted an intensive education and spay/neuter campaign in Dominica that included training for local veterinarians, government officials and staff. IFAW veterinarians sterilized more than 160 animals on the island and took many strays off the streets.

In South Africa, where CLAW was founded, primary health care and humane education efforts continue in the informal settlements around Soweto, outside of Johannesburg. Nearly 40 clinics are conducted on a regular basis in these communities. IFAW is also working in the township of Khayelitsha, in Cape Town, South Africa, where CLAW was formerly run out of two large shipping containers. Now, the project has its own land and a fully functioning CLAW clinic.

## Animal Action Week Reaches 1 Million Schoolchildren

In its 13th year, IFAW Animal Action Week reached more than a million young people in countries around the world including Australia, Canada, China, India, Germany, Kenya, Mexico, Netherlands, Russia, South Africa, United Kingdom, United States and, for the first time, Dominica, France and Jordan.

This year's theme, "Caring for Our Best Friends," focused on the unique relationship between people and companion animals. Educational programs, tailored to each country, included a video/DVD and discussion guide, classroom activities, a calendar design contest, and practical information on improving life for companion animals.

School activities reached hundreds of thousands of children: Roughly 2,000 schools in the United Kingdom took part in Animal Action Week activities, about 4,000 French students participated and, in the Netherlands, 40,000 children from 400 schools joined in.

In Russia, Animal Action Week reached 200,000 children from 800 schools, and winners of the calendar art competition were featured in an exhibition at the prestigious Darwin Museum in Moscow.

More than 300,000 students in the US participated as well as an estimated 6,000 students in Mexico.

Thousands of Chinese children entered a composition and drawing competition, and a special photo exhibit in Beijing drew more than 30,000 visitors.

In Jordan, where IFAW launched Animal Action Week in partnership with the Royal Society for the Conservation of Nature, students in more than 3,000 schools took part in a drawing competition that focused on preserving local wildlife and a number of nature reserves in the country hosted programs.

A number of celebrities, including film, TV and sport stars, support IFAW Animal Action Week around the world to help promote the event, which reaches a total audience of well in excess of 100 million thanks to the incredible publicity generated by the media.

Your support made all of these achievements possible.

Your support made all of these achievements possible.



1



2

3



**1** The CLAW education model in South Africa encourages kindness and compassion. As a result, many more children are bringing their animals for treatment and reporting cases of cruelty. © IFAW / E. YOUNG

**2** Animal Action Week US artwork by competition winner Anna Cable, age 10. © IFAW

**3** An IFAW scientific report found that Canada's current management approach risks depleting the seal population by more than 70 percent in the next 15 years. © IFAW / S. COOK

IFAW is helping to rescue and rehabilitate bear cubs orphaned by hunters in Russia. © IFAW / A. LYSKIN







## Partnering to Save Lives

PetSmart Charities, Inc. has been working to improve the quality of life for companion animals since 1994. When Hurricane Katrina slammed into Louisiana, many families had to evacuate without their beloved pets and IFAW partnered with PetSmart Charities to provide desperately needed food, carrying crates and other supplies to local shelters working to save animals' lives. IFAW set up a Web page where shelters could request pet supplies and forwarded the requests to PetSmart Charities. To aid IFAW's disaster response, PetSmart Charities provided a \$25,000 grant for our mobile response unit, travel expenses for veterinarians and medicines and vaccines for pet victims.

"IFAW was remarkable during the disaster for keeping communication channels open and letting everyone know what was going on," said PetSmart Charities Executive Director Susana Della Maddalena. She added, "We have a lot of confidence in their work."

Through in-store donations, shelter adoption partnerships and other nationwide initiatives, PetSmart Charities reaches out to the community to help support animals in need. IFAW's community approach to animal welfare fits well with their mission and we are grateful for their partnership and support. PHOTO / PETSMA RT CHARITIES

## IFAW Offices Worldwide

### ASIA

GRACE GABRIEL  
Director (1)  
© IFAW



1

### ASIA PACIFIC

MICK MCINTYRE  
Director (2)  
© IFAW / S. ROSE



2

### CANADA

OLIVIER BONNET  
Director (3)  
© IFAW / S. COOK



3

### EASTERN AFRICA

JAMES ISICHE  
Director (4)  
© IFAW / E. CICERI



4

### EUROPEAN UNION

LESLEY O'DONNELL  
Director (5)  
© IFAW / S. ROSE



5

### FRANCE

FLORENCE PAQUET-CHAUSSON  
Representative (6)  
© IFAW



6



7

### GERMANY

DR. RALF SONNTAG  
Director (7)  
© IFAW

### INDIA

VIVEK MENON  
Representative (8)  
© IFAW / J. F. MITCHELL



8

### JAPAN

NAOKO FUNAHASHI  
Representative (9)  
© IFAW / F. DOTT



9



10

### LATIN AMERICA

BEATRIZ BUGEDA  
Director (10)  
© IFAW / S. ROSE



11

### NETHERLANDS

MARCEL BERTSCH  
Director (11)  
© IFAW / R. VAN DER LINDE



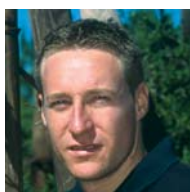
12

### RUSSIA

DR. MARIA VORONTSOVA  
Director (12)  
© IFAW / S. ROSE

### SOUTHERN AFRICA

JASON BELL-LEASK  
Director (13)  
© IFAW / J. HRUSA



13



14

### UNITED KINGDOM

ROBBIE MARSLAND  
Director (14)  
© IFAW / R. MATAMOROS



15

### UNITED STATES OF AMERICA

MONICA MEDINA  
Deputy Director (15)  
© IFAW / P. FISHER

# A Global Reach

Through 15 regional offices worldwide, IFAW promotes priority campaign goals internationally and comes to the aid of people and animals on a local level.

## Asia Pacific

In the wake of Cyclone Larry in March 2006, IFAW provided **EMERGENCY ASSISTANCE** to more than 15 local wildlife centers that needed urgent repairs. With IFAW's support, caretakers were able to rescue, rehabilitate and release wildlife that were injured in the disaster, including koalas and kangaroos.

In May 2006, IFAW released a report titled, "Slaughtering Science: The Case Against Japanese Scientific



**WHALING,**" to combat Japan's plan to expand its whaling program and target humpback whales.

Nearly 1,000 schools took part in various activities to celebrate **IFAW ANIMAL ACTION WEEK.**

Some Pacific humpback whale populations are still critically endangered. IFAW is fighting Japan's attempts to kill any whale from these populations. © IFAW / M. DANBOLT

## Canada

The summer of 2006 marked the fourth year that IFAW was invited into remote James Bay Cree communities in northern Quebec to provide spay/neuter services and humane education. A total of 439 dogs were treated at IFAW's **MOBILE CLINIC** and vets performed 200 spay/neuter surgeries.

In February 2006, IFAW presented its internationally recognized report on **"WILDLIFE TRADE ON THE INTERNET"** to the Commission on Environmental Co-operation. The report was extremely well received and has been distributed across Canada to all regional intelligence officers with Canadian Wildlife Service.

## China

IFAW conducted **IVORY TRADE MARKET INVESTIGATIONS** in nine major cities and on three Internet trading sites, finding that 88 percent of the dealers or manufacturers investigated are engaged in illegal ivory business. After IFAW presented its report, the government stopped the trade in ivory and products on the exposed sites.

## Eastern Africa

In Kenya, the highlight of **IFAW ANIMAL ACTION WEEK** was a pet talk by an Assistant Commissioner of Police and Commandant of the National Police Dog Unit to hundreds of students, who told them: "Animals love us unreservedly and reward us with unflinching loyalty so long as we care for them." This is significant in a society where animals are regarded more for their functional roles than as companions.

IFAW is part of a committee developing the blueprint for national Policy and Legislation on animal welfare in Kenya. This should lay the basis for establishing **CLAW** initiatives in the country.

## European Union

In the European Union, IFAW's campaign to achieve a ban on all sealskins in Belgium reached a critical stage as the legislative proposal was presented to the Belgian Parliament for adoption. The EU office organized a communication event around a giant ice sculpture in front of the Canadian Embassy in Brussels to protest against the **CRUEL COMMERCIAL SEAL HUNT** in Canada.

## France

IFAW organized an ice sculpture exhibition symbolizing cruelty against seals near the Canadian Embassy in Paris. IFAW and two other organizations collected more than 10,000 signatures against the **COMMERCIAL SEAL HUNT** and sent them to Canadian Prime Minister Stephen Harper.

## Germany

Along with the British and Dutch offices, IFAW's German staff launched a **"THINK TWICE"** campaign, making tourists aware of dangers caused by buying wildlife souvenirs. Dis-



plays, information materials and exhibitions can now be seen at four German airports. By negotiating with eBay Germany to ban ivory products from their marketplace, IFAW made an important step towards that goal.

IFAW's "Think Twice" display at Hamburg airport educated travelers about wildlife souvenirs. © IFAW

## India

Floods resulting from heavy and incessant rainfall devastated many parts of western India. IFAW and the Wildlife Trust of India organized **EMERGENCY ANIMAL CARE** camps in seven villages in Maharashtra providing medical care to more than 150 injured livestock and numerous stray dogs.

More than 113,000 schoolchildren across 400 schools all over India participated in **IFAW ANIMAL ACTION WEEK.**

## Japan

IFAW is supporting responsible **WHALE WATCH** operators in Japan to promote sympathy for whales among the public. IFAW also worked with health scientists in Japan on toxins in whale and dolphin meat that are for human consumption to raise public awareness about the dangers of eating cetacean meat. As a result, consumption levels decreased.



## Carrying on a Commitment to Animal Welfare

In his own words, UK donor Kevin Johnson describes why he named IFAW in his will: “My mother had been a long-term supporter of IFAW and, when she passed away, I just carried on supporting them in memory of her. Once I read the literature, I became more aware of the actual work of IFAW.

“The condemnation of the inhumane killing of the Canadian seals was the first aspect of IFAW’s work with which I became familiar and I guess this has always been the topic closest to my heart.

“It is imperative that the work of IFAW is promulgated to our children and they are aware of what is happening to their planet. Matters such as climate change are finally becoming important to people and I hope IFAW will continue to be proactive in dealing with all animal welfare, conservation and habitat issues.

“I am committed to all of IFAW’s projects and believe I will be for the rest of my life. But such atrocities will not stop when my own life comes to an end and it has given me an enormous sense of purpose and well-being to be able to incorporate IFAW into my will.”

### Latin America

The Mexican government prohibited the import, export and re-export of **MARINE MAMMALS** and primates, as well as products made from them. IFAW, Conservación de Mamíferos Marinos de México and a local legislator collaborated to win this victory.

IFAW also won gains on the **MEXICAN ANIMAL WELFARE LAW**, which passed the Environmental Commission of the Senate and went for a vote to the Chamber. IFAW has been working on this law since 2003.

### Netherlands

IFAW’s Netherlands office ran a popular seal exhibition at Sealife. The theme was “Red Ice” in support of IFAW’s **SEAL CAMPAIGN** and IFAW’s efforts to get a trade ban on harp and hooded seals and products in the Netherlands.

Working with Friends of the Earth, IFAW organized a demonstration in front of the ABNAMRO bank an hour before a shareholders meeting asking shareholders not to invest in Shell’s Sakhalin project, which threatens western gray whales off the coast of Russia.

### Russia

Eleven new cubs were rehabilitated at IFAW’s Russian bear project last winter, while three cubs rescued in 2004 wintered in an artificial den at the center. All the cubs were released to the wild.

IFAW’s **MOBILE VETERINARY CLINIC**, the first of its kind in Moscow, spay/ neutered 168 cats and dogs, treated 68 cats and dogs for parasites or disease, and vaccinated 140 dogs and 21 cats against rabies.



In Russia, IFAW celebrated the release of the 100th orphan bear cub into a protected forest. © IFAW / A. LYSKIN

### Southern Africa

In South Africa, IFAW lobbied to prevent culling as a form of **ELEPHANT MANAGEMENT** in Kruger National Park. Instead, extensive scientific research will provide an informed approach to elephants into the future.

Following IFAW’s collaboration with the South African government to find ways to reduce oil pollution, the International Maritime Organization designated the Southern South Africa Sea Area a ‘Special Area’ in need of enhanced protection.

### United Kingdom

Campaigners in IFAW’s United Kingdom office launched a report on **TRADE IN SEAL PRODUCTS** titled “Importing Cruelty” to MPs and key decision-makers in Parliament.

IFAW also carried out an investigation into **WILDLIFE TRADE** on the Internet and succeeded in generating a great deal of media coverage on the issue. As a result, IFAW



developed a relationship with eBay UK to improve their wildlife policies, and drafted a code of practice for Internet Service Providers.

IFAW launched its seal report with an ice sculpture in Trafalgar Square. © IFAW

### United States

IFAW’s US office worked with Congressman Jim Ryun and the family of Haley Hilderbrand to successfully introduce Haley’s Act. Haley’s Act was named in memory of a high school senior who was attacked and killed at a federally



licensed exhibition facility where she was having her photo taken with a tiger. The tiger was then shot. Haley’s Act prohibits direct contact with **LARGE CATS** owned by USDA-licensed exhibitors or dealers and increases fines for violations of the Animal Welfare Act.

There are close to 10,000 big cats in captivity in the United States, including tigers, lions and leopards. © IFAW / A. SULLIVAN

# Ensuring Maximum Funds for Animal Welfare Priorities

**IFAW's donors worldwide** continue to provide generous support for IFAW's priority programs. In honoring this loyal support, IFAW continues to adopt and improve management strategies to yield the greatest impact through practical solutions for animals and people.

Management innovations included aligning institutional support and resource allocation with IFAW's strategic plan. IFAW support departments (Finance, Human Resources and Technology) have developed integrated plans to support IFAW's priority programs. These strategic plans help ensure that resources are in place to implement program goals and that maximum levels of resources are available for direct program expenditures.



There are now more than 9,000 elephants roaming in Tsavo National Park. © IFAW / D. WILLETTS

In the past year donor contributions, combined with all other sources of income, provided total support of \$89m. A slight downturn in bequest income was balanced by increases in contributions. Management faced challenges during the year from currency fluctuations and

the demands of implementing new information systems within the organization. New technology is now in place to support both fundraisers and campaigners alike.

New efficiencies enhance the strategic allocation of resources to priority programs yielding positive income results. Simplifying global banking relationships has resulted in reduced bank fees, maximum short-term investment earnings and the ability to take best advantage of foreign exchange opportunities.

Both the IFAW Board and Senior Management recognize that there are many competing needs for philanthropic resources and that ensuring a sound business platform for IFAW's programs is critical to donor confidence. Annual financial audits and other reviews confirm that IFAW employs best practices of governance and internal controls.

All the IFAW affiliates are in good standing with local compliance agencies and with international standards for accounting, reporting and controls.

IFAW financial management continues to create a platform for expediting effective campaigning. Simple systems, sound business practices and an absolute commitment to integrity and transparency are in place to support the extraordinary work being done by IFAW campaigners around the globe.

*If you have not received IFAW's complete audited financial statements, you may obtain them by writing to: IFAW, Membership Correspondence, 411 Main Street, Yarmouth Port, MA 02675, or to the regional office listed on the back cover.*

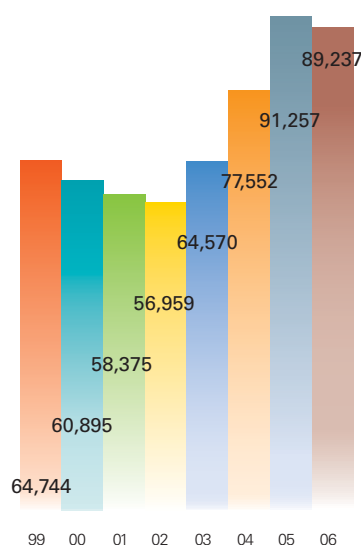
## IFAW Combined Functional Allocation of Expenses

Entity	Location	YEAR ENDED JUNE 30, 2006		YEAR ENDED JUNE 30, 2005	
		Program and Institutional Costs	Fundraising Costs	Program and Institutional Costs	Fundraising Costs
International Fund for Animal Welfare, Inc.	United States	87.4%	12.6%	85.3%	14.7%
International Fund for Animal Welfare	United Kingdom	71.6%	28.4%	74.4%	25.6%
IFAW Charitable Trust	United Kingdom	73.4%	26.6%	69.8%	30.2%
International Fund for Animal Welfare Inc. / Fonds international pour la protection des animaux Inc.	Canada	82.3%	17.7%	83.3%	16.7%
Stichting IFAW — Internationaal Dierenfonds (Nederland)	The Netherlands	78.9%	21.1%	77.3%	22.7%
IFAW Internationaler Tierschutz-Fonds gGmbH	Germany	95.2%	4.8%	94.6%	5.4%
International Fund for Animal Welfare (France)	France	83.7%	16.3%	83.6%	16.4%
International Fund for Animal Welfare (Australia) Pty Limited	Australia	89.6%	10.4%	90.2%	9.8%
International Fund for Animal Welfare (association incorporated under section 21)	South Africa	92.0%	8.0%	93.3%	6.7%

*Functional allocation computations are made based on financial results that are prepared in accordance with local country generally accepted accounting principles. Institutional costs include general and administrative expenses to support IFAW's work which averaged 11% in the years ended June 30, 2006 and 2005, respectively.*

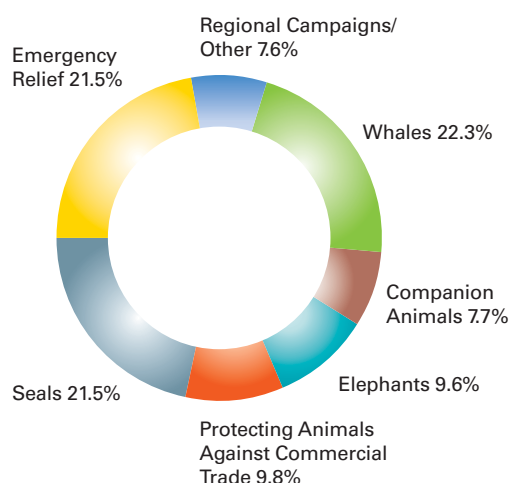
## Financial History

Total Income in Thousands USD



## Direct Expenses by Strategic Priority Area

Fiscal Year 2006



## IFAW Combined Financial Statements (Unaudited\*) For the Years Ended June 30, 2006 & 2005

In Thousands of US Dollars

	2006	2005
<b>ASSETS</b>		
Cash & cash equivalents	\$ 20,021	\$ 15,818
Prepaid expenses & other current assets	8,715	7,395
Fixed assets, net	15,140	8,890
Investments	32,738	38,853
<b>Total assets</b>	<b>\$ 76,614</b>	<b>\$ 70,956</b>
<b>LIABILITIES</b>		
Accounts payable & other current liabilities	10,801	8,001
Notes payable	1,366	—
<b>Total liabilities</b>	<b>12,167</b>	<b>8,001</b>
<b>Net assets</b>	<b>64,447</b>	<b>62,955</b>
<b>Total liabilities &amp; net assets</b>	<b>\$ 76,614</b>	<b>\$ 70,956</b>
<b>PUBLIC SUPPORT &amp; REVENUE</b>		
Supporter contributions	\$ 76,821	\$ 74,829
Bequests	9,642	13,263
Other income	2,774	3,165
<b>Total public support &amp; revenue</b>	<b>89,237</b>	<b>91,257</b>
<b>EXPENSES</b>		
Program & operating expenses	88,246	81,168
<b>Total expenses</b>	<b>88,246</b>	<b>81,168</b>
<b>Excess (deficit) of public support &amp; revenue over expenses</b>	<b>\$ 991</b>	<b>\$ 10,089</b>

\*Financial statements for each of the IFAW entities are prepared in accordance with local country accounting principles and are audited separately. The combined financial statements are prepared on a basis that approximates accounting principles used in the United States of America.



# Worldwide Contributing Supporters

**IFAW is grateful for the generosity of the supporters** who make up our *Circle Club*, *Champions for Animals*, *Future for Animals Society* and the *Pet Fund*. These outstanding contributors stand by us each time we save an elephant family from poachers, rush to rescue cats and dogs from hurricanes, free an orphaned bear, or save an injured animal's life. IFAW also extends heartfelt thanks to donors who help us protect animals through bequests, charitable gift annuities and other planned gifts, ensuring continued protection for animals for years to come.

We would like to recognize the following donors who made generous gifts to IFAW between July 1, 2005, and June 30, 2006.

## Circle Club

IFAW gratefully recognizes the individuals listed below for their leadership gifts to our animal welfare efforts. This significant worldwide support makes long-lasting achievements possible through science, law, politics, economics, public education and hands-on aid. Thank you, *Circle Club* donors, for your continued support.

### CHAIRMAN

#### US\$100,000 and above

Anonymous  
Anonymous  
Leonard X. Bosack & Bette M. Kruger Charitable Fund  
Dhr. W. M. Overkleeft  
Mr. William N. Vaughan

### PRESIDENT

#### US\$50,000 to US\$99,999

Anonymous  
Disney Wildlife Conservation Fund  
Ms. Juliana Kickert  
Save the Tiger Fund  
The Schad Foundation  
The David P. Tenberg Charitable Foundation

### AMBASSADOR

#### US\$25,000 to US\$49,999

Frau Margareta Albrecht  
Elinor Patterson Baker Trust  
Mr. Ben Stein & Ms. Alexandra Denman  
PetSmart Charities  
Mrs. Margaretta Taylor Trust for Mutual Understanding  
United Animal Nations  
Goran & Ivana Visnjic  
Wallace Genetic Foundation

### FOUNDER

#### US\$10,000 to US\$24,999

Anonymous  
Anonymous  
Anonymous  
Asian Tigers K. C. DAT  
Mrs. M. Bach  
Katrin Baumann  
Miss Margaret Boyd  
Ms. Shirley Brine  
David & Jan Bundy  
Cape Cod Five Cents Savings Bank Charitable Foundation  
Leonardo DiCaprio Charitable Foundation  
Mrs. S. Edwards  
T. Hughes  
Mr. Gilbert Andre Jauffret

Rico Kadgien  
The Kayne Foundation  
Belina L. Lazzar  
Lorraine Levine  
The Makray Family Foundation  
Mr. & Mrs. David Metzler  
Ms. Sandra J. Moss  
Minou & Peter Palandjian  
Thomas C. Ramey  
SPLOOL Inc.  
Cathy & John Turney  
Mr. & Mrs. Mitchell S. Wagner  
Mrs. Marjorie Wallace  
Ms. Elizabeth S. Wiskemann  
Zodiac

### PARTNER

#### US\$5,000 to US\$9,999

Greater Milwaukee Foundation's Arthur T. Anderson Family Fund  
Animal Welfare Trust  
Anonymous  
Anonymous  
Anonymous  
Anonymous  
Edythe & Sol G. Atlas Fund  
Ms. Lorraine E. Cantor  
Michele & Agnese Cestone Foundation  
Mrs. M. E. Delves  
J. M. Fitzherbert  
Fondation 30 Million D'Amis  
Foundation M  
Gifford Family Foundation  
Mrs. E. A. Gilkerson  
Mr. H. Grobien  
Firma Klein Grundstücksgesellschaft  
Mr. Robert T. D. A. Haveron  
Mrs. Lynne Cooper Harvey  
Dr. Phyllis A. Huene  
Ms. Mary C. Kennedy  
Gudrun König  
Friedrich Steinle Kraftverkehr GmbH  
The Lemmon Foundation  
William Lerach, Esq.  
Ms. Sandy Lerner  
Ms. Mary Ann E. Mahoney  
Eva-Maria Mann  
Dr. Lindsey Matheson  
Mr. & Mrs. Christopher J. Matthews

Ms. Gertrude Maxwell  
Mr. & Mrs. Art Nagle  
Miss Newton  
Pacific Life Foundation  
Mrs. E. Phyoumi  
Pilarczyk Media Groep  
Mrs. E. Ramsay  
Christopher B. Smith  
Mr. Cyrus W. Spurlino  
Judi & Howard Strauss Foundation  
Stromovka Pty Ltd  
Mrs. Rosamond Walbert

### PATRON

#### US\$2,500 to US\$4,999

Anonymous  
Mrs. G. Ashley  
A. E. Biesta-van Mourik  
Ms. Linda L. Beggs  
Mrs. Karen Bevilaqua  
Charles Bowlus  
Mrs. Lois D. Brounell  
Ms. Betty J. Brown  
Dr. Manu Chandaria  
P. Connock  
Mr. & Mrs. U. Cookson  
Mrs. C. C. Culver  
Mr. K. Dahl  
Ms. Toni J. D'Avello  
Partij voor de Dieren  
Erin Ellison  
Ann English  
Mr. & Mrs. Cris Farley  
Marcus Private Foundation  
Mrs. Charles D. Foy  
Ms. Bonnie Garner  
Amy Gates  
Frau Juliane Gotzen  
Mrs. C. R. Green  
Frau Christa Haindl  
Sherleen Hervey  
Ms. Anne G. Hess  
Frau Bianca Homrighausen  
W. J. vd Berg  
Edward Bangs Kelly and Elza Kelley Foundation, Inc.  
Mr. Robert Kilby  
Ms. Jeanie Kilgour  
Kinnickinnic Realty Co.  
Rosemarie Körner  
Mr. & Mrs. John D. Lamb  
The Lend-A-Hand Society  
Miss Irene Linsley  
Mr. Chris Mack  
Alois & Shirley Meitz  
The Miller Foundation  
Mr. Raymond F. Niendorff  
Miss Eve M. O'Brien  
Mr. Michael O'Connell  
Ms. Mary O'Keefe

Ms. Jean L. Pardee  
Maria & Wolfgang Petersen  
Mrs. C. Pye  
Claire & David Rosenzweig  
Mrs. Fiona Russell  
Günter Schmiedel  
Mr. John Scourfield  
Ms. Victoria L. Stack  
Ms. Laura C. Swift  
Miss L. A. Tarleton  
Mr. & Mrs. David Thede  
Stiftung Hilfe für die bedrohte Tierwelt  
Mrs. A. Wadsworth  
Ms. Maryann Wallace  
Mrs. D. Waugh  
Mr. J. Webster  
Debbie Weiers  
Mr. P. Winch  
Mr. M. Winkler  
Hans Wolff

### FRIEND

#### US\$1,000 to US\$2,499

Anne-Mette  
Mr. J. C. Allen  
Anonymous  
Anonymous  
Anonymous  
Ms. Ashley Susan Aarons  
Billie Allen  
American Foundation Corporation  
Pierce Armstrong Trust  
Australian Travel Specialists  
Elena Avetissian  
Mrs. M. Bagge  
Elise M. Balcom  
Cooper Banning  
Ms. Anne C. Barasch  
Mr. W. J. Beer  
William Bergin  
Miss E. C. Bickell  
Big Dogs  
Lotte Bischoff  
George & Kay Bittner  
Lucienne Blanchot  
Mr. Alan E. Boles, Jr.  
Miss Skye Bortoli  
Mr. R. Bradley  
Mrs. C. N. Brayshaw  
Ms. Sheila Broderick  
Miss Alison Brookes  
Ms. Elizabeth Broucek  
Jim & Yuko Brumm  
Mrs. Margaret Budgett  
Mrs. Glenice Burford  
California Veterinary Specialists  
Ms. Isabel L. Campbell  
Ms. Maria S. Cantwell  
Mr. C. Carberry  
Mrs. Franklin M. Cist  
Ms. Linda J. Clark  
Dr. Charles F. Colao  
Mr. Brant Cooper  
Miss M. E. Cowley  
Mrs. M. M. Cowper  
Ms. Ellen B. Davis  
Carmelina De Santis  
Avatara Devi  
Olga Diatchenko  
Gudrun Diedert  
Mr. & Mrs. Giosue J. DiMassa  
Robert G. Docters  
J. & J. M. Donisthorpe  
Mrs. Elizabeth Dudzik  
Mr. David W. S. Dunlop  
Amtsgericht Bad Dürkheim  
Mr. Cyril Dwek  
Ms. Shirley Eikhard  
Barry & Cecilia Eldred  
Mrs. Lyn Edwards  
Gage Bush Englund  
G. E. Eyre Charitable Trust  
Ms. Sheila M. Fitzgerald  
Petra Frank-Diebels  
David B. H. Fremouw  
Mrs. Barbara Fried  
Josip Fuduric  
Mrs. B. Fuller  
Claudia Gaglione  
Mr. & Mrs. Ron Garret  
Ms. Mari H. George  
M. W. Geraets  
Rita Geserick  
David & Connie Gillis  
Mrs. I. Gipps  
Mr. R. E. Glenn  
V. Goff  
Ms. Adelaide P. Gomer  
Ms. Linda M. Gordon  
Mr. D. P. Grant  
Mrs. Susan L. Grau  
Mrs. U. Greenhalgh  
Shelia Greer  
The Henry H. & Laurel K. Greer Foundation  
Mrs. D. Grills  
Else Haas  
Ms. Carola Hakkert  
Mr. D. Harris  
Karen Haskel  
Herr Manfred Hauswald  
Virginia Hawley  
Ms. Jan Hayden  
Mrs. Deborah I. Haynes  
Julian Hayward  
Ms. Liz Hearing  
Jacob & Teresa Hershey Foundation  
Ms. Linda S. Hodges  
Mr. William Hodgins  
Sam & Catherine Horton  
Mr. J. Hough  
Ron & Cheryl Howard Foundation  
Mrs. J. Hukins  
Mrs. A. Hulme  
Melanie Isbister  
Neil Johnston  
Miriam Kaitz  
Ms. Barbara K. Kajija  
Catherine & Ed Kangas  
Ms. Hildegard Katz  
Mr. John Kelsall  
Ms. Colleen Kennedy  
Joni Kennedy  
Miss M. A. Kingma  
Miss G. Kirby  
Ms. Pauline H. Blair Knight  
Hans & Ruth Koch  
Herr Christoph Kruyer  
L. & E. Meridian  
Miss F. V. Lane  
Ms. Lola E. Langner  
Mr. Peter Laskas  
Ms. Kristin Luhn-Jensen  
Ute Leicht  
John Leone



## A Compassionate Tribute Helps All Animals

Bill Payden has been donating to IFAW since 1996. He established a Pet Fund to demonstrate his love for his Siamese cat Neely knowing that the gift will continue to help animals in perpetuity. "The IFAW Pet Fund enables you to care about your own animals and those you will never meet," Mr. Payden said, adding, "There are so many animals around the world who are suffering." The IFAW Pet Fund is an endowed fund whose interest supports IFAW's Community-Linked Animal Welfare projects, which bring owner education and veterinary care to pets in the world's poorest communities.

Mr. Payden has always loved animals and grew up with cats. "I have always been a compassionate person, and animals allow me to be more compassionate," he said. Neely turned 15 this year so his Pet Fund gift is a fitting tribute to his longtime companion.

A journalist, college professor, public relations specialist and world traveler, Mr. Payden appreciates IFAW's approach to addressing animal welfare and companion animal issues around the world. "There is a strong bond between animals and people," he said, "and IFAW honors that bond."

Marguerite Leone  
Mr. Tuomas Leone  
Beau Lester  
Janet Leveck  
Mr. Michael J. Lindley  
Miss Maud Lloyd  
Mrs. Barry Long  
Daryl Lowenthal  
Mrs. Betty White Ludden  
Ms. Reenie Brown  
Makowsky  
Manhasset High School  
Miss D. Marshall  
Jacqueline Maurer  
Mr. & Mrs. Kevin McCaffrey  
Miss P. M. McGuiggan  
Mrs. Patsy McIntyre  
Jean McPartland & Mary  
McPartland  
E. Mees  
Mrs. Rachel L. Mellon  
Mrs. R. C. Merchant  
Judith S. Merrill  
Ms. Sandra Messinger  
Mr. John L. Metro  
Linda Meyer  
Ms. Leslie Anne Miller  
Nelly Montiel  
The Mosaic Foundation of  
R. & P. Heydon  
Donald Muir  
Muscarella  
Jeanne Newman  
Ms. Chrystine Nicholas  
Mrs. A. S. O'Dowd  
Mrs. M. Ohara  
Lila Ollmann  
Mr. Thomas P. O'Neill III  
Mr. Gilman Ordway  
Mr. Fred O'Regan  
Ms. Laura M. Ost  
Peter Otten  
Miss M. Owen  
Paul & Dionne Palandjian  
Palos Animal Hospital  
Mrs. M. Paterson  
Dhr. E. Penha  
Irmgard Pfaffinger  
P. S. 253 The School of  
Multicultural Humanities  
Andrea Pernick  
Mr. Simon Pinniger

Melanie Powers  
Ms. Carol E. Poynter  
Mr. & Mrs. Harold Prince  
Mrs. H. F. Pritchett  
Puttin' on the Dawg  
Robyn Rineer Quitmeyer  
Rackemann, Sawyer &  
Brewster  
Rainbow Farms (Pty) Ltd.  
Miss M. Ragge  
R. N. A. Rambonnet  
Mrs. J. Ramsey  
Ms. Audrey A. Recht  
Leslie A. Register  
Hilmar Reichold  
Rosemarie Resnik  
Celia Robarge  
Ms. Alice K. Robinson  
Paul & Melanie Robinson  
Friedrich Roderfeld  
Dr. Walter M. Rosen  
D. Rubino  
The San Diego Foundation  
Ms. Peta G. Sanderson  
Mr. Santanu Sarkar  
Volker Sauer  
Mr. Daniel Saunders  
Anna Schlossmacher  
Rolf Schopf  
Edward Schmults  
Mr. & Mrs. Peter M. Schwab  
The Harry Schwartz  
Foundation  
Ms. Marla Schwartz  
Gillian E. Servais  
Ms. Lynette Shapiro  
Mr. Wade Shavell  
Sher & Blackwell  
William Sheriff  
Mr. & Mrs. Kevin Shields  
W. & Clinton-Jones  
Showering  
Ms. Julie C. Shumer  
Dr. Kumara Sidhartha  
Ms. Elizabeth B. Simon  
Ms. Carol A. Slipetz  
Mr. George E. Small  
Miss W. Soames  
Mr. Paul M. Sonnino  
Ms. Sara A. Stalnaker  
Helga Starzmann  
Paul Tensen Stichting

Ms. Kathleen E. Sullivan  
Ms. Paula M. Szortyka  
J. M. A. Tanner  
Target Software, Inc.  
Mr. & Mrs. Donald W. Taylor  
Ms. M. Taylor  
Andrea & Greg Thomajan  
Mrs. Sheila Thomason  
A. H. Tieleman  
Caroline Toomey  
James B. Townsend, Jr.  
Ms. Irene Trautman  
True Blue Cruises  
Davies C. Trust  
Dr. N. M. Tweedie-Stodart  
Mr. Michael Vacchione &  
Mr. Kevin Poole  
Ms. Amber Valletta  
Nellie Van Deth  
W. J. van Elden  
David Varnes  
Ms. Marisa Vera  
Ms. Marion Vincent  
Mrs. J. B. von Bothmer  
Masha Vorontsova  
Mr. E. Wainwright  
Wallace Global Fund  
Dr. Carrie L. Walters  
Mrs. K. Ward  
Mrs. S. Waters  
Mr. James C. Waugh  
Dr. W. Henry Weinberg  
Mr. & Mrs. Edward Wenger  
Mr. Ernest White  
Mrs. Whitworth  
Mrs. L. Williams  
Paul Williams  
Mrs. Dorothy M. Williamson  
Jim & Liz Williamson  
Tsubura Wilson  
Ms. Elisabeth Rhoades  
Wineberg  
Ms. Linda Sue Young  
Zodiac Pool Care, Inc.  
Lion R. Zust

## Future for Animals Society

IFAW honors generous supporters who pledge bequests or make other planned gifts with membership in our *Future for Animals Society*. By establishing charitable gift annuities or naming IFAW in their wills, donors can be sure their concern for animals will continue beyond their lifetimes through IFAW's worldwide programs.

### BEQUESTS

Elizabeth Adair  
Ruth Mary Adams  
Ivy Addis  
Sheila Alcock  
R. V. Aldridge  
Nancy Allen  
I. Allen  
K. Allen  
Marjorie Amberman  
F. E. Anderson  
F. C. Anderson  
Miss Andrew  
M. Anthony  
L. Armitage  
S. Arnold  
W. Arsllett  
Vera Ashton  
Joan Astbury  
R. Atkins  
Doris May Atkinson  
Yvonne Atwood  
Doris May Audus  
P. I. Bailey  
Pamela Ivy Rosina Bailey  
D. F. Baker  
E. M. Baker  
C. M. Ball  
Isabel Martha Barker  
Chester Barnas  
N. Barnett  
E. Barras  
Sophia Freiter Barth  
Winifred Bartholomew  
A. S. Bartlett  
Geoffrey Lumley Bate  
M. D. Bate  
I. E. Bayley  
B. Beak  
A. J. Bean  
S. Beard  
V. Becerra  
Shelia Becher  
Mary Ellen Bell  
Rita R. Bell  
Thomas Kenneth Bell  
T. A. Bellamy

Valerie Beller  
M. Bennett  
W. H. Bennetts  
M. Berger  
F. L. Bessant  
E. Best  
Mona Bowen Bethune  
J. Biggs  
T. Bignall  
I. R. Billings  
P. R. Lewis Bizley  
V. Black  
Winifred Florence Blackwell  
Pamela Mary Stewart Blake  
J. Bland  
Muriel Barwell Blanks  
Nancy J. Blend  
Roy Edward Blinkhorn  
Jane Blunt  
Florence Boagey  
O. M. Bolt  
R. C. Boomkens-Bloemink  
P. Boothby  
A. J. Borstlap  
Dorothy Helen Boshier  
B. M. Boys  
Coletta Brandstetter Trust  
V. M. Brandwood  
C. E. Bridger  
D. Briggs  
S. Brisland  
Anita Josepha Broch  
Sarah Brodsky  
S. Bromley  
H. J. Bronstijn  
P. R. Brook  
B. V. Brookhouse  
R. Broomhead  
Helen Abel Brown  
Lucille Brown  
D. P. Browne  
Sheila Bruce  
Jean Bryson  
R. M. Buckingham  
M. H. Buckler  
Maria Bühler  
C. J. Bungenberg-de Jong



Virginia Burman  
Winifred Margaret Ga Burnett  
Gladys M. Burns  
Margaret Healey Burnside  
Adelaide Burridge  
Laurie Louise Butler  
Gwen Callnan  
Margaret Sheila Cameron  
W. Margi Campbell  
M. C. Campbell  
R. Carey  
E. A. Carson  
D. Caryer  
Catherine Patricia Cassidy  
A. J. Chambre  
Kathleen M. Chappell  
Victoria May Charley  
J. B. Cheverton  
M. Christie  
M. E. Clark  
D. B. Clark  
Gertrude Roberts Clarke  
V. V. Clarke  
Philip Cocker  
Geoffrey William Cockerill  
A. G. Conway  
Loreen D. Cook  
A. R. E. Cook  
Sylvia Cooke  
E. F. Cooney  
Eva Cooper  
Gwyneth Cooper-Jones  
Mr. Copping  
Edith Corbett  
Mary Louisa Corbyn  
Carolyn Cornwell  
K. Cosh  
J. Cotter  
D. Coultous  
Alan B. Cox  
Marie Iris Cox  
Dorothy Helen Cox  
Gertrude Vera Cox  
D. E. Craggs  
J. Cramer  
Dorothy Grace Mary Craston  
C. J. Croon  
E. Crowe  
B. Crowther  
Beryl Jean Crump  
M. Cunningham  
Doreen Mary Curtis  
Marjorie Dale  
Dr. F. Marino D'Amato  
Arthur Claude Dangerfield  
G. M. Darley-USmar  
B. Davidson  
Monica Davidson  
Valerie H. Davies  
N. Davison  
H. E. de Loos  
S. M. Dean  
Beatrice Mary Matilda Deith  
O. F. De-La-Haye  
Virginia M. Deloney  
Dr. N. G. P. Derounian  
Edith Digate  
Lorraine Doreen Dobbins  
C. L. Dobson  
Eleanor Maud Dobson  
N. Dodds  
E. F. Donovan  
Ingeburg Döring  
Josephine Dorsch  
Maude Elizabeth Dover  
Lucilla Drinkwater  
A. Dudgeon  
M. Duncan  
Patricia Dungate  
Gertrude Maude Dunning  
N. Eade  
Daphne S. Ebbitt

Albert Edward Edgell  
G. Edwards  
F. Eggleton  
Gwendoline Veronica Ellis  
Frances Elznic  
J. J. Emmelot  
Dorothy E. Entwistle  
N. Esdaile  
D. Evans  
Patricia Everett  
K. M. Eves  
B. Eveson  
Faye Ewing  
V. Fare  
Dorothy J. Farnan  
Natalie Anne Farnsworth  
S. Ferragu  
J. D. Fife  
J. Fletcher  
V. L. Fletcher  
R. Flynn  
Floyd K. Follett  
M.B. Fox  
Joyce Margaret Fox  
J. Foy  
M. W. Frame  
D. J. France  
A. Freeman  
Hilda Catherine Freeman  
C. Frissen  
M. A. Gache  
Dorothy J. Ganster  
Alfred Walter Willia Garner  
Irene Alice Garner  
H. H. Garrard  
T. Gavin  
Carol Geis  
P. M. B. E. George  
M. F. George  
J. Gerrard  
Marguerite Hope Gibson  
Gisela L. Gielisch  
L. R. Gillett  
Grace A. Gilman  
E. M. Glover  
Marion Godbold  
Lilian Mabel Goddard  
J. E. Godfrey  
Odette Golden  
Margaret Gore  
Harold Gottlieb  
Anita Graham  
Freda J. P. Graham  
K. Grant  
Mark Gravinger  
P. Gray  
G. M. Greaves  
Everett H. Gregory  
Lucy Gregson  
M. M. Griffin  
Anne Louise Griffin  
Megan Griffiths  
B. M. Grocott  
Raymond Gundry  
Edna Mabel Louise Gunning  
Rosa Haar  
Lorine V. K. Haines  
L. Hall  
M. Hallows  
A. Halsey  
Bertha Winifred Hancock  
Irene Margery Hancox  
Ann Elizabeth Hannam  
Joan Eva Harding  
Wilfred Lewis Harman  
J. Harman  
S. G. Harris  
P. E. Harris  
I. N. Harrison  
O. L. Harrison  
Rosamond Doris Harrison  
Paul Hawkins

J. Hawkins  
Patricia A. Haxton  
E. R. Haydon  
H. A. Hayes  
Madeline Frances Haywood  
Hedley  
M. M. Hesp  
Frederica Hale Hide  
G. V. Higginbottom  
R. F. Higgins  
Vincent Hillyer  
E. V. Hobden  
Frank Hodenius  
J. Hodge  
I. N. Holden  
D. Holder  
I. N. Holland  
E. Holland  
Edith Oakley Holt  
Benjamin James Homer  
I. D. Hood  
Ruth Hooker  
Kurt Höpfner  
J. P. Horn  
C. M. Horsford  
Walter Howlett-Young  
Ann Huff  
Dustin Hughes  
M. Hughes  
L. R. Hunt  
Bruce Hunter  
M. Hunter  
Pamela Patricia Hurley  
Jocelyn Audrey Innes  
Kenneth Arthur Jackson  
Freda Mary Jackson  
Siegfried Jaisle  
Russel G. Janes  
D. J. Jenkins  
Marjorie E. Johnson  
E. Johnson  
B. K. Johnson  
Janet Coull Johnston  
Geraldine R. Jones  
M. Jones  
E. Jones  
E. Jordan  
R. A. Kayll  
J. Keedwell  
A. Keirnan  
A. Kemp  
Marjorie Pearl Kerwood  
R. Kessell  
Gabriela Kessler  
Dorothy Kathleen Kimber  
Z. Kincel  
Violet King  
N. Kippax  
Christina Kirkwood  
June Elizabeth Kathl Kirton  
Theonne Klotz  
W. F. Knapman  
Käte Knauer  
Kerstin Knoche  
Ingrid Knope  
Doreen Mary Knudsen  
S. H. Kootstra  
Ursula Kossatz  
Ursula Kutheil  
J. M. Lach  
Molly Joan Lake  
A. P. Langridge  
Marie LaPlaca  
Lieselotte Lauerer  
Eva Lawrence  
Joan Dorothy Laycock  
M. Le Flem  
Danforth H. Leach  
Michael W. Lee  
T. S. Lee  
Catherine Lee  
Peter Roy Lewis-Bizley  
Rosemary B. Llewellyn

Marie Lockmuller  
E. Lord  
J. K. Lotinga  
Martha G. Lowry  
Raymond Seymour Lucas  
J. Luker  
E. W. Lumsden  
H. Ruth MacKay  
Catherine Currie Macmillan  
W. J. Marrink  
J. Marshall  
William M. Martin  
Dorothy A. Martin  
Marian Martin  
J. Martyniuk  
Elsie Lilian Mason  
V. Matthews  
J. Maynard  
Jane McAuliffe  
Margaret McCabe  
A. J. McCulloch  
Clem McDermott  
Sally McGhie  
Gordon K. Mcilrath  
Hazel Jacqueline McKay  
S. McKenzie  
A. Mcmillan  
Patricia McNeil  
Myrtle V. Mealey  
Freda Vivienne Mealor  
I. C. Mein  
I. Meldrum  
Elsie May Melville-Murray  
Guido Michielin  
O. Miles  
Arthur Frederick Walter Miles  
Mary Joyce Mills  
Francesa Dorothy Misson  
Denis Edward Mizen  
A. L. Morfitt  
Carolyn Morgan  
Ethel Clarke Morland  
Luise Morlock  
B. Morrison  
B. Mortimer  
Dorothy Mowle  
Christine Mullikin  
Bernard Austin Murray  
Roland Walter Naylor  
Gladys Johnson Neill  
Ida Nelson  
M. Newall  
Esther Newall  
Cyril John Newton  
Joan Noble  
E. Norris  
P. Nuttall  
Ruth O'Brien  
M. Oddie  
Muriel Jeanette O'Donnell  
H. Oliphant  
Helen R. Olson  
Edna Muriel O'Neill  
J. E. Ore  
Anna Maria O'Shea  
Goldie Otters  
Madeline Owen  
Jean Owen-Jones  
W. E. Ozga  
D. R. Paget  
Hilda Margaret Paice  
Diana Sylvia Palmer  
Jeanette Parker  
Isabel Mary Paton  
Heather Jean Patterson  
Maurice Peach  
Marianne Emilie Pearce  
Brunhilde Pellar  
Betty Penny  
M. L. Perry  
Borrell Peter  
Isabella Peterson

G. Pheasant  
Jessica Phillips  
Sidney Reginald Phillipson  
Harry Pickersgill  
Pamela Ann Pierce  
Muriel Pike  
Josephine E. Pitt  
C. M. Platt  
J. W. Plumley  
Melvin William Davis Pooley  
Nancie Pope  
Iris Ellen Potter  
Jean Povey  
T. Prescott  
R. Pritchard  
D. Pybus  
S. Quinton  
J. Radyk  
V. G. Raine  
Jean Raisey  
Annie Randall  
Muriel Joyce Reade  
A. V. Reed  
Elisabeth Rehm  
Charlotte Reilly  
Euphrasia Reynolds  
Edith Mary Rickards  
G. M. Roach  
George Osbourne Robertson  
V. L. Robinson  
A. Robinson  
Lettice Gertrude Robinson  
Ivy Robinson  
N. Roco  
L. Roe  
D. Rogers  
I. Roman  
I. G. Rose  
Eileen Florence Rose  
Marjorie Ross  
Gerald David Rowlands  
Frank Rowley  
J. B. Rowling  
James F. Russ  
Barbara Russell  
Karolyn Ruth  
L. D. Rutty  
E. Sage  
Victor John Savill  
Patricia Ann Sawyer  
J. D. Sayer  
Gladys Sayer  
E. C. Schaefer  
Eva Schaub  
Clotilde Schlayer  
Wilhemina Catharina  
Schmeising  
Erna Schmidt  
Gloria F. Schock  
William F. Schwenn  
Irene Scrivener  
Margaret L. Sears  
Betsy Bernice Segal  
Alexandra Regina Selby  
D. I. Senior  
Daniel George Sexton  
J. Sharp  
Janet B. Shea  
Diana Margaret Shipp  
Harry Shirley  
Marianne Sieber  
E. Simpson-Berson  
Roy Singleton  
Albert Ernest Slater  
J. J. Smink  
G. Smith  
J. Smith  
Olivia Manning Smith  
J. Smyth  
Irene Ellen Sommerford  
B. Southey  
Geraldine E. Spencer

J. Stacey  
 P. Stapley  
 F. M. Stark  
 P. M. Steane  
 T. G. Stebbings  
 Leslie Walter Steeds  
 B. Stephens  
 G. Stern Hanf  
 M. G. Steven  
 O. Stevenson  
 K. P. Stinson  
 Emily J. Stites  
 F. Stoker  
 C. Stokes  
 Hilde Stoll  
 Marjorie Beryl Suffolk  
 F. M. Swire  
 S. Sworn  
 Violet Ellen Tallent  
 J. Tasker  
 Edna Alice Taylor  
 Kathleen Aza Taylor  
 Derek Eason Walton Taylor  
 Marie C. Tenk  
 Valerie Y. E. Thomas  
 M. H. Thorp  
 Thomas A. Tinkler  
 Helen L. Titus  
 G. Tomber  
 Ann Torrey  
 E. P. Townsend  
 Brenda Muriel Howard Tripp  
 Samuel Trust  
 Ernest Harvey Tweddle  
 Jean Upton  
 R. van Dijk  
 J. van Dulleman  
 H. van Tright  
 Nora Vartanian  
 Josephine Vaughn  
 Sheila Iris Elizabeth Verbaan  
 L. Vickery  
 H. J. Vos  
 Margaret K. Vowles  
 James B. Wadsworth  
 Anne Wagner  
 V. Waive  
 E. Waite  
 Joan Walker  
 Jean Margaret Watson  
 Betty M. Welfare  
 R. Weller  
 Elfriede Wernhöner  
 J. Wenban  
 Phyllis Mabel West  
 R. Wheatley  
 E. M. Whiffin  
 J. Elizabeth White  
 S. White  
 Cecilia Edith White  
 M. N. Whitmarsh  
 T. M. Whitting  
 J. F. Wicksteed  
 Susan Wild  
 R. G. Wildgoose  
 Kaye J. Williams  
 A. V. Williams  
 H. M. C. Williams  
 Ida Millicent Williams  
 Rose Wolfson  
 G. N. Wood  
 M. B. G. Wood  
 Beryl Joan Wood  
 M. Woodhead  
 V. Woodward  
 E. M. Woolford  
 Patricia Ann Wootton  
 Ursula Wösthoff  
 L. Wright  
 Yvonne Wunderlich  
 Olive Daisy Lily Midwinter Yell  
 Ida Barker Young  
 Dorothy Zahn

## Pet Fund

The *IFAW Pet Fund* is a great way to honor and thank your best friend. Named for your pet, your fund supports pets in some of the world's most impoverished communities. Your gift is invested into a permanently endowed fund at IFAW, and the annual interest supports Community-Linked Animal Welfare (CLAW), a unique animal welfare program serving pets in disadvantaged communities around the world. CLAW supports mobile clinics that provide owner education, veterinary care and sterilization programs. CLAW promotes the strong bond between owners and their pets by helping people understand that healthy pets contribute to the good health of the entire community.

Anonymous  
 THE TONI FUND

Anonymous  
 THE MEPHISTO & NIKE FUND

Linda L. Beggs  
 THE FREDDY FUND

Sandy C. Bell  
 THE ZEPPELIN & BOZ and KEZZY & BUDDY BOY and POOCHIE & TANGEY and TUXEY & FAT BUDDY and JOBY & BABY FUNDS

M. Bonham-Carter  
 THE PATCH FUND

Linda J. Campbell  
 THE LACEY FUND

J. M. Cartwright  
 THE PERRY FUND

Ray Castellani  
 THE CASTELLANI DOG FAMILY FUND

G. E. Cook  
 THE SUKI FUND

G. Ellis  
 THE MINNIE FUND

Miss M. A. Thunder Fairfield  
 THE LEILA FUND

Jeffrey G. Fischer  
 THE HOMER FUND

Kurt & Judith Fish  
 THE BUCKY FUND

Mrs. J. Lawrence Frank  
 THE ROSIE THE CAT FUND

Fred & Barbara Fried  
 THE BUSTER FUND

Karen L. Gibson  
 THE TAZMAN and AFTAN FUND

Suzanne L. Goodson  
 THE FIONA FUND

G. R. Gratton  
 THE CASTOR & POLLOX FUND

Gloria Gray  
 THE SALLY FUND

C. R. Green  
 THE SMARTIE FUND

Abby Ann Griscom  
 THE VINNIE FUND

Nina Carolyn Gut  
 THE BRANDY & SHERRIE FUND

Jan Hayden  
 THE MARSHMALLOW FUND

Michael & Deborah Haynes  
 THE PIXIE, PUMPKIN, HOBIE CAT, SIMON, MUPPET AND MAMA FUND

Hans J. Heine  
 THE KLEINHUND FUND

Ankh Hemminga  
 THE JOERI FUND

Dr. Phyllis A. Huene  
 THE GIGI FUND

Richard Koerner  
 THE TIBBY & BUSTER FUND

Christopher & Traci Morris  
 THE GINGER, MOLSON, GOLDY & WYNTON FUND

Laura M. Ost  
 THE GHANDI FUND

William Payden  
 THE NEELY FUND

Joan A. Payden  
 THE NEELY FUND

Don & Shirley Pence  
 THE BUFFY FUND

Les Pioch  
 THE OZZIE, RILEY, ZIGGY & BUBBA FUND

Hal & Judy Prince  
 THE ROSIE/EMILY FUND

Robin S. Rawls  
 THE KITTY RYE FUND

Robin S. Rawls  
 THE MISSY LOU FUND

Carol H. Ray  
 THE BUDDY FUND

Jeff & Sharon Rosenblum  
 FUND OF OUR FRIENDS

Wendy Rosenblum  
 FUND OF OUR FRIENDS

Alison B. Rubin  
 THE CINNAMON SPICE FUND

Mary E. Shamrock  
 THE PATCH FUND

Dr. Sarjit K. Sidoo  
 THE HARI FUND

Sara A. Stalaker  
 THE BRONSON FUND

Donald & Delma Taylor  
 THE BENTLEY MANCHESTER PET FUND

Richard & Jill Tidman  
 FUND OF OUR FRIENDS

Michael Vacchione & Kevin Poole  
 THE BONNIE & MITTENS FUND

## Corporate Matching Gifts

Many companies match their employees' donations. A matching gift program may double or even triple your donation, so it will go even further to protect animals and habitat.

AAA  
 AES Thames L.L.C.  
 Aetna Foundation Inc.  
 The Allstate Corporation  
 Altria Group, Inc.  
 AMD Matching Gifts Program  
 American Express Foundation  
 American International Group, Inc.  
 Amerprise Financial  
 Amgen Foundation  
 Aon Foundation  
 Avon Foundation  
 Bank of America Foundation  
 Black & Decker Corp.  
 BP Foundation Inc.  
 Cardholder Management Services  
 Casey Family Programs  
 Cigna Foundation  
 Computer Associates  
 Driehaus Capital Management, Inc.  
 Eaton Vance Management  
 Energy for Others  
 Exxon Mobil Foundation, Inc.  
 Fannie Mae Foundation  
 Matching Gift Companies FY'06  
 First Data Corporation  
 Freddie Mac Foundation  
 GAP Foundation  
 Genentech  
 Harcourt Education  
 Highfields Capital Management LP  
 HP Employee Charitable Giving Program  
 Hudson-Webber Foundation  
 Hunter Douglas, Inc.  
 Hyperion Solutions Corporation  
 Illionis Tool Works Foundation  
 ING Foundation  
 ITG Inc.  
 JustGive  
 Katten Muchin Rosenman Foundation  
 Kimball Hill Homes  
 Liberty Mutual Group Corporate Giving  
 McGraw-Hill Companies  
 MassMutual Financial Group  
 McKinsey & Company, Inc.  
 Microsoft Matching Gifts Program  
 Nissan North America, Inc.  
 Nokia, Inc.  
 Nstar Electric & Gas Corporation  
 Matching Gift Companies FY'06  
 Nuveen Investments, Inc.

NYTimes Company Foundation, Inc.  
 Old Mutual Asset Management Charitable Foundation, Inc.  
 Oppenheimer Funds, Inc.  
 Pearson, Inc.  
 Pepsico, Inc.  
 Pitney Bowes  
 Random House, Inc.  
 Reed Elsevier  
 Robert R. McCormick Tribune Fund  
 Rockefeller Brothers Fund  
 Rockefeller Philanthropy Advisors  
 Russell Corporation  
 Sabre Holdings Give Together Campaign  
 SEI Investments  
 Tenet Healthcare Foundation  
 Matching Gift Program  
 The Children's Place  
 The Fremont Group Foundation  
 The J. P. Morgan Chase Foundation  
 The JM Foundation  
 The May Dept Stores Company Foundation  
 The McGraw-Hill Companies  
 The Pfizer Foundation  
 The Prudential Foundation  
 Matching Gift Companies FY'06  
 The Sallie Mae Fund  
 The Wachovia Foundation  
 The William & Flora Hewlett Foundation  
 Unilever United States Foundation, Inc.  
 United Way of Kitsap County  
 Verizon Foundation  
 Washington Mutual Foundation  
 Wellpoint Foundation  
 Williams Community Relations  
 W. W. Grainger, Inc.



## A Lifelong Passion for Animal Welfare

IFAW Senior Advisor Cindy Milburn has been passionate about animal welfare since she was a child growing up in Hong Kong. Her early work at the RSPCA, EarthKind, and World Society for the Protection of Animals in the UK provided a framework for addressing a wide variety of issues and concerns.

She joined IFAW in 1996 as UK Country Director, then came to the US to manage IFAW's Animals in Crisis and Distress Program. IFAW has won a number of successes under her leadership, most notably the historic ban on hunting with hounds in the UK.

Over her career, the internationalization of society has taken place and Ms. Milburn's work at IFAW has turned to address both concerns for individual animals and the worldwide challenges we all face. As a large multinational organization, IFAW is at the vanguard of these global issues and we have a unique opportunity to use globalization for the good of the planet.

In her current role, Ms. Milburn is looking at world trends and how they affect our priority species. For example, climate change is the single greatest threat to animals and IFAW is looking especially at the effects on marine mammals. "IFAW policy development must be informed by the best scientific thinking to address the root causes of problems and not just their symptoms," she said, "but science alone will not provide the answers — an ethical decision-making framework is required for determining our course of action."

Under Ms. Milburn's direction, IFAW is creating policy statements on key issues. This helps us direct our programmatic work as well as communicate our identity to donors. Donors provide valuable feedback into the process as IFAW establishes policies and develops best practices for its campaigns. She believes this helps IFAW engage donors in a meaningful way to make a difference for animals, and to make the world a better place for all. PHOTO © / S. ROSE

### In-Kind Donors

Abbicci Restaurant  
Karin & Howard Bearse  
Peter Beaton  
Boston Red Sox  
Brain Power Training  
Cape Air  
Cape & Islands Paranormal  
Research Society  
Cape Cod Melody Tent  
Center Stage Café  
Chatham Bars Inn  
Fred Collard  
William Davis  
Leonardo DiCaprio Foundation  
Dyad Communications, Inc.  
Thomas Dunlay  
Sandy Every  
Expressions of Don Freedman  
The Farley Family & The White  
Whale  
Garber Travel  
Hapenny House, Nantucket  
Jack Hill  
Hot Diggity Dog  
Marieluise Hutchinson  
Hyannis Country Garden  
Initiative Media

Katie Jenkins-Brown  
Kon Limousine  
Market Development Group  
Susie McLean  
Mermaids Booty  
Claire Murray  
Naked Oyster Bistro &  
Raw Bar  
Peter & Minou Palandjian  
James Pruett  
R. Rice & J. Miller  
Pictureframer & Gallery  
San Souci of Cape Cod  
Shearwater Excursions  
Springer and Jacoby  
Victoria Stack  
Ben Stein & Alex Denman  
Sylvia Antiques & Four Winds  
Craft Guild  
Target Software  
Vanderbilt Gallery  
Goran & Ivana Visnjic  
The White Elephant  
White Marlie  
Victoria Whiting

### Champions for Animals

*Champions for Animals* are special donors whose regular monthly support enables IFAW to respond immediately when animals need our help. Champions have their monthly contributions deducted automatically from their bank accounts, saving time, postage and check processing costs. These valued supporters ensure that when animals face danger or disaster, IFAW experts can rush to their aid.

**If you would like more information or would like to make a contribution to IFAW, please contact:**

**International Fund for Animal Welfare  
Resource Development Office  
411 Main Street  
Yarmouth Port, MA 02675 USA**

**Telephone: 1 888 251 0253 / Email: [giving@ifaw.org](mailto:giving@ifaw.org) / [www.ifaw.org](http://www.ifaw.org)**



The Honorable Moody Awori, Vice President of Kenya, accepts a check from IFAW President Fred O'Regan at the Tsavo Conservation Area project launch. © IFAW / D. WILLETTS

This stray dog was rescued as part of IFAW's spay-a-thon in Roseau, Dominica. © IFAW / S. COOK



# A Better World for Animals and People, Thanks to You

**There are many ways** you can leave a lasting and meaningful legacy to animals...

## Future for Animals Society

Throughout IFAW's history, contributors have provided a legacy of hope to animals and their habitats by giving through their estates.

By pledging support to IFAW in your will, investing in a charitable gift annuity or by designating IFAW as the recipient of another planned gift, esteemed members of the *Future for Animals Society* protect animals from cruelty, exploitation and habitat loss far into the future by contributing to IFAW's strength and stability.



Mute swans rehabilitated in Estonia following an oil spill take steps to freedom. © IFAW / A. HAAS

## BEQUESTS

Including IFAW as a beneficiary in your will is an easy and effective way to protect animals long into the future. You can make your bequest for a specific sum, percentage or the residue of your estate. Of course, you should consult an attorney in drawing up a will, but the following language may be helpful:

"I give, devise, and bequeath to the International Fund for Animal Welfare, a nonprofit organization, located at 411 Main Street, Yarmouth Port, Massachusetts,

the sum of US\$\_\_\_\_\_ (or a designated percentage or the residue of my estate) to be used by IFAW to further its goal to assist and protect animals around the world."

IFAW gratefully thanks supporters who have already advised us of their intentions to protect animals through naming IFAW in their wills and honors them with membership in the esteemed *Future for Animals Society*. Members receive an annual newsletter and other special insider updates and alerts.

## CHARITABLE GIFT ANNUITIES

Investing in a charitable gift annuity at IFAW can be an ideal way to make a gift. A gift annuity pays guaranteed fixed income for life and gives you an immediate tax deduction — and a portion of the yearly income from the annuity is even tax-free. You can enjoy the benefits of a gift annuity if you are age 55 and over, with a minimum gift of US\$10,000. You may receive these annuity payments yourself, jointly or designate another person to receive them. And best of all, your gift will ultimately go to further the important work of IFAW by saving animals from both cruelty and extinction.

## Trust Plans

If you are looking for ways to protect your family and your money, a trust plan may provide the answer. Trusts are remarkably versatile and offer many opportunities to save taxes and broaden your estate plan.

Though there are various kinds of trusts, they share similar features. Your chosen trustee manages the trust assets (principal). The trust can then be set up to pay an income to your beneficiaries. When the trust ends, the remaining principal will be distributed to other beneficiaries chosen by you. You can establish a trust by an agreement during your lifetime (living trust) or through your will (a testamentary trust).

## Gifts of Real Estate

A gift of a house, farm, vacation home, office building, undeveloped land or other marketable real property is a wonderful way to help animals and provide you with substantial tax benefits. You may select a way to give that best suits your needs. For example, you may choose to receive a lifetime income or retain lifetime use of your property before donating it to IFAW for sale.

## Gifts of Life Insurance

If you own life insurance that is no longer needed to protect your family members or business, consider transferring ownership of the policy to IFAW and naming IFAW as a beneficiary. Whether or not all premiums are paid, you may be entitled to an income tax deduction (and possible estate tax deduction) for such a gift.

You can also name IFAW as the primary or contingent beneficiary of a new or existing policy without transferring ownership of the policy.

## Gifts of Retirement Plan Assets

Many individuals have accumulated funds in tax-deferred retirement accounts, which include profit-sharing plans, IRAs, 401(k)s and 403(b)s. Funds withdrawn from these accounts are usually taxed at both high income and estate tax rates. It is possible that at death, less than US\$30 of US\$100 in a retirement account will reach non-spouse beneficiaries. However, by donating retirement plan assets, donors avoid these taxes.



## Creating Connections for the Greater Good

Alexandra Denman and Ben Stein have been proud supporters of IFAW for five years and are very involved in the organization's work.

As a Board member, Ms. Denman believes that her most essential obligation is to ensure that IFAW uses its donors' contributions to achieve the best and widest possible results for animal

welfare. She is convinced that IFAW's work with national and local governments and other stakeholders in society sets the organization apart from other animal welfare organizations.

"IFAW does many things, but does each of them thoroughly, carefully. IFAW does not just go in to a crisis and after some quick fixes and publicity pull out and leave. IFAW works long-term with the particular community to permanently solve the animal welfare issues. And most importantly," Ms. Denman said, "community people run the IFAW offices.

"IFAW represents the connection between animals and people, promoting solutions that help create a better world for both. That's the only way to continue to make progress," she concluded.

Mr. Stein shares his wife's commitment. He commented, "I have an easy job in supporting IFAW; I simply put pen to paper and sign the check. The men and women of IFAW are on the front lines saving animals' lives, often putting their own lives at risk in dangerous situations. They are true heroes." LEFT PHOTO © IFAW / S. COOK

### Gifts of Appreciated Securities

Gifts of stocks to IFAW are an important way to help eliminate cruelty to animals and protect habitat around the world. The best way to make a stock gift is to have your broker transfer your stocks directly to IFAW. That way, you can realize the very best tax-savings: a charitable deduction for the full present fair market value, and no tax on the appreciation (capital gains).

If you would like to make a gift of stock, please notify IFAW's Resource Development Office toll-free at 1-888-251-0253. Then ask your broker to transfer your stock into the IFAW Brokerage Account: Merrill Lynch, Account **699-04122, DTC #5198**, 973 Route 132, Hyannis, MA 02601.

### Matching Gifts

Many employers match donations made by their employees. When you contribute to IFAW, please check with your company's Human Resources department to see if they will match your gift. A Matching Gift program may double or even triple your donation, helping animals in need twice as much.

### Special Ways to Make a Gift

All of IFAW's achievements have been made possible through the generosity of supporters like you who share our vision of a world where people and animals live in harmony, where no animal suffers from cruelty, exploitation or unethical trade. Whether you choose to give something back for the love and affection of a family pet or want to preserve the dignity and rightful place of the world's wildlife, we are grateful for your commitment to animals.

### NAMED PET FUND GIFTS

You can memorialize or honor a beloved pet through an *IFAW Pet Fund*. With a minimum gift of US\$5,000, IFAW will invest your donation to build an endowment for the future to support Community-Linked Animal Welfare (CLAW). The interest income generated will be used to help rescue, nurture and protect dogs and cats in impoverished communities around the world. It's a loving way to create a lasting tribute to a loyal companion and receive the tax benefits of making a charitable gift.

### TRIBUTE AND MEMORIAL GIFTS

Memorial and Tribute gifts are a wonderful way to honor special people and events. Whether your gift is made in memory of a loved one or in honor of a special occasion such as a wedding, birthday or holiday, your gift celebrates and shares a love for animals. Newlyweds may choose to direct gifts to IFAW instead of accepting wedding presents, managers may make a holiday gift to employees via separate contributions to IFAW and even marathon runners can collect pledges to IFAW before a race. Use your creativity along with your desire to protect animals and preserve habitat!

If you would like further information on any of these giving opportunities, please contact the IFAW Resource Development Office toll-free at 1-888-251-0253 or email [giving@ifaw.org](mailto:giving@ifaw.org). If you live outside the United States, please write to the office listed on the back cover for giving opportunities in your country.

IFAW is gaining a reputation as a leader in international oiled wildlife rehabilitation. © IFAW / J. HRUSA



## International Headquarters

411 Main Street  
Yarmouth Port, MA 02675

### Offices in:

#### AUSTRALIA

8-10 Belmore Street  
Surry Hills  
Sydney NSW 2010

#### BELGIUM

1 boulevard Charlemagne, Bte. 72  
B-1041 Brussels

#### CANADA

Suite 612  
1 Nicholas Street  
Ottawa, Ontario K1N 7B7

#### CHINA

Room 705, Golden Tower  
No. 1 Xibahe South Road  
Chaoyang District  
Beijing 100028

#### FRANCE

4 rue Edouard Mignot  
BP 1426  
51065 Reims Cedex

#### GERMANY

Kattrepelsbrücke 1  
D-20095 Hamburg

#### INDIA

IFAW/Wildlife Trust of India  
A-220, New Friends Colony  
New Delhi 110065

#### JAPAN

1-6-10-203 Saiwaicho  
HigashiKruma-shi  
Tokyo, 203-0052

#### KENYA

ACS Plaza, 2nd floor  
Lenana Road  
Post Office Box 25499  
00603 Nairobi

#### MEXICO

Tecoyotitla No. 274  
Col. Florida CP 01030  
Mexico City, DF

#### THE NETHERLANDS

Javastraat 56  
2585 AR The Hague

#### RUSSIA

Khlebny pereulok, 19-B  
121069 Moscow

#### SOUTH AFRICA

77 Church Street  
Cape Town 8000

#### UNITED KINGDOM

87-90 Albert Embankment  
London SE1 7UD

#### UNITED STATES OF AMERICA

1350 Connecticut Avenue NW  
Suite 1220  
Washington, DC 20036



**IFAW**

[www.ifaw.org](http://www.ifaw.org)

A Better World for Animals and People

