

40th Anniversary

ANNUAL REPORT | 1 JULY 2008 - 30 JUNE 2009

©IFAW/S. Cook

Our mission

is to improve the welfare of wild and domestic animals throughout the world by reducing commercial exploitation of animals, protecting wildlife habitats, and assisting animals in distress. IFAW seeks to motivate the public to prevent cruelty to animals and to promote animal welfare and conservation policies that advance the well-being of both animals and people.



©2010 IFAW - Printed in the USA on 100% post consumer recycled paper using soy-based inks - GarryGatesDesigns

IFAW Worldwide Board of Directors:

Thomas C. Ramey, Chair
Elliott G. Carr
Manilal Premchand Chandaria
Alexandra Denman
Margaret A. Kennedy
Christopher J. Matthews
David Metzler
Robert J. Monahan, Jr.
Thomas P. O'Neill III
Minou Palandjian
Kathleen Savesky
Victoria Stack

Brian Hutchinson, IFAW, UK Charity, Trustee
Michael Mainelli, IFAW, UK Charity, Trustee
Sean Rocks, IFAW, UK Charity, Trustee

Keely Brosnan, Honorary Board Member
Pierce Brosnan, Honorary Board Member
Leonardo DiCaprio, Honorary Board Member
Hal Prince, Honorary Board Member
Ben Stein, Honorary Board Member
Amber Valletta, Honorary Board Member
Goran Visnjic, Honorary Board Member

IFAW Executive Staff:

Frederick M. O'Regan, President and CEO
Melanie B. Powers, Chief Financial Officer
Azzedine T. Downes, Executive Vice President for International Operations
Kevin Shields, Vice President of Programs
Kevin McGinnis, Director of Human Resources

It's been 40 years

since a small group of concerned citizens banded together to stop Canada's massive and brutal seal hunt.


We've since grown into one of the leading international organizations protecting animals around the globe. Now supported by more than 1.2 million people, we work passionately to save animals in crisis.

We protect dogs and cats from cruelty, elephants and other wildlife threatened by poaching and disasters, and whales and seals in danger from inhumane hunts.

Our approach over the years has been as varied as the species we protect, but our mission has remained constant and simple: to create a better world for animals.

Contents

- 4 Compassion in Action**
A letter from our CEO and Board Chair
- 5 Program Highlights**
40 years of victories for animals
- 21 Financial Overview**
- 25 Our Donors**
Ways to Give



We dedicate this annual report to our supporters and to the courageous men and women working in the field and in the halls of government to create a more compassionate world. We hope you take pride in all that we have accomplished together for animals.

©IFAW/S. Cook

Compassion in Action

This year, as IFAW marks its 40th anniversary, we pay tribute to the remarkable commitment of our supporters, who have made possible our work to protect animals and promote a more compassionate world.

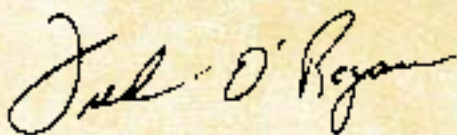
Despite challenging economic times, we can all be proud of the victories we are achieving for animals in crisis around the world. In the past year, we rescued thousands of animals in peril from bushfires, hurricanes, floods, earthquakes, and other disasters. We moved an entire herd of elephants out of harm's way in Malawi, made the world's oceans safer for whales, and helped to stem the trade in wildlife that is devastating species from Asia to Africa.

In our founding campaign to save seals from commercial hunting, we achieved a historic trade ban in the European Union and a new ban on hunting newborn seal pups in Russia. These victories will save hundreds of thousands of harp seals on the ice floes of Eastern Canada and in the White Sea.

We rescued penguin chicks, orphaned bears, elephant calves, young rhinos, snow leopard cubs, and many other animals, and gave them a second chance for life in the wild. In some of the world's neediest communities, our vets provided hands-on care for some 50,000 cats and dogs at risk of cruelty and neglect.

We applaud you, our supporters, for these successes. We take our role as stewards of your funds very seriously and we are committed to accountability in all that we do to safeguard animals worldwide.

Thank you for your steadfast support,



Frederick M. O'Regan
President and Chief Executive Officer



Thomas C. Ramey
Chair, IFAW Board of Directors

No market for cruelty

We're close to ending the annual slaughter of baby harp seals once and for all. At least 30 countries now ban the sale of seal products. Markets for seal fur are collapsing around the world. In 2009, some 200,000 seal pups were spared a premature death on the Canadian ice due to lack of demand.

Europe takes a stand

The European Union banned the importation of all seal products, cutting off another key market for seal fur. Also, for the first time ever, a Canadian politician introduced legislation to end the seal hunt. ▼

35,000 seal pups saved

In March, Russia banned hunters from killing baby seals, saving more than 35,000 harp seals in the White Sea each year. ▶



©IFAW/S. Cook



©IFAW/R. Vogel

IFAW Victories for Animals **1969**

IFAW founded in New Brunswick, Canada. Exposes shocking hunt of baby seals to worldwide outrage.



© IFAWS Cook

1970



© Nikita Ovsyankov

“Operation Bear-Lift” relocates 80 polar bears away from towns and villages.

1972



© IFAWS Cook

U.S. Congress passes Marine Mammal Protection Act, which bans importation of seal products. A year later the Endangered Species Act passes.

1983



© IFAWS Cook

Europe bans importation of “whitecoat” Harp seal products, saving more than a million newborn seals from slaughter over the next 10 years.



©IFAW/R. Sobol

In Uganda, IFAW steps in to save elephants, hippos, and other wildlife from poachers in Queen Elizabeth National Park. The elephant population rebounds from 150 to 2,400 and is now considered one of the finest in Uganda.

1989



©IFAW/D. Willetts

IFAW helps win crucial ban on selling elephant ivory, saving thousands of elephants from poaching. The ban proves temporary as Japan and China manage to reopen "limited" trade.

It's up to us

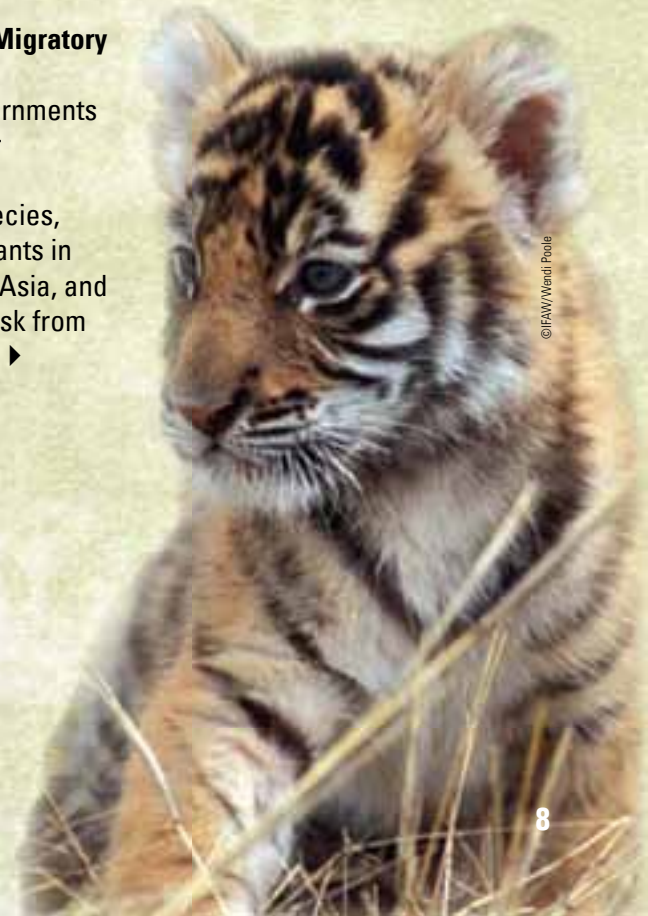
In 1900, there were more than 10 million elephants worldwide. In 1959, 5 million. By 1979, less than 1.4 million. Today, fewer than 650,000. The numbers make it clear: the survival of the world's largest land animal is at stake. We must reverse this alarming trend. Ending ivory trade will save thousands of elephants from poachers each year. Conserving elephant habitat will help stop lethal conflict between elephants and people.

◀ Malawi's jumbo move

In June 2009, we moved an entire herd of endangered African elephants out of harm's way in Malawi. Dozens of the elephants had been maimed by local villagers protecting their families and crops. Working with the Malawi government, 83 elephants, including this calf and its mother, were moved 150 miles to a secure, free-roaming reserve.

Convention on Migratory Species

Eighty-five governments pledged greater protection for endangered species, including elephants in Africa, tigers in Asia, and polar bears at risk from climate change. ▶



©IFAW/Wendi Poole



©IFAW/C. Lacey

Seminal acoustic research on IFAW's "Song of the Whale" helped demonstrate that Japan does not have to kill whales in the name of "science."

1990s

Don't buy it

Each piece of ivory represents a dead elephant. Illegal trade in wildlife is pushing elephants, tigers, turtles, bears, and many other species toward the brink of extinction. We're working with policy-makers and consumers – from corporate offices to the front lines of enforcement – to tackle this deadly black market.

Wildlife in cyberspace ▶

In 2009, we prompted eBay, the world's largest Internet auction site, to ban the sale of ivory. Our investigation found ivory accounted for 73% of the online trade in wildlife products. In Asia, China's largest business-to-business website, Taobao, banned the buying and selling of shark fins.

Thin green line

Our wildlife enforcement training led to the rescue of more than 1,000 wild animals smuggled from Venezuela to Trinidad and Tobago. In Africa, a four-month operation netted a ton of ivory items and 57 suspects. ▼



©IFAW/Zoological Society of Trinidad and Tobago



©IFAW/DaWitt

IFAW Victories for Animals 1991

IFAW helps block a proposed European Community Directive that would have vastly increased cosmetic testing on animals.



© IFAW/D. Williets

1991



© IFAW

South Africa bans seal hunting, sparing 30,000 Cape fur seal pups and adults from slaughter.

1992



© IFAW/L. Cabrero

IFAW project brings veterinary care to pets in the poor areas of Johannesburg, which will help more than 300,000 cats and dogs over the next 18 years.

1994



© IFAW/A. Friedlander

IFAW spearheads international efforts to establish the Southern Ocean marine sanctuary, protecting 90% of the world's whales.



©IFAW/J. Levenson

A project to rescue stranded whales and dolphins is founded on Cape Cod, a stranding hot spot. This IFAW project is staffed 24/7 and attends to hundreds of reported strandings each year.

2000



©Planet Earth Pictures/Mark Conlin

The Mexican government and Mitsubishi Corporation are stopped from building the world's largest salt factory in Laguna San Ignacio, the last undisturbed nursery for critically endangered gray whales.

2000



©IFAW/T. Samsen

A freighter sinks off the South African coast, covering 38,000 penguins in oil. IFAW leads the largest oiled bird rehabilitation effort ever. More than 90% of the birds are successfully released back to the wild.

©IFAW/J. Levenson



Defense won't rest

Whales need us. From pollution to climate change, these magnificent and intelligent creatures face more threats than ever. The worst, and most avoidable, come from Japan, Norway, and Iceland, who continue to hunt whales. We won't rest until they stop. We're also turning down underwater noise and stepping up measures to help whales navigate dangerous ocean highways full of ship traffic and fishing gear.

◀ A safer migration

In 2009, we secured new regulations in the United States to better protect whales from being struck by ships. We also exposed the dirty secret that Japan sells meat from the hundreds of whales it kills each year for "science."

Secure feeding grounds

We convinced the Russian government to cancel seismic testing in the only known feeding area of Western Pacific gray whales, the world's most endangered whales. ▼

2000s



IFAW expands companion animal projects worldwide – from Northern Canada to Indonesia – to provide hands-on veterinary care in impoverished communities.

©IFAW



© IFAW/W. Blaisch

Shahtoosh weaving banned in India, protecting endangered Tibetan antelopes from being killed for wool to make luxurious shawls.

2003



© IFAW/Stewart Cook

IFAW rescues 24 tigers from a backyard zoo in New Jersey. Publicity helps pass the Captive Wildlife Safety Act, making it harder to buy and sell exotic animals.

2004



© IFAW

After 16-year IFAW campaign, the UK bans the cruel sport of hunting foxes, deer, and hares with dogs.

When needed most

Earthquakes. Fires. Floods.
Tornadoes. Tsunamis. Hurricanes.
Oil spills. When disasters strike,
animals are left vulnerable. We
mobilize. Our dedicated emergency
relief teams have saved more than
100,000 animals in peril all around
the world.

◀ From the ashes

During the worst wildfires in Australia's history, this baby koala was treated for burns, dehydration, and smoke inhalation. In all, we rescued more than 140 burned animals – horses, dogs, goats, wombats, wallabies, and kangaroos – from the blackened bush.

Emergency relief delivers

Last year, we provided food and veterinary care for 7,500 animals after flooding in Bihar, India. We airlifted 373 penguins to safety in Brazil. Our emergency response teams rescued hundreds of dogs and other animals after an earthquake in L'Aquila, Italy, and following Hurricanes Gustav and Ike in the United States. ▼

Born to be wild

Hundreds of orphaned and injured wild animals are rescued, hand-reared, and released back to the wild each year by our pioneering wildlife rehabilitation centers. We care for bear cubs in Russia, raptors in China, grizzlies in Canada, and an array of endangered animals in India, including elephants, rhinos, tigers, and bears.

Caring for orphans ▶

In 2009, a record 320 wild animals were rescued by our rehabilitation center in India – the only one of its kind in the country. Two rare clouded leopard cubs, just one month old when rescued, were among the orphaned animals under our care.

Rescue, rehab, release

This year, our Raptor Rescue Center in Beijing provided critical care for more than 300 injured animals, releasing more than 50% back into the wild. We also led the first officially sanctioned grizzly bear release in Canada, strengthening the case for future rescues. ▼



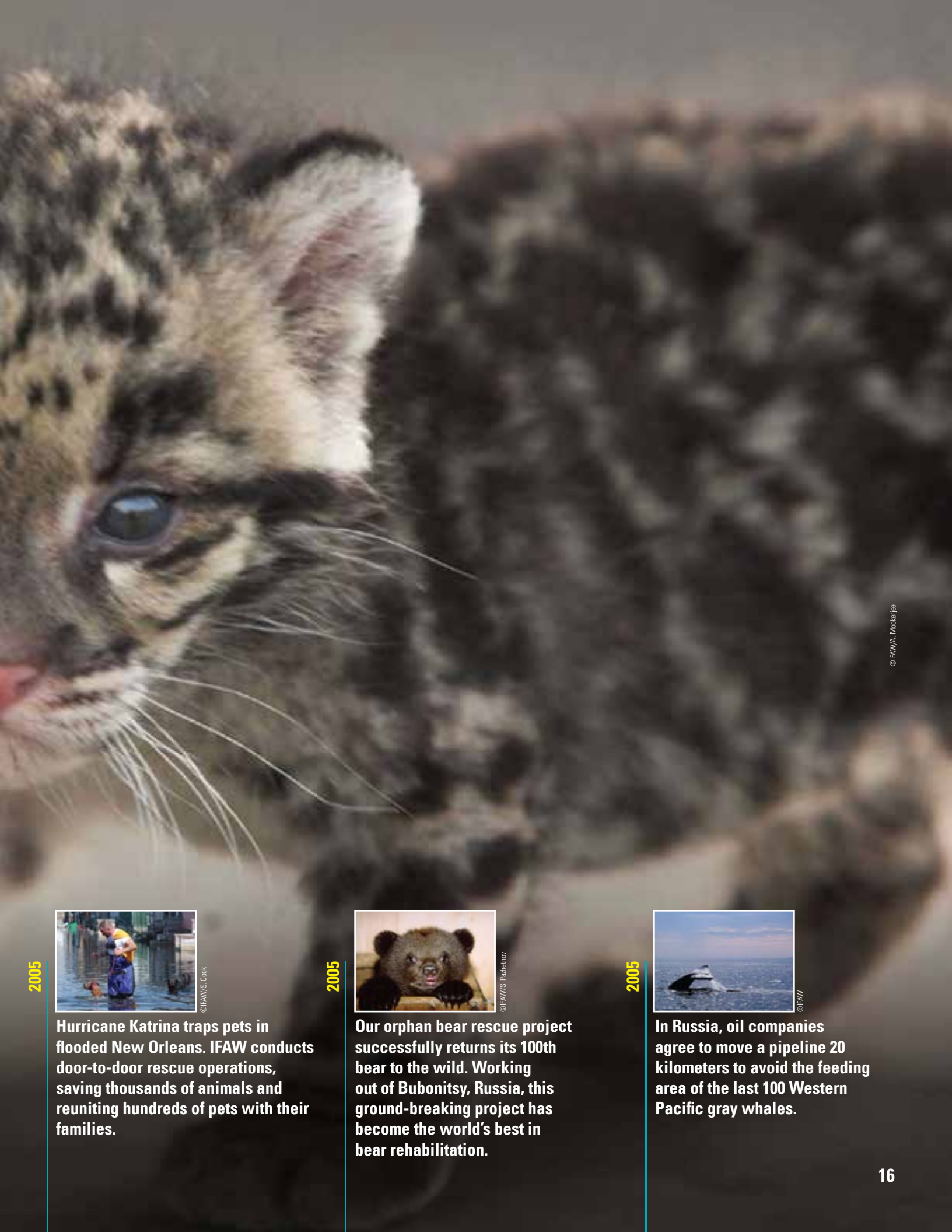
© IFAWM, Jiguo



© IFAWI, Ahmed

IFAW Victories for Animals 2004

Tsunamis devastate coastal communities throughout southern Asia. IFAW dispenses vaccinations, animal feed, and emergency assistance for wildlife, pets, and farm animals.



© IFAW/A. Mookerjee

2005



© IFAW/S. Cook

Hurricane Katrina traps pets in flooded New Orleans. IFAW conducts door-to-door rescue operations, saving thousands of animals and reuniting hundreds of pets with their families.

2005



© IFAW/S. Pankretov

Our orphan bear rescue project successfully returns its 100th bear to the wild. Working out of Bubonitsy, Russia, this ground-breaking project has become the world's best in bear rehabilitation.

2005



© IFAW

In Russia, oil companies agree to move a pipeline 20 kilometers to avoid the feeding area of the last 100 Western Pacific gray whales.



© IFAW

Greater one-horned rhino and orphaned Asian elephant calf – rescued and hand-reared by IFAW – return to the wild for the first time in India.

2006-7



© IFAW/WIT/A. Mookerjee

Rehabilitated Asiatic black bears return to their natural habitat for the first time in India.

2007



© IFAW/D. Galimski

Kenya's Meru National Park is awarded world-class conservation status after IFAW's five-year project helps rebuild the park's entire ecosystem.

Pets are family

This feeling about cats and dogs holds true in many parts of the world, which is why we bring free veterinary care to places where it doesn't exist, straight to people who can't afford it.

◀ A second chance

Rescued from a garbage dump in Cozumel, Mexico, this puppy is just one of 48,000 dogs and cats cared for by our vets in impoverished communities around the world in 2009.

A kinder world

We work hand-in-hand with local communities to end animal cruelty. In 2009, our work in Bali, Indonesia, persuaded the government to cancel a dog cull. In China, we helped draft a bill to prevent animal cruelty. If approved, it will become China's first animal welfare legislation, protecting animals such as these cats, rescued from a market in Tianjin where they were being sold for food. ▼



© IFAW/L. Gomes

IFAW purchases vital migration corridor in India to protect more than 1,000 endangered Asian elephants.



© IFAW/L. Qin

Our best hope

Children are the key to a better future for animals. IFAW's education programs empower young people and their communities to take positive action for animals. These programs address the root causes of many pressing animal welfare and conservation challenges.

Our shared world

We help local communities in Africa learn to live in harmony with the animals who share our habitat. We teach children, like this young girl in Northern Canada, to care for their pets. Aboard IFAW's floating classrooms, children in coastal communities learn to respect and appreciate whales and other endangered marine wildlife. ▼

Youth in action ▶

A record 7,000,000 young people cleaned up coastlines and parks, convinced their parents to stop using plastic bags, joined us at special events in 16 countries, and sent us inspiring artwork, including this original drawing by Jacquelyn, age 12, from the United States.





© IFAW/Fred Drott

Belgium becomes the first European Union country to ban the importation of all seal products.

2008



© IFAW/P. Vandenwacker

Reducing our own carbon footprint, IFAW moves to a new "green" headquarters, a "Gold" LEED certified building.

2008



© IFAW/GUO Tielu

When a devastating earthquake hits China, IFAW provides six tons of animal food and supplies for animals and their owners.

Financial overview

In the midst of a financial crisis that touched people and industries around the world, IFAW supporters ensured animal welfare needs were not forgotten.

We heard from donors who had lost jobs, lost retirement income, lost value in their homes, but who expressed the wish that they could give more. Inspired by that commitment,

IFAW management reduced costs throughout the organization and aligned revenues and expenses for fiscal year 2010 and forward. IFAW moved investments into increasingly conservative funds to ensure that cash and capital were secure for animal welfare needs.

The costs and losses associated with this restructuring are responsible for the deficit in the fiscal year 2009 statements. These

losses taken in fiscal year 2009 have resulted in significantly reduced costs worldwide going into fiscal year 2010.

The proactive financial planning measures we have taken assure that IFAW's funding reserves are protected, so in even the most difficult times, IFAW will be there to protect the world's most vulnerable animals.

International Fund for Animal Welfare

Combined Financial Statements (Unaudited*)

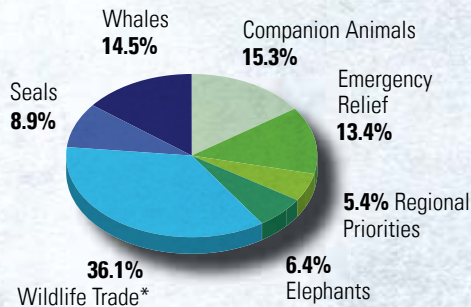
For the Years Ended 30 June 2009 and 2008

In Thousands US Dollars

	2009	2008
Assets:		
Cash and cash equivalents	\$12,500	\$21,037
Prepaid expenses and other current assets	9,850	10,029
Fixed assets, net	27,612	29,734
Investments	27,239	32,807
Total assets	\$77,201	\$ 93,607
Liabilities:		
Accounts payable and other current liabilities	9,874	12,100
Notes payable	14,633	14,916
Total liabilities	24,507	20,016
Net assets	52,694	66,591
Total liabilities and net assets	\$77,201	\$93,607
Public support and revenue		
Supporter contributions	\$86,876	\$101,905
Other income	(5,488)	(2,431)
Total public support and revenue	81,388	99,474
Expenses:		
Program and operating expenses	92,680	108,851
Total expenses	92,680	108,851
Excess (deficit) of public support and revenue over expenses	\$(11,292)	\$(9,377)

*Financial statements for each of the IFAW entities are prepared in accordance with local country accounting principles and are audited separately. The combined financial statements are prepared on a basis that approximates accounting principles used in the United States of America.

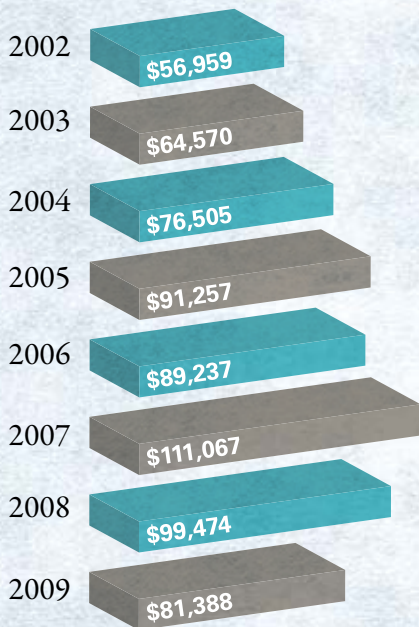
Direct Expenses by Strategic Priority Area
Fiscal Year 2009



*The investment in IFAW's wildlife trade program, representing 36% of this chart, includes more than \$4 million associated with in-kind gifts for those particular programs.

Financial History

Total Income in Thousands USD



In fiscal year 2007, IFAW received a one-time bequest of \$10 million, which creates the impression of a larger difference in revenues between fiscal years 2007 and 2008 than actually occurred. Adjusted for that very special gift, revenue was essentially flat. In fiscal year 2009, the downturn was strategic. The organization made significant cuts in fundraising expenses that yielded reductions in fundraising income but the expense cuts were greater than the revenue decline. IFAW has managed reserve funds effectively and is prepared in "down" years to use portions of these funds strategically for animals.

**International Fund for Animal Welfare
Functional Allocation of Expenses***

Entity	Location	Year Ended 30 June 2009		Year Ended 30 June 2008	
		Program & Institutional Costs	Fundraising Costs	Program & Institutional Costs	Fundraising Costs
International Fund for Animal Welfare, Inc.	United States	83.5%	16.5%	89.0%	11.0%
International Fund for Animal Welfare	United Kingdom	71.0%	29.0%	73.4%	26.6%
IFAW Charitable Trust	United Kingdom	85.6%	14.4%	82.6%	17.4%
International Fund for Animal Welfare Inc./ Fonds international pour la protection des animaux Inc	Canada	85.6%	14.4%	81.4%	18.6%
Stichting IFAW - Internationaal Dierenfonds (Nederland)	The Netherlands	82.7%	17.3%	81.5%	18.5%
IFAW Internationaler Tierschutz-Fonds gGmbH	Germany	91.4%	8.6%	86.0%	14.0%
International Fund for Animal Welfare (France)	France	87.0%	13.0%	85.2%	14.8%
International Fund for Animal Welfare (Australia) Pty Limited	Australia	87.0%	13.0%	87.7%	12.3%
International Fund for Animal Welfare (association incorporated under section 21)	South Africa	90.6%	9.4%	89.1%	10.9%

*Functional allocation computations are made based on financial results that are prepared in accordance with local country generally accepted accounting principles.

In addition to support from 1.2 million individual donors, IFAW received wide support from corporate and commercial partnerships, particularly providing donations of goods and services which made a critical difference in a resource constrained environment. Program percentages stayed high, and IFAW maintained its performance standards as one of the 250 Better Business Bureau gold seal recipients in the US and as a registered charity in good standing with the Charities Commission in the UK.



It's not our money

That's the way we look at it. It's given to us generously and freely by retired nurses in the United Kingdom, by engineers in Germany, and by college students in the United States. The money comes with a promise and an obligation. We put your compassion into action helping as many animals as possible.



Greater good

When disasters strike or animals are in peril, our rescue teams rush in to provide hands-on relief for animals. The Animal Rescue Site springs into action as well, raising the funds we need to help where animals need us most. "By partnering with IFAW, we give our online shoppers a simple but meaningful way to contribute directly to work that alleviates animal suffering," said Animal Rescue Site founder Greg Hesterberg.

The Animal Rescue Site, through its charity partner, GreaterGood.org, has helped us save animals in the wake of bushfires in Australia, earthquakes in China, and floods in the US. They support hands-on care for orphan bears in Russia and elephants in India. They also fund veterinary care for cats and dogs in impoverished settlements in Johannesburg, South Africa, back our work to safeguard African wildlife, and rescue stranded whales on Cape Cod.





Donors

Leadership Giving Circle

IFAW gratefully recognizes our leadership gift supporters, donors of \$1,000 or more, who partner with us to stand up for animals around the globe.

Chairman

US \$100,000 and above

The Animal Rescue Site
Anonymous (1)
The Geraldine Dodge Foundation
GreaterGood Network
Leonard X. Bosack & Bette M. Kruger Charitable Foundation
National Oceanic and Atmospheric Administration Prescott Grant
Pacific Life Foundation
U.S. Fish and Wildlife Service's Wildlife Without Borders Program
Mr. William N. Vaughan

President

US \$50,000 to US \$99,999

Anonymous (3)
National Oceanic and Atmospheric Administration
Wallace Genetic Foundation

Ambassador

US \$25,000 to US \$49,999

Leonardo DiCaprio Charitable Foundation
Disney Wildlife Conservation Fund
Samuel E. & Hilda Duff Trust
Dr. Phyllis A. Huene
A Kinder World Foundation
LUSH Fresh Handmade Cosmetics
The Paul Revere Society
Plum Foundation
Save the Tiger Fund
Kenneth A. Scott Charitable Trust
Stephen A. & Laura Scully
The David P. Tenberg Charitable Foundation

Founder

US \$10,000 to US \$24,999

Animal Welfare Trust
Anonymous (3)
Asian Tigers K.C. DAT
The Sandra Atlas Bass & Edythe Sol Fund
Elinor Patterson Baker Trust
The Barrett Family Foundation
Ms. Peggy J. Barwick
Cape Cod Five Cents Savings Bank Charitable Trust
Cape Light Compact
Ms. Suzanne Costas
Davis Conservation Foundation
Fashion Accessories Benefit Ball
Ferree Foundation

Foundation M

Mr. Michael C. Graham
Edith H. Hahn Animal & Wildlife Preservation Fund
The Hasluck Charitable Trust
Ms. Mei J. Hou
Mevrouw E.J. Kindermann
Ms. Patricia F. Kulha
Frau Maria Lackinger
Frau Ute Leicht
The Lemmon Foundation
Mrs. Joyce Manning
Alexandra Martinez
Wendy P. McCaw Foundation
Mr. & Mrs. David Metzler
Mr. B. M. Nye
Peter & Minou Palandjian
The Pegasus Foundation
Mr. & Mrs. Robert T. Perkins
Mr. Thomas C. Ramey
Mrs. J. Ramsey
Mrs. Frances Rose
RPH-Promotor Stiftung
Mr. Cyrus W. Spurlino
Ben Stein & Alexandra Denman
Donald & Delma Taylor
The Patronax Foundation
Mrs. Lois W. Vaughan
Vermont Teddy Bear Company
Wildlife Conservation Network

Partner

US \$5,000 to US \$9,999

Anonymous (2)
Bafflin Foundation
Mrs. Joan M. Burley
Mr. Charles F. Colao
Creative Yoko Co., Ltd
Mrs. Barbara Fried
Ms. Helga Fuller

Mr. Thomas M. Futter
Chad & Anne Gifford
Jessica Gifford
Greater Milwaukee Foundation's Arthur T. Anderson Family Fund
Miss D. Griffiths (Deceased)
Maureen Hackett
Miss G. Hewitt
The Estate of Dr. Lucie Tuch Homburger
Mr. & Mrs. Lloyd Kapp
Miss Belina L. Lazzar
Ms. Sandy Lerner
Mr. Michael J. Lindley
The Living Others
Ms. Mary Ann E. Mahoney
Emil Maschner
Dr. Lindsey A. Matheson
Christopher & Kathleen Matthews
Frau Marianne Meyer
National Fish and Wildlife Foundation
National Oceanic and Atmospheric Administration Prescott Grant
The Oak Foundation USA
Park Foundation
Ms. Lacy W. Raspberry
SeaWorld & Busch Gardens Conservation Fund
Frau Fridl Specht
Ms. Cathy H. Spencer
Ms. Victoria Stack
Stiftung für das Recht und die Würde der Tiere
Judi & Howard Strauss Foundation
David & Elizabeth Thede
Charlize Theron
Mrs. Rosamond G. Walbert
Mr. Edwin C. Winder

Patron

US \$2,500 to US \$4,999

Anonymous (4)
Adelaide Arthurs
Ms. Anne C. Barasch
Herr Helmut Baurmann
Ms. Linda L. Beggs
Bert-Fanselau-Stiftung
Mr. & Mrs. Richard Bishop
Miss N. Brien
Mrs. Lois Brounell
R. Bugg (Forwarding) Ltd
Bürgerstiftung Weserbergland - Eheleute Pilkuhn

BW Underwriting Services Inc
Mrs. M. Castleton
Ms. Hope A. Copeland
Dr. A. Couch
Courtney & Company
Ms. Rebecca Crigler & Mr. William Kamer
W. David & Elke Dary
Defenders of Wildlife
Mrs. S. Diederichs
Bert-Fanselau-Stiftung
Frau Petra Frank-Diebels
Edward Gorey Charitable Trust
Gebr. Götz GmbH & Co. KG
The Michael C. Graham Foundation
Miss J. R. Griffin Charitable Trust
Malcolm W. & Lorrain Hall
Ms. Heather R. Hallack
Miss S Harper-Holmes
Dr. Julian Harrold & Dr Anna Harrold
The Harry Schwartz Foundation
Martin & Linda Haspel
Mr. & Mrs. William F. Heyd
Frau Franziska Huber
Mrs. S. Hunkin
Karl und Karola Glaser Stiftung
Ms. Mary C. Kennedy
Ms. Jeanie Kilgour
Kinnickinnic Realty Co.
Mr. & Mrs. John D. Lamb
Large Pop Merchandising
Mr. & Mrs. Kenneth Levine
Mrs. Shirley Meitz
Lauren Melkus
Mrs. Jo Melville
The Miller Foundation
Millers-Wolf Charitable Trust
Mostware Automatisering
Mr. H. Mott
Madolyn Potvin
Mrs. A. Read
Ms. Alice K. Robinson
Miss E M Sage Charitable Trust
Mr. & Mrs. Peter M. Schwab
Mr. Anant Shah
Dr. Sarjit K. Siddoo
Singing Field Foundation
Sonangol Limited
The Spear Charitable Trust
Mr. & Mrs. Robert J. Sullivan
Mrs. K Theodoli
Treuhänderschaft Pilkuhn

Ways to Give



@WTT/W. Menon



@IFAW/D. Willerts



@IFAW/R. Sobol

Join IFAW in leading the way to protect animals worldwide. Your leadership gift of \$1,000 puts you on the front lines with other supporters who make possible the fight to end the commercial seal hunt in Canada, stand between poachers and elephants, bring veterinary care to dogs and cats in impoverished communities, and rescue animals in crisis situations.

Tropical Seas, Inc.
Tiberiu & Elisabeth Turi
Mr. James B. Vandergrift
Mr. J. Webster
Nevin Williams
Ms. Marion Zola & Mr. Sam Urcis

Friend

US \$1,000 to US \$2,499

Mrs. Julia Abate
Abbey Charitable Trust
Mrs. Ellen Adam
Ms. Lawana Addiego
Mr. Richard Adelaar
Sylvia Aitken Charitable Trust
John & R. Diane Alahouzos
Dorothea Alpert
American Foundation Corporation
Anonymous (20)
Anthem Visual Effects Inc.
Ms. Sarah M. Arnell
Sheila Aronow
Ayudar Foundation
Marlow & Barbara Baar
Frau Heidi Annette Bähren
Judy Becker
Ms. Maria J. Bel
Miss E. C. Bickell
Mr. Alan E. Boles, Jr.
Julie Bonanno Trust
Mrs. M. Brett
Margarete-Breuer-Stiftung
Brodsky Charitable Foundation Trust
Ms. Maureen C. Brosnan
Miss Mary M. Brownjohn
Mr. & Mrs. David Bundy
Frau Anneliese Burian
Mrs. Jane Cadbury
Mr. Mark Callahan
Ms. Maria S. Cantwell
Melisa Chandler
Mr. & Mrs. Travis Cheney
Mr. Lee R. Clifford
Miss Angela Cochrane
Mrs. Doreen Collins
CompSec, Inc.
Mr. Brant Cooper
Mr. John R. Corrin
Ms. Suzanne Cox
Mrs. Katharine B. Crocker
Mr. E. Cullum
Mr. Frank Darabont
Darren Star & Dennis Erdman Animal
Welfare Fund
Mr. & Mrs. Shiva Das
National Geographic Channel
Ms. Karen De Benedictis
De Nationale Wensbon b.v.
Delves Charitable Trust
Frau Gudrun Diedert
Mr. & Mrs. Giosue J. DiMassa
The Dobranski Foundation
Mrs. P Dunkin
Mr. David S. Dunlop
Mrs. Margaret E. Dunn
John B. Durham
Mrs. S. L. Edwards

Ann English
Karl G. Estes Foundation
Mr. William R. Eubanks
Mr. Owen Evans
Dicom Express
G. F. Eyre Charitable Trust
Mr. D. A. Farrington
Alice Fisher
J. M. Fitzherbert
Ms. Patricia Fuchs-Wenzlau
Mrs. Lou Fuqua
Miss Stephanie Furmanowie
Claudia Gaglione
Linda Gallagher
Karl und Karola Glaser Stiftung
Ms. Adelaide P. Gomer
Mr. P. Gomm
Ms. Linda M. Gordon &
Mr. Donald W. Barshinger
Mrs. Susan L. Grau
Mrs. Edna M. Greenfield
Mr. Stanley Greenman &
Ms. Tamara Greenman
Ernest Greenwood (Deceased)
Henry H. & Laurel K. Greer
Foundation
J. Grimley
Herr Alfred Gropp
Mr. Dean Hampton
Ms. Sandra Hatfield
Ms. Betty Haugh
Mrs. Deborah I. Haynes
Mrs. J. J. Hazelton
Patricia Heaney
Patricia Ann Herbert Charitable Trust
Caroline Agnes Joan Hervey Trust
Miss Hetherington
Janine Hicks
Mr. C. Hill
Julia Kelly Hoey
Glenn & Diana Hofer
Ms. Marilyn J. Hogan
Mrs. Susan Horne (Deceased)
Mr. & Mrs. Ted Howells
The Rhode Island Foundation
Inland Sea Windsurf Co.
Melanie Isbister
Herr Karl-Heinz Jahn
John Snow, Inc.
Mrs. I Jones
Vicky Myers-Kaseff & Gary Kaseff
Mr. Kevin Kelly
Alexander Kendziorski
Ms. Margaret A. Kennedy
Ms. Phyllis I. Kerdasha
Mr. & Mrs. B. King
Mr. & Mrs. Frank Kirk

Hans & Ruth Koch
Ms. Susan Labandibar
Beth Lamont
Leonard Lan
Mr. & Mrs. Peter Laskas
Frau Arina Lauffs
Miss Tuan Lee
John Leone
Mrs. G. Lepies
Mrs. Judith E. Levy
Ms. Kit Lilly &
Mr. Tony Betancourt
Mr. J. K. Lyon
Marquis George MacDonald
Foundation, Inc.
Les Marguerites Trust
Frau Dolly I. Martin
Frau Waltraud Mäule
Ms. Gertrude Maxwell
Ms. Bethany McCloy
Mrs. Patsy McIntyre
Herr Gustav Meier
Judith S. Merrill
Mr. John L. Metro
Mrs. J. Miles
Mrs. B. Miller
Mr. & Mrs. Robert Moore
Ms. Donna B. Moskow
Ms. Konny Murray & Mr. David
Buckingham
Frau Ursula Nienhagen
Novica United Inc.
Angelica Offenbecher
Miss M. Oldfield
Omroepvereniging PIEP
Mr. & Mrs. Raymond Osborne
Miss Menna Owen
Ms. Pamela M. Pearson
Frau Brigitte Peiniger
Ms. Kim Perloff
Scott Phillips
Ms. Nancy Porter
Frau Christina Primas
Miss R. M. Quinn
Dhr. A. N. K. Quist
Matthew Quitmeyer
Murli Rao
Ms. Loran Recchia
Mr. Barry Reisler
R. Robinson
Dr. Walter M. Rosen
Mrs. Clare Rosenfield
D. Rubino
Miss Emma Ryan
Mr. Wayne S. Safka
Scott A. & Angel Sandstrom
Mr. Morton S. Schmorleitz

Herr & Frau Rolf Schopf
Ms. Elizabeth B. Simon
Mary Slane
Mrs. Carol A. Slipetz
Jennifer Smith
Mrs. Lesly S. Smith
Sarah Sonnier
Mrs. H Spear
Frau Lotte Spohn-Freitag
Frau Doris Steisslinger
Lorraine E. Stepenske
Stichting AAP
Ms. Carol A. Sweeney
Ms. Paula M. Szortyka
Ms. Laurreta Tagli
Mrs. Margaretta Taylor
Carrie Teske
Andrea & Greg Thomajan
Mrs. Sarah A. Thompson
Penny Thompson
Mrs. M. Tomlin
Ms. Jean Tournoff
Mrs. Susan V. Turner
Miss S. Turner
Ms. Elinore Tushner
Albert Gleaves &
Deadria W. Van Metre
Miss B. Varley
Mr. Jaime Vigil
Miss Marion V. Vincent
Mrs. J. B. Von Bothmer
Dr. Carrie L. Walters
Phyllis Waters
Mrs. D. Waugh
Mr. James C. Waugh
Herr Johannes Weller
Mr. & Mrs. Edward Wenger
Mr. Edward R. Wernick
Mr. W. West
Mr. H. Whittington
Sherri Williamson
The A & R Woolf Charitable Trust
Ms. Karen M. Wruk
Mr. & Mrs. Richard J. Yackey
Mr. Robert Zoellick &
Ms. Sherry L. Ferguson
Frau Dr. Renate Zückmantel
Mr. & Mrs. Richard Zukin



Donors

Pet Fund

IFAW thanks our donors who have established funds to honor their best friends and help dogs and cats in need.

Anonymous,
The Toni Fund

Anonymous,
The Mephisto & Nike Fund

Linda L. Beggs, The Freddy Fund

Sandy C. Bell,
The Zeppelin & Boz and Kezzy & Buddy Boy and Poochie & Tangey and Tuxey & Fat Buddy and Joby & Baby Funds

M. Bonham-Carter, The Patch Fund
Linda J. Campbell, The Lacey Fund

J.M. Cartwright, The Perry Fund

Ray & Noreen Castellani,
The Castellani Dog Family Fund

G.E. Cook, The Suki Fund

Mrs. Diane de la Poore,
Lucy & Marley Fund

G. Ellis, The Minnie Fund

Miss M.A. Thunder Fairfield,
The Leila Fund

Jeffrey G. Fischer, The Homer Fund
Kurt & Judith Fish, The Bucky Fund

Mrs. J. Lawrence Frank,
The Rosie the Cat Fund

Fred & Barbara Fried,
The Buster Fund

Karen L. Gibson,
The Tazman and Astan Fund

Suzanne L. Goodson, The Fiona Fund

G.R. Gratton,
The Castor & Pollox Fund

Gloria Gray, The Sally Fund

C.G.R. Green, The Smartie Fund

Abby Ann Griscom, The Vinnie Fund

Nina Carolyn Gut,

The Brandy & Sherrie Fund
Jan Hayden, The Marshmallow Fund
Michael & Deborah Haynes,
The Pixie, Pumpkin, Hobie Cat, Simon,
Muppet and Mama Fund

Hans J. Heine, The Kleinhund Fund
Ankh Hemminga, The Joeri Fund
Dr. Phyllis A. Huene, The Gigi Fund

Richard Koerner,
The Tibby & Buster Fund
Christopher & Traci Morris,
The Ginger, Molson, Goldy & Wynton
Fund

Laura M. Ost, The Ghandi Fund
William Payden, The Neely Fund
Don & Shirley Pence, The Buffy Fund
Les Pioch,
The Ozzie, Riley, Ziggy & Bubba Fund

Hal & Judy Prince,
The Rosie/Emily Fund

Robin S. Rawls, The Missy Lou Fund
and The Kitty Rye Fund

Carol H. Ray, The Buddy Fund

Deborah Rosenblum,
Fund of Our Friends

Jeff & Sharon Rosenblum,
Fund of Our Friends

Wendy Rosenblum,
Fund of Our Friends

Alison B. Rubin,
The Cinnamon Spice Fund

Mary E. Shamrock, The Patch Fund
Dr. Sarjit K. Sidoo, The Hari Fund

Sara A. Stalnaker, The Bronson Fund
Donald & Delma Taylor,
The Bentley Manchester Pet Fund
and The Tali Fund

Richard & Jill Tidman,
Fund of Our Friends
Michael Vacchione & Kevin Poole,
The Bonnie & Mittens Fund

J.B. Von Bothmer,
The Bonnie & Mittens Fund

J.B. Von Bothmer,
The Twilight of Tinsel Fund

Matching Gifts

We are thankful to our supporters who made their gift to IFAW go twice as far with a matching gift from their employer – and to the many companies who made a matching donation this year.

Aetna

Allstate

Altria Group, Inc.

American Express Foundation

Amgen Foundation

Amica Companies Foundation

Bank of America Foundation

BD Matching Gift Program

BP Matching Fund Programs

Bristol-Myers Squibb Company

Burlington Northern Santa Fe
Foundation

CARMAX Foundation

Casey Matching Gifts Program

Chubb & Son

Citizens Charitable Foundation

Computer Associates

Covidien

Deutsche Bank Americas Foundation

Endurance

Exxon Mobil Foundation

First Data Corporation

Gannett

GE Foundation

Give with Liberty

Global Impact

Google Matching Gift Program

Gorton's Seafood

HP Company Foundation

HSBC

IBM Corporation

Illionis Tool Works Foundation

ING

Intuit Foundation

John Hancock Financial Services

Johnson & Johnson

JPMorgan Chase & Co.

Kirkland & Ellis Foundation

Kraft

LexisNexis Cares

Liberty Mutual Group

Macquarie Group Foundation

Microsoft Matching Gifts Program

Motorola Foundation

Nike, Inc.

OppenheimerFunds, Inc.

Pearson, Inc.

Pepsico Foundation

PJM Interconnection, LLC

Progressive Casualty Insurance Co.

Radian

Rockefeller

Rockefeller Brothers Fund

Sabre Holdings United Way Campaign

Spanion LLC

Starbucks Matching Gifts Program

Subaru of America Foundation, Inc.

Susquehanna International Group, LLP

Sun Life Financial

T. Rowe Price Assoc. Foundation

Tenet Healthcare Foundation Matching
Gift Program

The Arthur J. Gallagher Foundation

The Charles Scwab Foundation

The Glenmede Corporation

The Home Depot Foundation

The J.P. Morgan Chase Foundation

The Morrison & Foerster Foundation

The New York Times Foundation

The Pfizer Foundation

The Prudential Foundation

The Wachovia Foundation

Topfer Family Foundation

Tyco Electronics

Tyco

Union Bank of California

United Way of New York City

Verizon Foundation

Washington Mutual Matching Gift
Program

Wellpoint Foundation

William Wrigley Jr. Company Fdn.



©IFAW/M. Mortas



©IFAW/S. Cook



©IFAW/S. Meixen

What better way to honor your cherished companions than by creating a special fund in their name to benefit animals around the globe. Your gift to the IFAW Pet Fund is invested in a permanently endowed and personalized fund named for your pet. The annual interest supports urgently needed veterinary care and owner education programs in disadvantaged communities worldwide.



In-Kind Donors

IFAW is grateful to these individuals and businesses who donated products, services, media placement, and other goods that enable IFAW to extend its protective reach to more animals in crisis around the world.

Beijing Trends Book, Co. Ltd.
Blue Q
Brit'Mag
Cape Cod Life
Das Vierte GmbH
DEEP Magazine
DSF Deutsches SportFernsehen GmbH
Dubai Culture
Global Village
Holland Label
IP Deutschland GmbH
Island Press
JCDecaux Advertising (Shanghai) Co., Ltd. - Beijing Branch
JCDecaux Advertising (Shanghai) Co., Ltd. - Chongqing Branch
JCDecaux Advertising (Shanghai) Co., Ltd. - Guangzhou Branch
JCDecaux Advertising (Shanghai) Co., Ltd. - Tianjin Branch
L' e-toile de L'info
LUSH Fresh Handmade Cosmetics
Mahdi Quatrameez
Mark Von Holden Photography
Media Communication Group
Media Transports
MTV Networks Germany GmbH
National Geographic Channel
Pet Channel
Sandcastle Publishing
Sociedad Humanitaria de Cozumel
Steven A. Henry Graphics
Tele 5 TM-TV GmbH
Whale Tails Chips
Winkler Crane Inc.

Bequests

IFAW is deeply honored and grateful to acknowledge gifts received during fiscal year 2009 from the following estates:

C.S. Aarts-van Gernerden
D. Adams
H. D. Aitken
K. I. Allen
Norah Allin
D. J. Allinson
Kathleen J. Allison
Marcia Altman
A. M. Anderson
V. Ankers
Mrs. Helen M. Annis
Joyce M. Appleby
Adrienne C. Arvidson
M. M. Ashby
Sheila Ashton
M. Ashton
Elsie L. Ashworth
M. Askham
Evelyn Aucock
S. G. Auld
V. Aust
I. E. Aykroyd
Mr. Backhouse
Janet A. Bain
E. Baker
E. Balchin
Mrs. Baldwin
Nora E. Baldwin
Jack M. Balfour
R. Bance
M. W. Band
A. N. Barbasch
J. M. Barnes
L. Batho
E. Baxter
D. Beesley
Susan Beighton
Mary Ellen Bell Charitable Trust
E. J. Bending
A. G. Benson
V. Bing
Jessie E. Birtwell
M. Black
M. Blackburn

Louis E. Blank
Annie Blenkinship
M. D. Booth
A. Boulton
H. Boulton
Y. Braddock
Ethel Bradshaw
Allan Brafield
A. Bramley
Frau Heidi Breustedt
M. Brewis
D. Bridge
S. Brisland
E. L. Britton
E. Brown
E. M. Brown
M. Brown
H. Bryant
J. P. Bullock
P. B. Burren
M. Burton
A. Camille Buschman
D. Bush
R. Butcher
R. Callum
J. Calvert
E. M. Campbell
Sylvia A. Cartner
E. L. Catt
N. Y. Chambers
Q. J. Chambers
E. Charlton
D. Cheley
Morelli Chertkow
S. Chesnalavage
Renee E. Chesters
Hilary C. Church
Ciak Family Trust
D. Clarkson
John C. Clayton
Miss Clenshaw
G.G. Clossen
J. F. Coates
D. C. Coates
Ethel M. Cocker
A. Cockle
Marjorie E. Collins
C. Cooke
I. Cordwell
M. E. Cory
C. Couch

Courtney-Benham
Alan B. Cox
Marie Iris Cox
B. Crosswaite
M. O. Cruse
A. Curtis
Beryl Cuschieri
Theresa Dacre
Mrs. Albert L. Dade
Dr. F. Marino D'Amato
V.E.J.van Dam-v.d.Oelsnitz
A.K. D'Arcy
Miss G. M. Davidson
Alwyn Davies
T. Davies
M. E. Davies
A.G. de Beer
N. de Jong
C. de Vlieger-Warmoltz
M.W. Defourney-Geraets
H. K. Dew
Angela Di Rubba
Violet Helen Dixon
M. K. Dodds
M. Donnelly
Monica Donovan
Jeanne Drake
Ronald E. Drew
J. M. Dubois
C. M. Duijff
C. E. Dumbleton
I. Dunford
J. Dunn
George R. Dunstan
M. Dutoit
Ms. Dwyer
Mary E. Dyan
M. Eastwood
Phyllis L. Edmonds
O. Edmunds
Mabel E. Edwards
D. Edwards
V. Edwards
M. Edwards
J. W. Ellis
Kathleen N. Ellison
L. Esbach
Pamela D. Evans
J. Evers
V. Fare
F. Farley
Catherine Farquhar Trust



Ways to Give



©IFAW/D. Willerts



© IFAW/Rinku Gohain-VTI



©IFAW/J. Cumes

We have been protecting animals worldwide for 40 years and you can help make sure we continue for 40 more. Including IFAW in your will is one of the easiest and most valuable gifts you can give to the animals. We are indebted to the legacies of those supporters who have left bequests that provide essential funds for animal rescue, veterinary care, habitat protection, and cruelty prevention.

Donors

Bequests (cont.)

J. Ferguson
Alma F. Ferguson-Davis
F. M. Fewson
Dolores M. Fiala
Patricia Findlay
Margaret Firmstone
Mary B. Fish
K. Fitzgerald-Reynolds
J. Ford
P. F. Forrest
David R. Foskett
Margaret Foster
M. Foster
R. Franks
Jeanne French
Frau Elfriede Friedl
Ivy Galpin
Joyce M. Gamble
Mrs. Garrett
S. M. Gaskell
Mrs B. L. Gehrig-Williams
Frau Rita Geserick
H. Gibson
I. A. Gibson
C. W. Gibson
Mary Jane Giles Trust
M. Giles
K. B. Gittens
Eva Joan L. Glaser
E. M. Glynn-Jones
Alfred R. Gnam
Marjorie Godby
M. Goddard
Elsie Goodridge
Margaret M. Gooley
M. Goss
F. M. Gould
J. Grant
Betty Grant
C. Grantham
Frau Gudrun Graubner
Beatrice Gray
U. Greenhalgh
N. B. Greenhill

D. W. Greenslade
Mary F. Greenwood
E. Griffiths
D. I. Groom
Denise Grover
Mrs. H. J. Haberle
M. E. Hadley
L. M. Hadlow
Frau Ilse-Erika Hahn
M. Hall
Joan Hall
D. Hall
J. M. Hall
F. M. Hallam
Eileen Halley
John W. Hammon
E. Hammond
Mrs. Hammond
Peter Ward Hanna
Anthony & Audrey Hargreaves Trust
Lyn Harris
Marion Hart
S. E. Hart
W. S. Hart
G. Harvey
Dorothy Harvie
Y. Hatton
Mrs. Marjorie Haugen
Jan Hayden
O. B. Haydon
E. M. Hayes
S. C. Hazewinkel
Jane Heath
R. Hedderwick
Frau Dorothee Heintz
M. P. Helyar
Ms. Viola M. Henderson
N. Henfrey
E. A. E. Hess
C. Heuts
T. Hickey
Gertrude D. Hicks
A. R. Higginson
H. Hill
J. Hillerstrom
Erika D. Hilliker

Vincent Hillyer
Betty D. Holberton
L. R. Holmes
C. B. Holt
Betty M. Hope
R. Hopkins
Winona V. Houle
Freda Housecroft
H. Houtgraaf
G. Howard
J. D. Howrie
G.C.H. Huge
G. Hughes
B. Hughes
M. Hummel
Y. Husken
M. Hutchinson
Frau Anna Ilgeroth
Estate of Hannelore Maria
Ionannides
V. Isdale
A. M. Ivey
G. S. Jackson
Mrs. Jacob
Frau Irmgard Janssen
O. Jeffrey
D. J. Jenkins
O. Jennings
D. Jerome
Rosemary V. Johnson
E. H. Johnson
M. Jolowicz
Charles R. Jones
E. P. Jones
O. G. Jones
S. Jones
Kenneth Jones
B. Joyce
Mr. Joe Kawecki
Gordon A. Keefe
J. Kelly
B. Kennewell
M. Kiely
Ruby Alison Killick
Eleanor M. Killip
M. King
Gloria King
Bertha L. Kirk
Mechthild Kleemann
P. Knight
B. P. Knowles
Lillian C. Koehrer

Frau Edith Koellner
G. Koppelle-Teunissen
Mr. Lawrence Krain
P.Kwarten-Kreutz
N. Lacey
E. Lake
E. Lambert
B. Lambie
R. I. Lancaster
B. Lancefield
Gerald L. Laufer
Mr. Le Breton
R. Leaker
E. Lear
E. A. LeClerc Andersen
Sister Janet V. Lee
O. Lee
D. Leeuwrik
Corinne Bree Levinsohn
M. Leyshon
Mildred Lillis
C. Linthorst-van Besouw
Ann Livingston
J. Lloyd
M. Lockhart
I. Long
J. R. Lorrimer
Mr. Chris Loubser
Evelyn Louth
Mrs. Robert R. Lucas
Ms. Deborah Lundquist
M.L. Maas
H. Ruth MacKay
Valerie Maddison
Gladys E. Maglennan
Frau Barbara Markfelder
M. Markham
D. Marsden
D. Marsden
V. Marsh
A. Marsh
E. E. Marsh
E. Mascord
A. Mason
J. Masters
M. K. Mawston
Alexandria E. Maylou
Clem McDermott
Terence C. McQuillin
Barbara J. McVety
Henry C. Measor
Jean Merritt
Elizabeth Millar
Dorothy K. Milton
P. Mol
D. Mora
T. Moran
Isabel Moreton
R. Morgan
E. C. Morland
Georgina J. Marrant
Ethel M. Morris
S. J. Morris
B. Morris
Clarisse M. Mountfort
F. P. Moyes



©IFAW/WTR, Gohain



©IFAW/WTI Phulmani



©IFAW/A. Brand

IFAW is extremely thankful for our donors around the world whose ongoing monthly contributions enable IFAW to respond immediately when animals need our help. Champions have their monthly contributions deducted automatically from their bank account, saving time, postage, and check processing costs, which allows more money to go directly to the animals.



M. C. C. Mulder
 Frau Erika Müller
 M. S. Murchie
 Kevin P. Murtagh
 L. Neill
 Ingeborg K. Nelson
 M. A. Newbold
 Mary A. Newlon
 B. Nicholls
 J. Nisbet
 G. Notman
 Felix K. Nowaczyk
 Avril Oatway
 K. Oconnor
 J. D. O'Connor
 J. D. Oliver
 D. Oliver
 W. O'Neil
 H. M Oosterhuis
 Frau Monika Ortmann
 B. Orwin
 Mrs. H.C. Oshmann
 W. Otsen
 Frau Karoline Ott
 E. R Ottenhof
 R. E. Page
 D. A. Palfrey
 E. R. Parkinson
 G. Parrett
 Thelma Parrish
 W. Parry
 P. M. Pascoe
 Tanya Pasic
 D. Pates
 Irma K. Paule
 E. F. Payne
 D. M. Payton
 Christine Pearce
 A. Peel
 Ralph G. Peiscop-Grau
 B. Penman
 C. E. M. Percy-Eade
 J. Perry
 Henry H. Perry
 C. M. Petter
 Frau Ellinor Pfann
 Margaret J. Pidgeon
 K. J. Pipkin
 P. Platt
 J. Powis
 J. Powney
 A. Prentice
 Lynn R. Price
 Mavis Price
 P. E. Quainton
 P. Randall
 Muriel Read
 E.M. Denier van der Gon
 J. Reid
 Jean Barger Rice
 I. Richardson
 G. Richardson
 E. J. Riddell
 E. M. Riddett
 J. Ridgway
 Carolyn Riebel Irrevocable Trust

Frau Dr. Gerda Riediger-Pohl
 David J. Riley
 I. Roach
 William J. Roberts
 Mr. George Osbourne Robertson
 Ms. Lucy Robertson
 D. H. Rogers
 Brian Rook
 B. Roper
 J. Roscoe
 I. M. Rose
 S. Ross
 Kathleen B. Rowland
 J. B. Rowling
 Herr Hellmuth Royen
 Silva Ryerson
 N. Salmons
 Beryl Sams
 Gerda H. Sauerschell
 A Saunders
 Gwendoline Saunderson
 M. S. Scanlon
 J. G Schapelhouman
 Lorraine A. Scherer
 L. Schipper-van Aken
 G. Schmid
 Frau Erna Schmidt
 D. Scholes
 Peter Scholes
 M. M. J. Schoonhen-Scheffers
 Eileen E. Schroeder
 A.E. Schut
 Dr. Schwartz
 Frau Waltraud Schwitalla
 R. Scott
 Frau Gisela Senator
 P. I. Sharman
 Sybil P. Shaw
 O. Sheldon
 Sima R. Shor
 B. Shuck
 J. Simcox
 Robert Simha
 Evelyn Simpson
 Eileen D. Simpson
 J. Simpson
 Nancy Skinner
 Jean Slee
 Freda Smail
 D. M. Smart
 R. Smerdon
 J. Smit

M. G. Smith
 M. E. Smith
 D. Smith
 L. Smith
 B. Smith
 R. Smullen
 Joy N. Sneyd
 Katherine Solomon
 L. Southwell
 June V. Sparke
 Charlotte E. Stanley
 H. Stapleton
 M. Stein
 Frau Liesel Stephan
 G. W. Sterry
 C. Street
 D. Strode
 R. Struthers
 B. Stubbs
 E. D. Swann
 J. Sygrove
 Beatrice M. Symons
 K. Tancock
 Nora R. Tate
 A. Taylor
 Katherine Margaret Taylor
 Mrs. Joanna Tedman
 Z. Tester
 S. C. Theobald
 Joan Thomas
 Hugh M. Thomas
 Mary Thomas
 B. Thompson
 L. Thompson
 V. M. Thompson
 E. H. Thomson
 M. Y. Tickner
 Phyllis Torres
 E. Toth
 Mrs. Audrey Trainor
 R. Treasure
 H.G. Trompert
 P. F. Trought
 B. Truscott
 Yvonne Wunderlich Trust
 Mary Jane Giles Mari Trust
 E.H. Gregory Trust
 Carole A. Turner
 C. Twisse
 Kathe Underwood
 B. M. Underwood
 J. S. Unger

E. Vaissiere
 Rose Valentine
 E. C. van Beelen
 F. Van Bommel-Reedijk
 E.J. van de Linde
 P. J. C. van der Bruggen
 J.P. van der Giessen-Trompetter
 H. J van der Kok -Putten
 P. van der Maaden
 P.H. van Deursen-Vialle
 A.C. van Wijk-Koppen
 Mrs. R. Vanderlip
 Alice K. Vaughan
 W. F Velleman
 L. Veugelers
 J. Vickerstaffe
 L. Vollebregt-de Kok
 Catherine Von Schon
 James B. Wadsworth
 V. B. Wainwright
 Mrs. Wallace
 Kate Ward
 Leslie Washington
 Ms. Patsy B. Way
 Frau Birgit Weber
 Norine D. Wedig
 M. Welbergen
 C. Weller
 Dorean H. Wert
 H. Wheeldon
 M. Wheeler
 Freda Whitaker
 Mrs. Whittamore
 T. M. Whitting
 Edna Wigley
 F. A. C. C. Wijntjes
 J. Wilde
 J. C. Wilder
 Dora L. Wilkins
 Clifford Wilkinson
 Loni Wilson
 H. M. Wilson
 K. F. Wilson
 R. Wissing
 Y. Woellwarth
 V. Pauline Wollaston
 M. Wood
 B. Woodliff
 Helen Woolfenden
 Patricia Yeoman
 Frau Helma-Wilhelmine Zielinski
 Henry C. Zimpelmann

Ways to Give



©IFAW/P. Vandierwaker



©IFAW



©IFAW/V. DeWitt

Thanks to some unique partnerships with businesses, corporations, and foundations, IFAW is able to extend its protective reach to more animals around the world. These partners share in promoting IFAW's mission to improve the welfare of wild and domestic animals globally.



International Headquarters
290 Summer Street
Yarmouth Port, MA 02675
United States

Tel: (508) 744 2000
Tel: (800) 932 4329
Fax: (508) 744 2099
info@ifaw.org

Every year, Canada's Gulf of St. Lawrence hosts one of nature's most wonderful spectacles. As the gulf freezes over, hundreds of thousands of Harp seals migrate to the ice to give birth. By early spring, litters of snowy white seal pups loll on the ice, trilling softly. The seals are surrounded by a pristine landscape, where sunlight, water, and ice combine to produce the deepest, richest aquamarine blue found anywhere on earth. We've made it the color of our logo because it symbolizes all that we are fighting to protect.

Offices in: Australia | Belgium | Canada | China | France | Germany | India | Japan | Kenya
Netherlands | Russia | South Africa | United Arab Emirates | United Kingdom | United States