



International Headquarters
290 Summer Street, Yarmouth Port, MA 02675





IFAW EXECUTIVE STAFF

FREDERICK M. O'REGAN President and Chief Executive Officer
AZZEDINE T. DOWNES Executive Vice President and Chief Operating Officer
TEREZA BYRNE Vice President of Development and External Affairs
A.J. CADY Director of Animals in Crisis and Distress
MICHAEL COTE Chief Information Officer and Director of Internal Services
KEVIN MCGINNIS Director of Human Resources
CINDY MILBURN Acting Director of Public Affairs
MELANIE B. POWERS Chief Financial Officer
KEVIN SHIELDS Director of Wildlife and Habitat Protection

THE INTERNATIONAL FUND FOR ANIMAL WELFARE works to improve the welfare of wild and domestic animals throughout the world by reducing commercial exploitation of animals, protecting wildlife habitats, and assisting animals in distress. IFAW seeks to motivate the public to prevent cruelty to animals and to promote animal welfare and conservation policies that advance the well-being of both animals and people.

IFAW US REGIONAL COUNCILS

LINDA BEGGS
JESSICA GIFFORD BUSCH
G. KENNETH BERNHARD
IRENE CROWE
ALEXANDRA DENMAN Chair, Southern California
CRIS FARLEY
SARA FARLEY
SHEILA FITZGERALD
RACHEL GLICKMAN
DIANA LAMB
JOHN LAMB
KIT LILLY
GERALDINE MASLANKA
LAURIE MONAHAN

PAMELA MORTON
ELIZABETH ORECK
MINOU PALANDJIAN Chair, New England
JENNIFER LEE PRYOR
HEATHER REED
KATHERINE ROHRBACHER
BETSY ROSENFELD
CLAIRE ROSENZWEIG
DAN SAUNDERS
DR. KUMARA SIDHARTHA
LOUISE SOREL
VICTORIA STACK Chair, Washington, DC
DELMA TAYLOR
ANDREA THOMAJAN
NANCY VOLPERT
MITCHELL S. WAGNER
JEANNIE WILLIAMS

IFAW WORLDWIDE BOARD OF DIRECTORS

THOMAS C. RAMEY Chair

ELLIOTT G. CARR
MANILAL PREMCHAND CHANDARIA
ALEXANDRA DENMAN
MARGARET A. KENNEDY
CHRISTOPHER J. MATTHEWS
DAVID METZLER
ROBERT J. MONAHAN JR.
THOMAS P. O'NEILL III
MINOU PALANDJIAN
KATHLEEN SAVESKY
VICTORIA STACK

BRIAN HUTCHINSON IFAW Charitable Trust, UK, Board of Directors
SEAN ROCKS IFAW Charitable Trust, UK, Board of Directors
PAUL F. WORTHINGTON IFAW Charitable Trust, UK, Board of Directors

KEELY SHAYE BROSNAN Honorary Board Member
PIERCE BROSNAN Honorary Board Member
LEONARDO DICAPRIO Honorary Board Member
BEN STEIN Honorary Board Member
GORAN VISNJIC Honorary Board Member



ACHIEVING LONG-TERM GAINS

THIS YEAR saw a culmination of positive results in a number of campaigns following years of hard work. I am very proud to share these accomplishments with you in this annual report.

As the fiscal year came to a close, Meru National Park was awarded 'world-class' status as a conservation area. This culminates a multi-year partnership between IFAW and the Kenya Wildlife Service (KWS) to restore the park, which was heavily poached by bandits over a number of years. The techniques and tools developed to reinvigorate Meru are already reaping results at Tsavo National Park, Kenya's largest park. As we completed our second year of commitment to restore and enhance Tsavo, security has already improved in the park.

Even though the Convention on International Trade in Endangered Species allowed sales of stockpiled elephant ivory, a nine-year suspension of ivory trade was adopted at this year's Conference of the Parties and was a major achievement. IFAW staff played a key role in the adoption of this suspension.

At the annual meeting of the International Whaling Commission, IFAW helped turn the tide against whaling nations as a majority of member countries supported whale conservation. Similarly, IFAW's seal campaign gained momentum, as witnessed in a number of European countries calling for seal bans over the last year.

IFAW's unrelenting yet pragmatic approach, working with communities and governments to improve conditions for animals and people, requires long-term planning, determination and financial support.

We couldn't do it without you. I hope you will share my pride in the gains made for animals this year as you read through this report.

Gratefully,

FRED O'REGAN

President and Chief Executive Officer



A STRONG FOUNDATION FOR THE FUTURE

OVER THE PAST YEAR, IFAW has made important progress, both internally and externally, that will provide a solid foundation for its campaigns in the years ahead.

The adoption of a multi-year strategic plan has further clarified priority areas for institutional program efforts. These are firmly linked to IFAW's fundraising and budgeting process. Sometimes these investments are taken for granted in a nonprofit organization, but every gain IFAW makes on behalf of animal welfare depends on the strength of these systems.

One result of our stringent operational standards is top ratings by charity monitoring groups in the US and the UK.

As an international animal welfare and conservation organization, IFAW recognizes that how we conduct our business — inside the office and out — has a direct impact on the animals and habitats that we work every day to protect.

Speaking for the Board of Directors, we are proud of IFAW's achievements and the dedicated employees who achieve them. However, none of this would be possible without your inspiring generosity and commitment to the earth and its creatures. You have helped us build a strong foundation for animal welfare around the world.

Thank you for your steadfast support.

A handwritten signature in white ink, appearing to read 'TRamey', written over a light blue background.

THOMAS C. RAMEY
Chair, IFAW Board of Directors

A BRIGHTER FUTURE FOR WILDLIFE AND PEOPLE IN TSAVO NATIONAL PARK

In 2005, IFAW initiated an ambitious five-year plan with Kenya Wildlife Service (KWS) to restore and enhance Tsavo National Park, the largest protected wilderness area in Kenya. By refurbishing Tsavo's ranger quarters and vehicles, improving electricity and water supplies, and outfitting rangers and researchers with critical equipment, IFAW donors are helping KWS protect elephants and other wildlife in Tsavo from poachers, habitat degradation and conflict with surrounding communities.

IMPROVING PARK SECURITY | During our second year of support, IFAW donors provided critically needed aid for ranger operations. Donor contributions:

- Helped rebuild Kanjaro Security Base and installed a new clean water system in Tsavo West National Park
- Supplied five new vehicles, which are essential to protecting wildlife and visitors in such a vast park
- Purchased 10 portable solar panels to improve radio communication for rangers patrolling remote areas
- Dispatched five GPS devices for researchers studying elephants and other species
- Supplied eight computers for management and research

As a result, rangers were able to travel farther distances, even during the rainy season, to protect and monitor wildlife, and collect data on instances when humans and elephants come into conflict. Computer efficiencies contributed to faster analysis of important data such as animal counts and mortality rates, rainfall accumulation and bushmeat hunting activities.

PROTECTING WILDLIFE AND HABITAT | Thanks to improved transport and communication, KWS rangers:

- Eliminated one of the park's most wanted rhino poachers, recovering automatic weapons and more than 100 rounds of ammunition
- Removed thousands of wire snares that were set illegally to capture wildlife

- Moved 100,000 head of cattle, which were grazing illegally, out of the park so they would not come into conflict with wildlife or damage habitat

These efforts are already improving security in the park. IFAW and KWS will continue to increase protection for animals and people in Tsavo in the year ahead.

CONTRIBUTING TO THE COMMUNITY | Thanks to an IFAW donor's generous gift of \$33,700, renovations began on Kasaala primary school bordering Northern Tsavo. This project will provide clean water and classrooms for 800 children living near Tsavo. Such an initiative builds community support for conservation and deters young people from turning to wildlife poaching by opening the door to educational opportunities in this remote area. We must raise an additional \$55,000 to complete the enhancement of the school for Tsavo's children and the local community.

THREATS ARE GROWING | Sadly, more illegal ivory from African elephants has been confiscated in large-scale seizures between August 2005 and August 2006 than in any other year since the international ban on ivory trade in 1989. Elephant poaching continues in full-swing and wildlife rangers continue to be killed. IFAW must ensure that Tsavo's brave rangers have all the tools, equipment and support systems they need to combat this growing danger.

Your donations can provide the tools rangers need to pursue poachers and help improve the quality of life for animals and for people in communities around the park.

YOUR GIFT OF :	WILL :
\$5,000	repair ten miles of critical roads for anti-poaching patrols
\$15,000	fuel 30 days of aerial patrols of Tsavo's vast landscape
\$40,000	build a staff welfare center for rangers and their families
\$90,000	buy one Super Cub airplane for anti-poaching operations

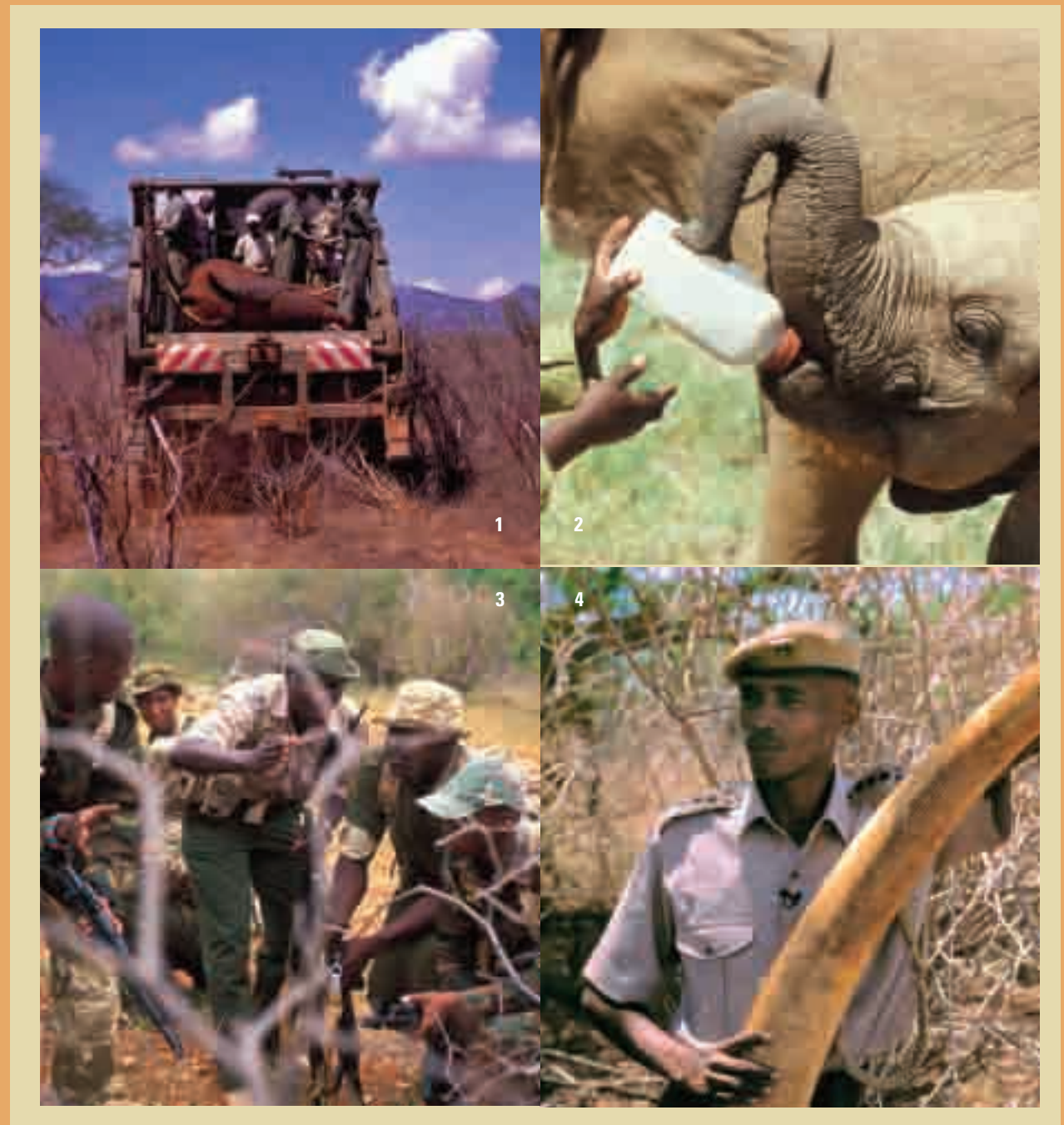
Through this critical campaign, IFAW hopes to preserve one of the last vast habitats for wild animals in all of Africa. Please join us and ensure that Tsavo National Park and its magnificent wildlife are protected for the future.

IFAW PRIORITY AREAS FOR SUPPORT

Tsavo National Park is one of IFAW's priority areas for support. Other priority programs are:

- Protecting Dogs and Cats
- Global Whale Conservation
- IFAW's *Song of the Whale*
- Fighting Commercial Seal Slaughter
- Emergency Relief
- Protecting and Rehabilitating Bears
- IFAW Animal Action Week

IFAW has made measurable gains in these priority areas over the last fiscal year. But threats are growing and needs continue to exceed resources. As you read about IFAW's achievements in this annual report for July 1, 2006–June 30, 2007, know that your support for IFAW continues to make a real difference.



1 & 2 MORE THAN 200 ELEPHANTS WERE RELOCATED TO TSAVO EAST NATIONAL PARK BETWEEN 2005 AND 2006, A SIGN OF IMPROVED SECURITY FOR KENYA'S THREATENED ELEPHANTS. LONG-TERM SECURITY MEANS THE PARK CAN ACCOMMODATE THREATENED ELEPHANT POPULATIONS FROM OTHER PARTS OF KENYA.

3 & 4 TSAVO WEST NATIONAL PARK IS PRONE TO BUSHMEAT HUNTERS AND IVORY POACHERS FROM TANZANIA. THE NEW KANJARO SECURITY BASE WILL ACCOMMODATE A PLATOON OF 30 RANGERS TO ENHANCE SECURITY IN THIS AREA OF THE PARK.

INTERNATIONAL CAMPAIGNS: ACHIEVING GAINS AMID GROWING THREATS

Utilizing the expertise of IFAW staff from around the world, we launch major campaigns to protect animals and their habitats. The past year brought a number of achievements for animals and people. But growing threats undercut some of these victories, strengthening IFAW's resolve to work even harder in the months ahead protecting wildlife, domestic cats and dogs, and the people whose fates are intertwined with animal welfare.



A REPRIEVE FOR ELEPHANTS | At the 14th meeting of the Convention on International Trade in Endangered Species (CITES), held in The Hague, Netherlands, there was a landmark approval of a nine-year suspension of trade in elephant ivory. IFAW's support of unprecedented cooperation among Anglophone and Francophone African elephant range states — the first time these countries stood together against ivory trade — facilitated this landmark decision. IFAW is pleased with the convergence of many African nations on this very important issue. However, the trade suspension did not come without cost: The decision allowed for huge stockpile sales. Elephants remain in a precarious state, and IFAW will continue to work to prevent the rampant poaching that stockpile sales and any legal ivory market encourage.

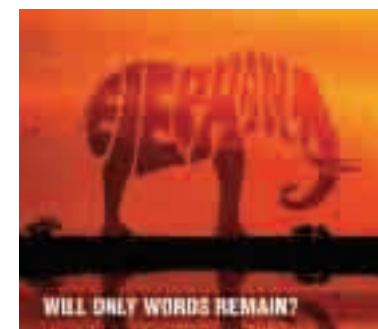
CITES Parties also agreed to set up a workshop to address illegal trade over the Internet, indicating a higher level of recognition for the need of an increased focus on enforcement, particularly to control the escalating electronic sales of illegal wildlife products. IFAW's ongoing campaign was a key factor in eBay's announcement to ban all cross-border trade in elephant ivory.

JUMBO STRIDES AT TSAVO | IFAW's efforts to help the Kenya Wildlife Service (KWS) restore and enhance Tsavo National Park and the greater Tsavo Conservation Area are already paying off. Thanks to our donors' generous support, increased wildlife and visitors' security, enhanced radio communication and building improvements are having positive impacts on biodiversity and management in the Area.

IFAW's US\$1.25 million support of Meru National Park's restoration helped return Meru to a world-class conservation area. Following years of depletion, this famous Kenyan park had about 1,300 various wildlife species moved in, including elephants, black and white rhinos, reticulated giraffes, endangered Grevy zebras and leopards. IFAW is basing our work at Tsavo on this model of success.



IFAW HELPED TAVETA AREA COMMUNITY MEMBERS AND THE KENYA WILDLIFE SERVICE START CONSTRUCTION OF A 78-KM ELECTRIC FENCE NEAR TSAVO NATIONAL PARK TO REDUCE HUMAN-ELEPHANT CONFLICT. DR. NAOMI SHABAN, TAVETA PARLIAMENT MEMBER, AND IFAW BOARD MEMBER DR. MANILAL CHANDARIA RAISE A FENCE POLE.



THIS AD CAMPAIGN CREATED THROUGH A PRO BONO RELATIONSHIP WITH THE RAPP COLLINS/DDB GROUP, CULTIVATED BY IFAW'S NETHERLANDS OFFICE, WAS VERY SUCCESSFUL IN WINNING SUPPORT FOR ELEPHANTS AND OTHER THREATENED SPECIES IN THE RUN-UP TO THE CITES MEETING IN THE HAGUE.

ADVANCES ACROSS RANGE STATES

In southern Africa, IFAW played a leading role in advocating for reform of elephant management. IFAW has lobbied for a holistic approach to elephant management based on sound scientific principles, rather than the narrow-minded application of culling as a solution to elephant crowding in confined areas. Our "mega-parks for meta-populations" research shows governments how to address causes, not symptoms, of perceived overpopulation. At year's end, through legislation on Norms and Standards for Elephant Management in South Africa, the government was set to commit substantial funds to research more humane solutions.

In China, IFAW established an elephant identification database in the Xishuangbanna Nature Reserve, which will provide valuable statistics on individual elephants to help

reduce conflicts between Asian elephants and villagers sharing habitat in Yunnan Province. IFAW also organized three anti-poaching patrols in the Mengla and Shangyong sub-reserves.

The Wildlife Trust of India (WTI) identified 88 trans-boundary wildlife corridors, critical for elephant migration, across India. IFAW and our partner WTI purchased land for and secured the first corridor of approximately 25 acres.

IFAW-funded DNA testing, which tracked the origin of ivory seizures, revealed that a 6.5-ton ivory seizure in Singapore in 2002 originated from elephants in Zambia. This research helps law enforcement officials identify poaching hotspots and key smuggling routes, prompting efficient allocation of anti-poaching resources.

STRIKING BLOWS TO WHALERS

IFAW's whale campaign attained a number of significant victories over the past fiscal year. In the run-up to the annual meeting of the International Whaling Commission (IWC) in Anchorage, Alaska, in May, IFAW launched a whale plane tour of the United States, with Whale Program Manager Patrick Ramage and his son Henry flying to key states to promote whale conservation. More than 12,000 children from all 50 states sent in whale art for a contest, and government officials from across the country issued proclamations of support for whale protection. At stops along the way, Henry reminded his contemporaries that, "children need to get involved to save the whales for our generation and for future generations."

To encourage a strong stand against commercial whaling at the IWC, IFAW led a *Whales Need US* coalition, aimed at US delegates to the international forum, which won support from members of the House of Representatives. At the IWC meeting, IFAW's awareness-building and lobbying helped gain a strengthened majority of countries supporting whale conservation and an adoption of a resolution condemning Japan's so-called 'scientific' whaling. Pressure continued at the meeting of the Convention on International Trade in Endangered Species, where a

resolution was adopted to continue to respect the IWC moratorium on commercial whaling.

When Iceland resumed commercial whaling in October 2006, an IFAW online campaign generated more than 85,000 international protests sent directly to Iceland's main newspaper, *Morgenbladid*. An IFAW poll showed that 48 percent of Icelanders believe commercial whaling will have a negative impact on the country's tourism industry and leading Icelandic businesses issued statements protesting commercial whaling.

RESEARCH AND OUTREACH ONBOARD

SONG OF THE WHALE | The *Song of the Whale* team returned to Iceland for the months of July and August 2006 to conduct research, education and outreach. By showcasing IFAW's benign research techniques, the team demonstrated that whales don't need to be killed or harmed in any way to be studied. Icelandic student interns worked alongside IFAW's expert research team to learn more about whale conservation.

From August 2006 to March 2007, the *Song of the Whale* team focused on raising public awareness in the United Kingdom and Europe. The vessel was a special feature at the Southampton Boat Show and sailed from Liverpool to London, Brussels, The Netherlands and France. More than 3,400 adults and children visited the boat along with a host of journalists. In addition, receptions for government ministers and other politicians garnered greater support for IFAW's whale campaigns and marine mammal conservation efforts.

The year ended with *Song of the Whale* sailing the Eastern Mediterranean Sea to survey the presence, numbers and distribution of sperm whales and other cetaceans. This is part of an ongoing collaboration between IFAW, local researchers and intergovernmental organizations as part of the Agreement on the Conservation of Cetaceans of the Black Sea, Mediterranean Sea and contiguous Atlantic Area (ACCOBAMS). The purpose of this work is to increase protection for threatened whale and dolphin populations in the ACCOBAMS area.



Loyalty to Animals and Their Welfare
Grace Gabriel first learned of IFAW when she was working for a television station in Utah and was asked to help film some of our projects in China. Following this experience, Ms. Gabriel saw a need to promote animal welfare in China and she petitioned IFAW to open an office. In 1997, she opened the IFAW Beijing office.

Growing up during China's turbulent "Cultural Revolution," Ms. Gabriel was able to have pets and she embraced their unconditional loyalty. "Dogs and cats don't think about your family or political background, they just love you," she said. This sense of loyalty has guided her ever since.

As Director of IFAW's China office, and now as Asia Regional Director, Ms. Gabriel has helped achieve some amazing milestones: From Animal Action Week to companion animal advocacy, raptor rescue to elephant habitat and protection work, IFAW has made strides in improving conditions for animals and in changing people's opinions about how animals should be treated.

"IFAW is building collaborative relationships with government agencies to enhance animal welfare and conservation policies in China," she said. Media attention on the rehabilitation and release of four raptors at IFAW's Beijing Raptor Rescue Center prompted a government official to order an immediate crackdown on illegal wildlife trade. Through education and economic empowerment to alleviate human-elephant conflicts in Yunnan, IFAW gave local people the confidence to improve their lives and raised animal welfare awareness. Now villagers voluntarily protect elephant habitat.

IFAW is changing minds and improving conditions for animals in China.

BUILDING EMERGENCY RESPONSE

CAPACITY | The world was buffeted by earthquakes, forest fires and flooding during the past fiscal year and IFAW rushed to rescue animals and people. In the wake of damage and destruction, IFAW's Emergency Relief (ER) team provided assistance to thousands of animals, ranging from oil-coated birds to injured and displaced livestock to stranded elephants.

Following a mystery oil spill in Cabo Virgenes, Argentina, IFAW worked closely with local rescue groups to take in and clean 224 oiled penguins. The government and air force flew the Magellanic penguins to a warmer location to recover and in July 2006, dozens of rehabilitated penguins were returned to the wild.

In January and February 2007, IFAW worked with our partner organization Wildlife Trust of India (WTI) on the release of two orphaned rhinos and six orphaned elephants to Manas National Park, a World Heritage Site.

Next IFAW's ER team raced to Indonesia where people and animals suffered from unrelenting disasters including a tsunami, a volcanic eruption, forest fires and flooding.

To bolster our emergency response capacity in the United States, IFAW merged with the Cape Cod Stranding Network, a partnership that will increase IFAW's ability to save stranded and entangled marine mammals on the shores of its Massachusetts headquarters location.

EXPERT CARE FOR ORPHAN BEARS |

IFAW's Orphan Bear Cub Rehabilitation Project in the Tver region of Russia, 450 km from Moscow, successfully released nine bear cubs in the fall of 2006 and accepted another 13 bears for rehabilitation in the first half of 2007. IFAW and Russian bear biologist Dr. Valentin Pazhetnov, the project founder, were proud to host the first international workshop of bear rehabilitation experts. More than 47 participants from 14 different countries attended the workshop, which focused on identifying critical components of bear rehabilitation, including regional and

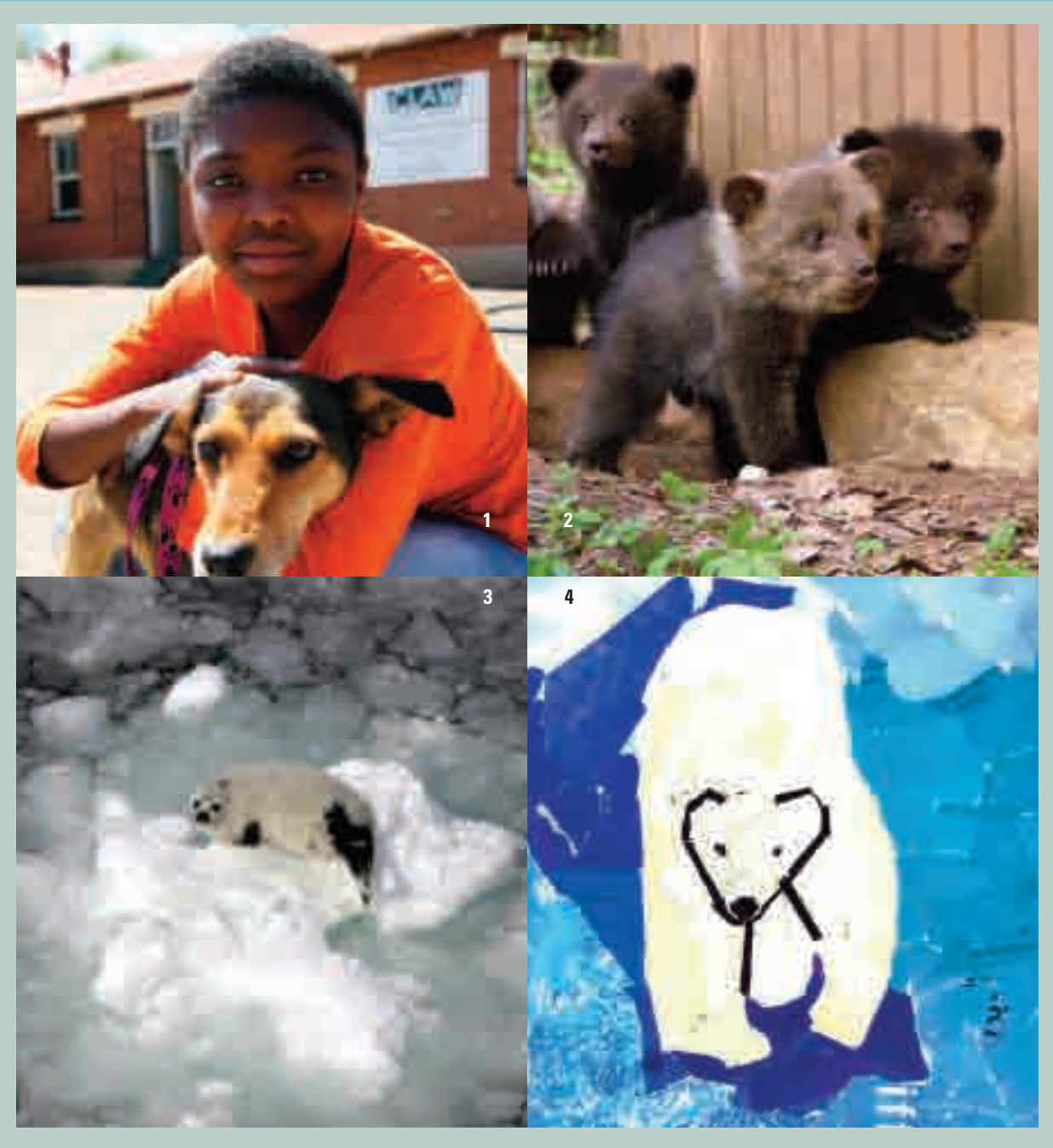


1 AS THE FISCAL YEAR CLOSED, ICELAND WAS POISED TO CANCEL ITS COMMERCIAL HUNT FOR MINKE WHALES AND ENDANGERED FIN WHALES.

2 THIS PAINTING, BY 11-YEAR-OLD PAUL WON FROM LIVINGSTON, NJ, WON THE NATIONAL GRAND PRIZE IN IFAW'S HUMPBACK WHALE DRAWING CONTEST.

3 A CAPE AIR CESSNA AIRPLANE, PAINTED WITH HUMPBACK WHALES BY ARTIST JUREK, TRAVERSED THE UNITED STATES RAISING AWARENESS AND AN OUTPOURING OF SUPPORT TO PROTECT WHALES.

4 THE REINTRODUCTION OF RHINOS TO MANAS NATIONAL PARK IS SIGNIFICANT: THEY HAD BEEN WIPED OUT IN THE 1990s. IFAW AND WTI HAVE RELEASED TWO RHINOS, ORPHANED BY SEASONAL FLOODING, IN A PROTECTED 89-HECTARE ENCLOSURE WHERE THEY ARE LEARNING TO FORAGE.



1 AS PART OF IFAW'S COMMUNITY EFFORTS IN JOHANNESBURG TOWNSHIPS, YOUNG PEOPLE, INCLUDING SOME CHARGED WITH MINOR CRIMES, SPEND SATURDAYS LEARNING COMPASSION HANDS-ON BY CARING FOR COMPANION ANIMALS.

3 IFAW OBSERVERS SAW FIRSTHAND THE DISASTROUS IMPACT OF GLOBAL WARMING ON ICE CONDITIONS. SEAL PUP MORTALITY WAS EXTREMELY HIGH THIS PAST YEAR.

2 THESE ORPHAN BEAR CUBS IN RUSSIA ARE KEPT IN AN IFAW-FUNDED HEATED NURSERY HOUSE UNTIL THEY ARE OLD ENOUGH TO LEARN TO LIVE IN THE WILD. MORE THAN 120 BEAR CUBS HAVE BEEN RESCUED.

4 ARTWORK FOR IFAW'S ANIMAL ACTION WEEK CALENDAR COMPETITION BY US STUDENTS SHOWED THEIR CONCERN FOR A NUMBER OF ANIMALS IN DANGER.

species variations. IFAW is working with Dr. Pazhetnov to develop uniform protocols for bear rehabilitation to be adopted around the world.

In the Pakke Wildlife Tiger Reserve in Arunachal Pradesh, India, where IFAW and our partner organization Wildlife Trust of India established a rehabilitation center for Asiatic black bears, four bear cubs rescued after their mothers were killed by hunters are learning to forage and live in the wild.

COMMUNITY COMPASSION FOR DOGS AND CATS | IFAW's community efforts to improve the welfare of cats and dogs continued to grow during fiscal year 2007.

In Russia, IFAW inaugurated a new Community Animal Welfare Center that will supplement the ongoing work of the mobile clinic to provide spay/neuter surgeries, and veterinary and emergency care to dogs and cats in Moscow. The new Center will also greatly expand IFAW's educational outreach, training and legislative lobbying efforts in Russia. Around 1,200 dogs and cats received care through IFAW's mobile clinic last year.

IFAW's community-led animal welfare projects in South Africa treated approximately 30,000 pets during the past fiscal year. A new youth crime prevention program focusing on close interaction with dogs gained popularity.

Two IFAW-run spay/neuter clinics in remote James Bay Cree communities in Northern Canada provided surgery, vaccinations and veterinary care to 486 cats and dogs.

The Yudisthira Street Dog project in Bali, with support from IFAW donors, provided care for 3,109 dogs that roam this popular vacation destination. Treatments ranged from spay/neuter surgeries, to deworming, to treatment for parasites, to emergency care for sick or injured animals.

SUCCESS WITH SEAL BANS | We made outstanding progress with efforts to ban seal products in a number of countries.

In September 2006, the European Parliament adopted a resolution supporting a Europe-wide ban on all imports of seal-derived products. In October, the German



© IFAW/VINCENT DEWITT

A Practical Approach, Long-term Solutions

A lifelong love of the sea, an international business career, safaris in Africa and an encounter with a persuasive neighbor all conspired to bring David Metzler and IFAW together.

He's been a member of IFAW's Board of Directors since 2005, serving on the Finance and Institutional Advancement committees. As a former Executive Vice President and Chief Operations Officer for Colgate-Palmolive Company who traveled extensively in Africa, Asia and elsewhere, Mr Metzler believes that IFAW's pragmatic, international approach to conservation and animal welfare is key to its successes.

"IFAW is perhaps the foremost organization in the world that works for wildlife by combining local, feet-on-the-ground projects with international efforts to change laws and regulations," Mr. Metzler said.

In his view, IFAW's strengths lie in its teaching local people to conserve wildlife and habitats, providing hands-on emergency relief to animals in distress, collaborating with other nongovernmental organizations to win major victories, and supporting small projects that advance its overall mission.

Mr. Metzler said, "IFAW puts its considerable energies into developing realistic solutions to problems, not headline-grabbing stunts. From helping lobstermen in New England purchase trap line that is safer for whales to assisting community-based ecotourism and anti-poaching efforts near Kenya's Meru National Park, IFAW focuses on effective, long-term results."

Parliament unanimously voted on a motion to work towards a European ban on the importation of seal products. In January 2007, the Belgian Parliament adopted the first national ban on all seal and seal-derived products in the European Union. This followed a Recommendation passed by the Council of Europe in November urging its member states to ban seal-derived products.

Despite this success, Canadian hunters killed 224,745 harp seals during the annual commercial hunt and the government shows no signs of reducing the quota. IFAW's seal team documented the 2007 hunt in both the northern and southern parts of the Gulf of St. Lawrence, gathering footage of rifle hunting, cruelty and the effects of global warming on harp and hooded seals. IFAW also released a scientific report on the impact of global warming on ice conditions off Canada's east coast.

ANIMAL ACTION WEEK CELEBRATES SEALS | IFAW Animal Action Week continued to grow in its role as the world's largest animal welfare event.

In fiscal year 2007, more than 2 million young people participated in the education program in 14 countries where IFAW has offices and in many others thanks to the Internet. In the US alone, 750,000 pupils in 25,000 classrooms took part. In Russia, 300,000 children participated, along with 50,000 young people and adults in Canada and Australia, and 150,000 in China. Three thousand schools participated in the UK.

The theme was 'Making Waves for Seals' and materials included a 15-minute film and education pack. The week is also now promoted as 'Seven Days That Can Change the World — And a Year of Action for Animals' to emphasize that many of the activities continue throughout the year. As part of this year's campaign, more than 100,000 people signed a petition against commercial seal hunting.

The Web site generated enormous interest with many interactive activities including an exciting game *My Animal Island*, in which kids can adopt an island and learn about animals and habitat.

The Animal Action Awards highlighted individual achievements at prestigious ceremonies, including an event in the House of Lords in the UK. This year the awards are being expanded even further.



IFAW OFFICES WORLDWIDE



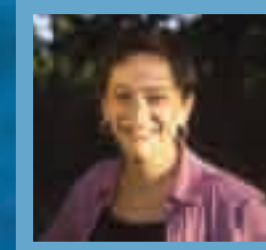
ASIA | GRACE GABRIEL, Director



ASIA PACIFIC | ERICA MARTIN, Director



JAPAN | NAOKO FUNAHASHI, Representative



LATIN AMERICA | BEATRIZ BUGEDA, Director



CANADA | OLIVIER BONNET, Director



EASTERN AFRICA | JAMES ISICHE, Director



MIDDLE EAST AND NORTH AFRICA | AZZEDINE T. DOWNES, Director



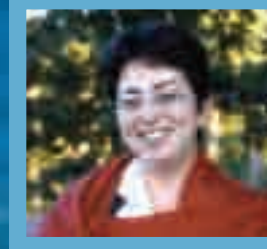
NETHERLANDS | MARCEL BERTSCH, Director



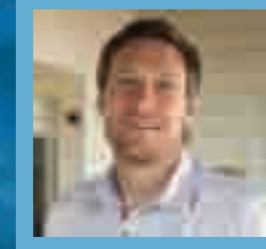
EUROPEAN UNION | LESLEY O'DONNELL, Director



FRANCE | FLORENCE PAQUET-CHAUSSON, Representative



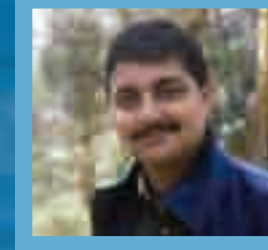
RUSSIA | DR. MARIA VORONTSOVA, Director



SOUTHERN AFRICA | JASON BELL-LEASK, Director



GERMANY | DR. RALF SONNTAG, Director



INDIA | VIVEK MENON, Representative



UNITED KINGDOM | ROBBIE MARSLAND, Director



UNITED STATES OF AMERICA | Washington, DC, Office
JEFFREY FLOCKEN, Director



LOCAL ACHIEVEMENTS AROUND THE WORLD

Through 16 offices, IFAW campaigns internationally and comes to the aid of animals on a local level all around the world. Following are highlights from these activities for the fiscal year 2007:

ASIA PACIFIC | IFAW provided emergency help for koalas injured in Australia's bushfires and for farm and companion animals affected by earthquakes and volcanic eruptions in Indonesia. Working with a local organization, IFAW produced a manual to assist veterinarians working on dog health issues in remote Australian communities.

The Asia Pacific office was instrumental in assisting South Pacific Island countries in concluding a historic agreement for whale and dolphin conservation.

CANADA | To promote global conservation, IFAW launched a book titled *Gaining Ground: In Pursuit of Ecological Sustainability* at an event on Parliament Hill in Ottawa. The book, co-authored by participants in an IFAW forum on the biodiversity crisis, includes essays from conservation, biology, economics and ethics experts.

IFAW continued to lobby for modern and effective legislation in Canada to protect animals from acts of cruelty. Canada's current cruelty laws have been in place since 1892 and are extremely difficult to enforce.

CHINA | In order to reduce the number of elephant-vehicle collisions, IFAW and the Sixiao Highway Management Bureau and Xishuangbanna National Nature Reserve Management Bureau erected billboards and traffic signs along Sixiao Highway, where most elephant-vehicle accidents occur.

Through IFAW's Beijing Raptor Rescue Center, 2,040 eagles, kestrels and other raptors were cared for and more than 50 percent have been released.



THROUGH IFAW'S MONITORING AND REPORTING OF ELEPHANT-VEHICLE COLLISIONS, LIFESAVING SIGNS HAVE BEEN PLACED ON SIXIAO HIGHWAY.

EASTERN AFRICA | More than 300 children in Kenya celebrated IFAW Animal Action Day in January with songs, poems and dances. It was the highlight of a four-month campaign involving an art competition, petition signing and education outreach programs in select schools in Nairobi and Mombasa that reached more than 200,000 students.

IFAW also launched a spirited campaign against proposals to lift Kenya's 1977 ban on sport hunting with the message, "We Hunt We Lose — Keep Them Alive!"

EUROPEAN UNION | The Belgian government's decision to prohibit seal-derived products marked a historic achievement for IFAW's seal campaign in the EU. At the European level in 2006, a large majority of the Members of the European Parliament signed a Declaration calling for an EU-wide ban on seal products.

FRANCE | To protest Canada's commercial seal hunt, IFAW organized an exhibition of an inflatable giant seal in front of the Eiffel Tower in Paris and collected signatures from concerned citizens and well-known stars, such as Sophie Marceau.

Song of the Whale docked at La Rochelle Harbor in April to raise awareness for whale conservation among students, the press and French dignitaries.



TWENTY-EIGHT LOCAL SCHOOLCHILDREN VISITED IFAW'S RESEARCH VESSEL WHEN IT WAS DOCKED IN LA ROCHELLE, FRANCE.

GERMANY | IFAW is working with eBay, the Internet marketer, to tighten regulations concerning ivory trade on the Web site. Since our collaboration began, the number of ivory offers on eBay Germany has declined by more than 98 percent.

As wolves return to Germany after an absence of 100 years, monitoring supported by IFAW donors has confirmed sightings of a new female in the state of Brandenburg, where it is hoped she will establish a pack.

INDIA | In Jammu and Kashmir, a northern Indian state, IFAW supported a population survey of endangered Tibetan antelope in the Chang-Chenmo Valley and the Karakoram Wildlife Sanctuary in Ladakh. This data will provide valuable information about these rare animals in India and help sharpen the focus on the population in China, which is threatened by poachers who seek their fine wool, known as shahtoosh.

JAPAN | IFAW worked to save critically endangered western gray whales, which have been killed by Japanese net whaling, as well as threatened by oil and gas development projects in Russia.

An IFAW symposium in Tokyo in March brought together leading humpback whale experts to show Japanese people that Japanese "scientific" whaling in the Antarctic Ocean will have a serious, negative effect on those whale populations.

LATIN AMERICA | A mobile clinic run jointly by IFAW and the University of Mexico (UNAM) treated a total of 909 dogs and cats, vaccinating 641, deworming 89, neutering 181 and spaying 45 in impoverished districts of Mexico City.

IFAW and more than 60 representatives of government, civil society and whale watching organizations from 13 countries participated in the Second International Whale Watching Workshop in April to strengthen support for this truly sustainable economic use of whales.

PHOTO: SHERRY TAYLOR



Investing in Animals' Futures

Beverly Klein—above with her cat Cascade, adopted from a rescue group—believes that humans should be guardians and stewards of the earth's flora and fauna because we are losing it very quickly. She began supporting IFAW in 1998 because of the international scope of our work, helping a variety of wildlife and domestic animals on a global basis. "IFAW goes in wherever they are needed, globally or nationally," she said, and that is what sets the organization apart from others.

Recently Ms. Klein generously invested in an IFAW Charitable Gift Annuity, with the unique option of deferring any return on her investment until she is 70. She said, "I wanted stability in my investment and I know it will help animals down the road." Her prime concern is not income right now but having, "absolute certainty that I am planning for animals in the future. I can start drawing payments later on if I need them, and when I pass away I know the rest of the money will be there for animals," Ms. Klein said.

"I would like my grandchildren and great-grandchildren to have wildlife in their world," she added. Ms. Klein's deferred Charitable Gift Annuity is truly an investment in the future.



THE IFAW/UNAM MOBILE CLINIC PROVIDED CARE TO DOGS IN THE NEIGHBORHOOD OF IZTACALA.



IFAW SPONSORED A SERIES OF TRAINING WORKSHOPS IN LIBYA, YEMEN, SYRIA, AND JORDAN TO HELP OFFICIALS COMBAT LARGE-SCALE WILDLIFE SMUGGLING FROM AFRICA.

MIDDLE EAST | With the opening of a new office in Dubai, IFAW has an increased presence in the Middle East. This is a main crossroad for smuggling illegal wildlife products out of Africa, so strengthening enforcement activities is critical to stopping global trade.

NETHERLANDS | Working in collaboration with Rapp Collins/DDB Group, IFAW generated a powerful ad campaign using letters in animals' names to represent their fate. The campaign, called *Will Only Words Remain*, rolled out in the Netherlands in poster ads,



billboards, TV, radio and cinema and was used successfully by IFAW international offices on Internet micro sites and in mailings.

RUSSIA | To monitor the influence of noise on the last 120 western gray whales, IFAW's Russia office sent observers on the tall ship *Nadezhda* to monitor construction of an oil pipeline off the coast of Sakhalin Island. Thanks to IFAW, the Sakhalin Energy company reduced industrial noise and sea traffic in this critically important feeding ground.

SOUTHERN AFRICA | In September, IFAW's Think Twice campaign kicked off in South Africa to urge tourists not to bring home souvenirs made from endangered and threatened species. The campaign focused on German, Dutch and British visitors who frequently travel to South Africa on safari.

UNITED KINGDOM | "Operation Charm," a joint campaign by IFAW and London Metropolitan Police, was launched to tackle trade in endangered species. Successful lobbying of the UK government on whaling helped recruit five new pro-conservation countries to the International Whaling Commission.

Other successes included a government announcement that it would push for a European Union-wide seal products ban, and a poll showing continued support for the ban on hunting with dogs, which has been in place for two years.

UNITED STATES | IFAW worked with the US Congress to encourage legislation that would amend the Marine Mammal Protection Act to prohibit the importation of polar bear "trophy" hides and heads from Canada.

IFAW also worked with lobstermen and fishermen to facilitate compliance with new federal rules protecting the highly imperiled northern right whale from entanglement in fishing gear, while pushing the Bush administration to finalize regulations to decrease the likelihood of fatal ship collisions with whales.

EXCELLENCE IN GOVERNANCE AND MANAGEMENT SUPPORTS GAINS IN ANIMAL WELFARE

Donors demonstrated their support for IFAW's practical approach to animal welfare with contributions totaling US\$107m in fiscal year 2007. Qualifying for US-based Charity Navigator's highest 4-star rating and meeting all 20 standards for charities promulgated by the Better Business Bureau have provided IFAW with significant public recognition for excellence in governance and management. In the UK, IFAW has also been recognized as a "top rated" charity by Intelligent Giving. Together, IFAW's board and management team are committed to maintaining this donor confidence and public recognition by ensuring the highest standards of transparency and integrity in the stewardship of contributions.

Through the implementation of strategic plans, efficient systems and global administration strategies, IFAW maximizes the use of available resources to meet priority needs of animals and habitats. To further increase efficiency, in 2007 IFAW adopted a new global banking platform that has reduced fees and increased earnings. We continue to foster partnerships with banks, and fund and risk managers worldwide to ensure innovative mechanisms to put resources in place where needed, when needed, demonstrating IFAW's unique capacity to respond to emergency and catastrophic events.

All IFAW affiliates are audited annually by PricewaterhouseCoopers to ensure accurate financial statements and effective internal controls. IFAW is pleased to report another year with no audit deficiencies.

IFAW management recognizes that donors have limited resources and many philanthropic choices. In choosing IFAW, donors can be assured that sound business practices form the platform for effective campaigning and real wins for animals and people alike.

Again this year, IFAW is grateful to all donors, with special recognition to several who left substantial bequests to support IFAW's mission of "a better world for animals and people." Their generosity is reflected in the combined financial statements and will have a positive impact on animal welfare and habitat protection for years to come.

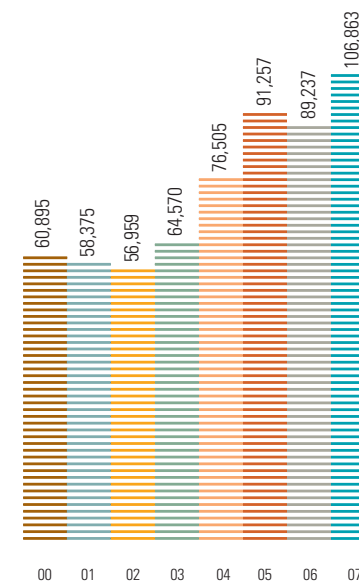
If you have not received IFAW's complete audited financial statements, you may obtain them by writing to: IFAW, Membership Correspondence, 290 Summer Street, Yarmouth Port, MA 02675, or to the regional office listed on the back cover.

IFAW COMBINED FUNCTIONAL ALLOCATION OF EXPENSES |

ENTITY	LOCATION	Year Ended June 30, 2007		Year Ended June 30, 2006	
		PROGRAM AND INSTITUTIONAL COSTS	FUNDRAISING COSTS	PROGRAM AND INSTITUTIONAL COSTS	FUNDRAISING COSTS
International Fund for Animal Welfare, Inc.	United States	86.5%	13.5%	87.4%	12.6%
International Fund for Animal Welfare	United Kingdom	71.6%	28.4%	71.6%	28.4%
IFAW Charitable Trust	United Kingdom	77.4%	22.6%	73.4%	26.6%
International Fund for Animal Welfare Inc. / Fonds international pour la protection des animaux Inc.	Canada	83.7%	16.3%	82.3%	17.7%
Stichting IFAW — Internationaal Dierenfonds (Nederland)	The Netherlands	81.3%	18.7%	78.9%	21.1%
IFAW Internationaler Tierschutz-Fonds gGmbH	Germany	93.5%	6.5%	95.2%	4.8%
International Fund for Animal Welfare (France)	France	88.8%	11.2%	83.7%	16.3%
International Fund for Animal Welfare (Australia) Pty Limited	Australia	88.2%	11.8%	89.6%	10.4%
International Fund for Animal Welfare (association incorporated under section 21)	South Africa	81.3%	18.7%	92.0%	8.0%

Functional allocation computations are made based on financial results that are prepared in accordance with local country generally accepted accounting principles. Institutional costs include general and administrative expenses to support IFAW's work, which averaged 10% in the years ended June 30, 2007 and 2006.

FINANCIAL HISTORY | Total Income in Thousands, USD

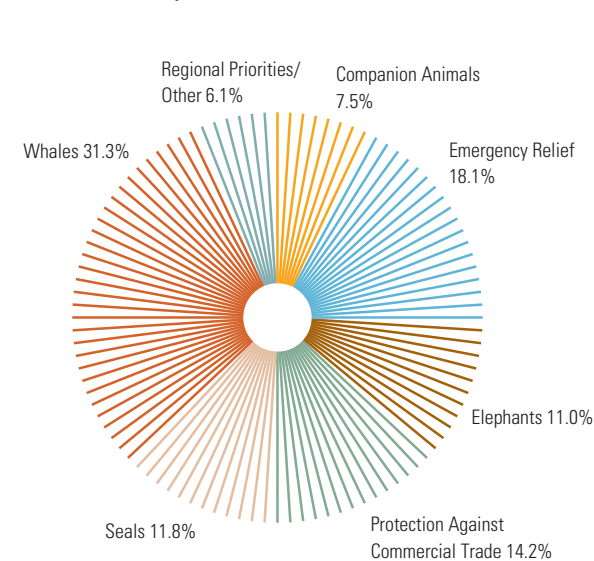


IFAW COMBINED FINANCIAL STATEMENTS, UNAUDITED* | For the Years Ended June 30, 2007 & 2006, in Thousands of US Dollars

	2007	2006
ASSETS		
Cash & cash equivalents	\$ 25,063	\$ 20,021
Prepaid expenses & other current assets	12,857	7,668
Fixed assets, net	22,711	15,140
Investments	40,937	32,738
Total assets	\$ 101,568	\$ 75,567
LIABILITIES		
Accounts payable & other current liabilities	10,887	10,801
Notes payable	15,048	1,366
Total liabilities	25,935	12,167
Net assets	75,633	63,400
Total liabilities & net assets	\$ 101,568	\$ 75,567
PUBLIC SUPPORT & REVENUE		
Supporter contributions	\$ 80,423	\$ 76,821
Bequests	24,459	9,642
Other income	6,185	2,774
Total public support & revenue	111,067	89,237
EXPENSES		
Program & operating expenses	101,543	88,246
Total expenses	101,543	88,246
Excess (deficit) of public support & revenue over expenses	\$ 9,524	\$ 991

*Financial statements for each of the IFAW entities are prepared in accordance with local country accounting principles and are audited separately. The combined financial statements are prepared on a basis that approximates accounting principles used in the United States of America.
** Other current assets and net assets have been reduced by \$1,047 to record an asset reserve posted to fiscal year 2004 in IFAW Germany.

DIRECT EXPENSES BY STRATEGIC PRIORITY AREA | Fiscal Year 2007



WORLDWIDE CONTRIBUTING SUPPORTERS

IFAW is grateful for the generosity of the supporters who make up our *Circle Club*, *Champions for Animals*, *Future for Animals Society* and the *Pet Fund*. These outstanding contributors stand by us each time we save an elephant family from poachers, rush to rescue cats and dogs from disasters, free an orphaned bear, or save an injured animal's life. IFAW also extends heartfelt thanks to donors who help us protect animals through bequests, charitable gift annuities and other planned gifts, ensuring continued protection for animals for years to come. We would like to recognize the following donors who made generous gifts to IFAW between July 1, 2006, and June 30, 2007.



CIRCLE CLUB

IFAW gratefully recognizes the individuals listed below for their leadership gifts to our animal welfare efforts. This significant worldwide support makes long-lasting achievements possible through science, law, politics, economics, public education and hands-on aid. Thank you, *Circle Club* donors, for your continued support.

CHAIRMAN

US\$100,000 and above
Mr. William N. Vaughan

PRESIDENT

US\$50,000 to US\$99,999
Pettus-Crowe Foundation

AMBASSADOR

US\$25,000 to US\$49,999
Anonymous
Ms. Irene Geller
Frau Charlotte Ristau
Mrs. E. S. Thorne

FOUNDER

US\$10,000 to US\$24,999
Sandra Atlas Bass
Bidvest Chairman's Fund Trust
Mr. & Mrs. David Bundy
Mr. D. Butcher
Dennis Gould Foundation
S. L. Edwards
The Patronax Foundation
Gifford Family Foundation
Ms. Elaine Gismondi
Mr. Michael Graham
Dr. Phyllis A. Huene
Michael Hunter
Mevr. E. J. Kindermann
Beverly Klein
Miss Irene Linsley
Mr. & Mrs. Chris Mentch
Mr. & Mrs. David Metzler
Miss E. M. Sage Charitable Trust
Nashua — Cape Town
Ms. Elizabeth Oreck & Mr. Gavin Polone
The Overbrook Foundation
Minou & Peter Palandjian
Charles & Jeannette Preuss
Reine Rush
Mrs. S. Sokolowski
Mr. Cyrus W. Spurlino
Mr. Ben Stein & Ms. Alexandra Denman
Firma Friedrich Steinle GmbH
Donald & Delma Taylor
The Bay Tree Charitable Trust
Goran & Ivana Visnjic

PARTNER

US\$5,000 to US\$9,999
Alexander Stone Foundation
Mrs. M. Bach
Ms. Linda L. Beggs
Frau Marion Blasing
Ms. Lynne Cooper Harvey
Delamayne Foundation
Mr. M. Dunbar
Entertainment Industry Foundation
Ms. Susan Gudaitis
Frau Else Haas
Mr. Philippe Hammer
The Hasluck Charitable Trust
Mr. William Hodgins
Mr. Gilbert André Jauffret
Mme Henriette Jelinek
Herr Theodor Kohl

Ms. Linda R. Lee
Ms. Sandy Lerner
Frau Marianne Meyer
Miss Newton
Mr. Raymond Niendorf
Mr. Gilman Ordway
Mrs. A. Osborne-Doyle
Mr. Thomas C. Ramey
Mrs. Jean Barger Rice
The Harry Schwartz Foundation
Singing Field Foundation
Dr. Kumara Sidhartha
Mabel Story
Ms. Margareta Taylor
Mr. & Mrs. David Thede
Ms. Irene Trautman
Mitch & Renee Wagner
Mrs. Rosamond G. Walbert

PATRON

US\$2,500 to US\$4,999
Frau Rosemarie Allgaier
Anonymous
Mrs. R. H. Arvidsson
Mrs. Karen Bevilaqua
Mrs. Lois D. Brounell
Dr. Manu Chandaria
Miss P. Chandler
Dr. Charles F. Colao
Mrs. U. Cookson
Anonymous
Mrs. C. C. Culver
Ms. Karen De Benedictis
Mrs. Robyn Edson
J. M. Fitzherbert
Mrs. Jane Scott Garnett
Ms. Adelaide P. Gomer
Mrs. C. G. R. Green
Sherleen Hervey
Mrs. Iris Higgins
Ms. Judith E. Hittman
Frau Franziska Huber
Frau Maria Kerpen
Ms. Jeannie Kilgour
Kinnickinnic Realty Co.
Herr Dieter Klein
Hans & Ruth Koch
John & Diana Lamb
Frau Arina Lauffs
Frau Ute Leicht
Jane Livesey
Ms. Mary Ann E. Mahoney
Mr. & Mrs. Kevin McCaffrey
Alois and Shirley Meitz
Mr. Dmitry Moskwin
Mr. C. Murdoch
Mr. C. Murdoch
Mr. Thomas P. O'Neill III
Ario & Jean L. Pardee
Maria & Wolfgang Petersen
Mr. Gilbert Renoux
Ms. Alice K. Robinson
Mrs. Rhoda Sayer
Frau Lotte Spohn-Freitag
Ms. Victoria Stack
The Miller Foundation
Andrea & Greg Thomajan
Herr Stefan Thurn
Mrs. Todd
Vanguard Charitable Endowment Program
Mrs. A. Wadsworth

Ms. Courtney Walker
Mr. James C. Waugh
Mr. Li Wensheng
The Whale Trail
Robyn & John Wilkins
Nevin Williams
Mrs. R. Woolvett
T. G. Wright
Mr. R. Yorke

FRIEND

US\$1,000 to US\$2,499
Animal Aid and Advice
Ms. Sarah M. Amell
Anonymous (9)
Mrs. A. Arthurs
Marlow & Bobbie Baar
Herr Lambert Baeumer
Ms. Janet A. Baines
Ms. Anne C. Barasch
Mrs. J. M. Barnes
Ms. Elisabeth Barrer
Mr. Matt Barrett
Mr. K. A. Bate
Mr. Frederick Bear
Susan & Kim Benston
Frau Brigitte Berger
Miss E. C. Bickell
Mr. P. Blackett
Mr. Alan E. Boles, Jr.
Trevor Brown
Mrs. Glenice Burford
Frau Anneliese Burian
Ms. Elizabeth Bynum
Ms. Lauren J. Canno
Ms. Maria S. Cantwell
Michelle Carr
Ansel B. & Anne Chaplin
Ms. Linda J. Clark
Prof. & Mrs. Nino B. Cocchiarella
Ms. Patricia L. Connors
Mr. Brant Cooper
Mike Cote & Jim Silverman
Dr A. Couch
Ms. Morag E. Croft
Ms. Harriet Crosby
Mr. & Mrs. Shiva Das
David and Ellie Renwick
Mr. Robert Davis
Mr. Leon Dawes
Delves Charitable Trust
Mr. Phil DeMuth
Mme Jeanine Deshayes
Frau Gudrun Dierdt
Mr. & Mrs. Giosue J. DiMassa
Mr. Michael Dimond
Mr. Robert G. Docters
Mr. & Mrs. Gerald P. Dodson
Mrs. A. Dunbar
Mr. David W. Dunlop
Miss M. Eagle
Norman Errington
Ms. Annette E. Escojido
Mr. William R. Eubanks & Dabney Coors
Mr. Fred Feenstra
Fidelity Charitable Gift Fund
Miss R. Forsyth
Frau Petra Frank-Diebels
Mrs. Barbara Fried
Josip Fuduric Handelsunternehmen e.K.
Claudia Gaglione
Maggie & Sifredo Galdamez
Mrs. Judith H. Galeana
Ms. Kathy Gauthier
Georg Vetter GmbH & Co.
Dr. & Mrs. M. J. Gerard
Ms. Tara Gildea
Isolde-Glas-Stiftung
Ms. Linda K. Gohlke
Peter Gomm
Ms. Linda M. Gordon & Mr. Barshinger
The Dick Goss Family Charitable Trust

Susanne Greenhow
The Henry H. & Laurel K. Greer Foundation
Mr. Frank Griffin
John N. Griffiths
Pilarczyk Media Groep
Mevr. E.L. Haantjes
Maureen Hackett, M.D.
Frau Christa Haindl
Miss Margaret Halbert
Mrs. A. D. Hamleton
Dean Hampton
Miss E. D. Hargreaves Charitable Trust
Mevr. C. C. Hartmans
Virginia Hawley
Ms. Dawn Hayes
Mrs. Deborah I. Haynes
Ms. Lauren Haynie
Marylou & Paul Hecht
Mevr. A. E. M. M. Held-Rolloos
Ms. E. M. Henderson
Ms. Martha Hertelendy
Mrs. Doreen F. Heseltine
Mr. K. L. Hindson
Ron & Cheryl Howard Foundation
May M. Howie
Mrs. J. Hukins
Mrs. S. Hunkin
Mr. M. I. Ionescu
Melanie Isbister
Miss Barbara M. James
Mrs. Nancy Hearne Johnson
Kapoor Investments Ltd.
Laura Keller
Sr Mary Kenchington OSB.
Ms. Mary C. Kennedy
Frau Monika Kersting
Mrs. J. Kilby
Miss M. A. Kingma
Reinhard Klumpen
Mr. Douglas Kuelbs
Mr. Joel Lamstein
Mr. J. A. Lancaster
Cindy Landon Living Trust
Mr. Peter Laskas
Les Marguerites Trust
Mr. & Mrs. Kenneth Levine
Ms. Judith E. Levy
Ms. Kit Lilly & Mr. Tony Betancourt
Mr. Michael J. Lindley
Mrs. D. Littlewood
Alan Lomer
Marquis George MacDonald Foundation, Inc.
James H. Mahoney, Jr.
Dhr. H. H. J. C. Maillie
The Henry M. Margolis Foundation
Ms. Ailene F. Martin
Jennifer & Lowell McAdam
Mevr. E. Mees
Mrs. Rachel L. Mellon
Mr. John L. Metro
Mr. & Mrs. Victor M. Milligan
Mr. Spyro Mitrokostas
Ms J. E. Moller
Mevr. B. Moltzer
Carol Moore
Mr. Muir
Mevr. M. C. C. Mulder
Mr. W. R. Norman
Miss Menna Owen
The International Society of Palm Beach
Linda Parish
Mr. & Mrs. B. Paterson
Mr. William Payden
Ms. Joan Payden
Ms. Pamela M. Pearson
Mrs. J. Pedder
Mr. & Mrs. Robert T. Perkins
Mr. Clarence Petty
Sara Polinsky
Dhr. O. Popp

Ms. Melanie Powers
Frau Christina Primas
Mr. & Mrs. Harold Prince
Dhr. A. N. K. Quist
Mrs. J. Ramsey
Miss Margaret L. Ranson
Mrs. J. E. Rayner
Ms. Audrey A. Recht
Ms. Heather Reed
L. Reisz
Ms. Rosemarie Resnik
Ms Dawn Reynolds
Ms. Heather Richman
Ms. Leslie Roach
Herr Friedrich Roderfeld
Mr. J. H. Roderick
Mrs. P. Roeder
Mrs. Chester Rogal
Ms. Katherine Rohrbacher
Ms. Claire Rosenzweig
Mr. Michael H. Ruehr & Ms. Susan L. Bruner
Mrs. Wendy Sanderson
Mr. Dan Schaub
Dhr. H. Schokker
Judith W. Schrafft
Tree of Life Foundation International
Mr. & Mrs. Peter M. Schwab
Ms. Marla Schwartz
Mr. & Mrs. Kevin Shields
Miss T. A. Shires
Ms. Julie C. Shumer
Dr. Sarjit K. Siddoo
Ms. Elizabeth B. Simon
Ms. Carol A. Slijpertz
Mrs. M. E. Smith
Mr. R. L. Staples
Ms. Bunnie P. Stevens
Mrs. Carol H. Stewart
Paul Tensen Stichting
Miss D. B. Stokes
Mrs. Iris Stolworthy
Ms. Caroline E. Sutton
Ms. Paula M. Szortyka
Mrs. R. Thomas
Mrs. A. E. Thomason
Miss D. Thompson
Mrs. Sarah A. Thompson
Mrs. Sheila Thomson
Ms Toms
Angelita Tranka
Frau Emmy Trau
Lee Tuan
Cathy & John Turney
Mr. Michael Vacchione & Mr. Kevin Poole
Mevr. Van Dijk
Mevrouw W.J. vd Berg
Ms. Gwenn Vicker
Dhr. M. J. Viereger
Mrs. J. B. von Bothmer
Frau Jutta von Münchow
Dr. Carrie L. Walters
Macquarie Bank Foundation
Mrs. M. Ward
Hannah D. Wassermann
Mrs. D. Waugh
Ms. G Weaver
Herr Volker Wedenig
E. Wells
Elizabeth Whelan
Ms. Valerie White
Wilber National Bank
Mr. & Mrs. Jim Williamson
Mrs. P. Winch
Miss D. E. Windebank
Mr. M. Winkler
Ms. June Woodward
Mrs. V. Woolcombe
Allan and Margaret Norfolk
Sarah & Johnathan Wry
Ms. Amy Wyss
Mr. & Mrs. Brace Young
Ms. A Yuncken
Ambassador Robert Zoellick
Ms. Marion Zola & Mr. Sam Urcis

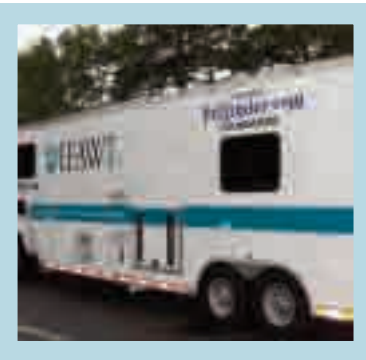
FUTURE FOR ANIMALS SOCIETY

IFAW honors generous supporters who pledge bequests or make other planned gifts with membership in our *Future for Animals Society*. By establishing charitable gift annuities or naming IFAW in their wills, donors can be sure their concern for animals will continue beyond their lifetimes through IFAW's worldwide programs.

BEQUESTS

Joel & Lenore Abels
Phyllis Abraham
Dennis Eric Adams
Dennis Eric Adams
Gordon Robert Adams
Joyce Doreen Adams
Peter Mercer Addey
Barbara Elizabeth Lilian Alber
Elaine Mary Aldridge
Gwendoline Elizabeth Alford
William Henry Allcock
Philip Allebone
Frances Evelyn Allen
Joyce Allen
Marjorie Frances Ambrose
Mevrouw A. M. Amorison Ret.
Harry Malcolm Angrove
Joan Edith Appleford
Jeanne Dorothy Appleton
Genevieve Arcuri
Murial Ard
Pauline Rita Ariotti
Janet Clara Armson
Freda Helen Marie Arnold
Judith Ann Ashmore
Nora Astin
Kathleen Atkinson
David Sidney John Auton
Phyllis Joan Ayton
Mevrouw J.G. Baars-Heuvelink
Dr. N. Baart
Stanley Badhams
Cecile Joan Whyte Baldwin
Joan Esther Florence Baldwin
Annetta Ball
Donna O'Connor Bambery
Pearl Gabrielle Barley
Nellie Florence Barnatt
Daisy Alice Barnes
Leslie Arthur Barnes
Pegasus B. Barnum
Bryn Bartlett
Lily Bass
Irene May Bassett
Grace Lily Batham
Charles L. Baumbrock
Elsie Dorothy Baxter
Jessica Mabel Anne Bearpark
Vera Louise Beaufoy
Mavis Bell
William Stanley Bell
Dorothy Bennett
Stanley Arthur Bennett
Avis Grace Muriel Benson
Beryl Beveridge
Douglas William Bewley
Dorothy Winifred Birch
John Lionel Bird
Marjorie Emma Bird
Eileen Eva Birtles
Joan Rosemary Bishop
Myra Margaret Florence Bishop
Ralph Albert Bishop
Edith Margaret Black
Barbara Jayne Blackburn
Molly Blackburn
Elizabeth Harriet Blades
Kathleen Mary Blagdon
Frederick William Blake

Marjorie Verona Bland
Susan Doreen Blue
Isabel Margaret Bond
George Ernest Booth
Ruth C. Born
Peter Borrell
Ethel Bowen
William Desmond Bowen
Margaret Bower
Edith Amy Boyce
Helen Audrey Berenice Bradley
James Thomas Bradshaw
Michael Jack Bramhill
Colette Brandstetter
Doris Ione Brecknell
Kathleen Brennan
Michael John Brewer
Edward Kenneth Brewis
Eleanor R. Brierley
Barbara Kathleen Bright
Brian Arthur George Brockwell
Irene Emily Brogan
Evelyn Joyce Bromley
Roy Brook
C. Brouwer
Ethel Doreen Budd
Dorothy Jean Vanstone Burford
Georgine K. Burkle
Edna May Butler
Barbara Butterell
John T Caldwell
Evelyn Doreen Campbell
Marie Dorothy Campbell
Edith Maud Cannon
Daphne Linda Cardew
D. Eva Carideo
Joan Carr
Doris Ginette Marie Carter
Kathleen Alice Carter
Kathleen Alice Carter
Joan Cartwright
Joan Cecil
Virginia Celmer
Hilda Chalk
Alice Lilian Chapman
Joyce Charles
E. Chourlianis
Clara Annie Nellie Christie
Ada Muriel Church
Josephine E. Ciak
Harry P. Clappier
Ella Amina Clarke
Margaret Clarke
J. W. Claudius-Karrenbeld
Lucila Clavijo
Maurice Clifford
Gordon John Coates
Anthony David Cobley
Isidore L. Cohen
Marjorie Elizabeth Collins
Brian James Connor
June Mary Conway
Audrey Joy Cook
John Leonard Cook
Robert Arthur Cooper
Kathleen Marie Cornfield
Mevrouw C. E. Coulander
Joan Margaret Coultas
Eva Margaret Cran



Working Together Strengthens Mobile Rescue
Following Hurricane Katrina in 2005, IFAW and many other organizations rushed to rescue animals, and often people, stranded by floodwaters. As part of that rescue, IFAW and Petfinder.com Foundation set up a database for lost pets.

"The Petfinder.com Foundation selected IFAW to partner with because we respected IFAW's emergency relief experience and their willingness to work with other groups involved in the disaster," explained the Foundation's Executive Director Nancy McKenney. "We wanted to be prepared to assist animals at the next large-scale disaster." The Petfinder.com Foundation knew of the perfect way to accomplish this and donated an amazing vehicle to IFAW.

The Chevy truck pulls a 36-foot custom trailer designed to haul up to 50 companion animals. The completely self-contained living space fits the needs for two to three rescuers. Also, the cargo bay is easily converted to a work space and the trailer has all of the electrical and communications equipment necessary for self-sufficiency in the field. This will enable easy input of data on rescued animals to help reunite displaced owners with their pets later on.

IFAW thanks Petfinder.com Foundation for their generosity in furthering our efforts to save more animals during disasters.

Jeanne Mary Croll
Constance Margaret Grace Crome
Minnie Florence Crossley
Barbara Crosswaite
Aileen Doull Cummings
Mevrouw H.C. Dahm-Compeer
Elizabeth Emily Anne Daunton
Edith Davenport
Beatrice Ivy Lilian Davis
Dhr. W.J.G. de Jong
M. C. de Later
Bessie Alexander De Pascali
Mevrouw De Pestors
J. B. de Swart
Mona Louise Nancy Dellar
Mevrouw I. G. den Dulk-Blankevoort

Janet Denny
Dhr. J. Deurloo
Anne Dickinson
Marjorie Dickinson
Irene Kate Dimmock
Violet Helen Dixon Charitable Trust
Susan Elizabeth Dominey
Jessie Elizabeth Dorsett
Dora Stella Doughy
Joan Mary Dowell
Elizabeth Downes
Letha Duffy
Willette Y. Duval
Nellie Earnshaw
Kenneth Eastick
Judith Amy Eden
Mabel Eva Newton Edwards
Mary Patterson Edwards
Winifred May Edwards
Norman Richard Elkington
Mavis Ruth Elliott
Kathleen Nora Ellison
Felicia Rosemary Elwell
J. E. Emerson
Bruno Engelke
Diane J. Evans
Anne Ewan
Margaret Falkenbach
Agnes Elizabeth Farran
Edith Eleanor Thelma Fawbert
E. Feering
Mary Fellows
Muriel Joyce Fidgett
Patrick Edgar Fisher
Betty Joan Flanagan
Marianne Fleith
Lenore Fletcher
Cicely Phoebe Isobel Foreman
Jean Kelly Forrester
David Roy Foskett
Vera Joan Fossey
Louise Marie Fox
Helene Florence Ella Francis
Victor James Francis
Mrs M Frankel
I Franklin
Marjorie Frazer
Florence E. Frederick
Giovanna Freeman
Doris Winifred Freemantle
Margaret Claire French
Joycelene Margaret Froggatt
Dorothy Miriam Annie Fynn
Laurell Gaines
June Galpin
Grace Lillian Garner
Mevrouw W.M. Garstenveld-de Jong
J.W.K. Gastelaars-Straatman
Philip Ferdinand Gates
Cyrilla Rosemary Gell
Hilda George
O. Gibbs
Mary Ann Gibson
Jo Gilbert
J. Gillespie
Mevrouw G. Glimmerveen-Koppenol
Dorothea Glover
Heather Drury Glynn-Jones
Marjorie Godby
Kenneth Roy James
Goldsmith
Phyllis Winifred Kathleen Goodban
Marjorie Gwendoline Goodwin
Patricia Sarah Gostling
Sheila Graham
Amy Grayson
Dora Wilhelmina Green
Jean Ada Green
Joyce Green

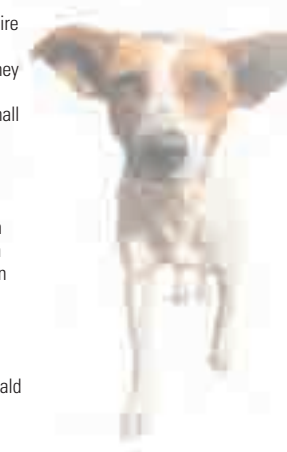
Nadine Beryl Greenhill
Marite Greiselis
Elizabeth Griffin
Elsie May Griffin
Kenneth George Griffiths
Marianne Ingeborg Griffiths
Stanley Charles Grigg
Margareta Gross
Barbara Mary Gunn
Mevrouw F. Gunnink
Ingeborg Günther
Dhr. J. Hagenaar
Carol Marjorie Hagley
Margaretha Valerie Maria Haissig
Corinne Hale
Joan Kathleen Hall
Joan Kathleen Hall
Joceline Ruth Hall
Norman Frederick Hall
Ivy Hampton
Alfred Edward Hancock
Peter Ward Hanna (Trust)
Sarah Elizabeth Hanson
Audrey May Hare
William Arthur Harrington
Jessie Harris
June Mary Harry
Marion Hart
Mevrouw J. J. D. Hartensveld-Musters
Pauline Hartford
A. A. Hartsuiker
Nellie Florence Alice Nora Haslett
Joan Barbara Hawley
Lily Hawthorn
Mary Jane Hawthorne
Ada Hay
Barry Hayes
Doreen Winifred Hazell
Yvonne Patricia Hearn
Alison Burton Heaven
Luella Hemmingson
Stella Henion
Ruth M. Henn
Beryl Parkin Hewitt
Nesta Heywood
Mary Yvonne Hichen
Maureen Louisa Hill
Roma Maud Winifrede Hill
Vashti Elizabeth Hill
Winifred Dorothy Hill
Norma Rose Hilton
Grace Florence Hirst
Edith Margaret Hohl
John William Holdaway
Denise Beatrice Romola Holmes
Maurice Holmes
Lucienne Victoire Holt
Maria Hölzl
Kathleen Elizabeth Hounsell
Kathleen Joan Houston
Elvira Hovan
Edna Howson
Kitty Hughes
Margaret Annie Hulme
Hilda Benita Hungerford
Yvonne E. Ide
Ruth Inledon
Carmen Ingham
Ingrid Iozzia
Gertraude Isenburg
Helen Mary Jackson
Edward Walter James
Kathleen Ivy James
Phyllis Dora Jeffery
Anthony Edwin Jenkins
Desmond Abner Jenkins
Elizabeth Jenkinson
Hugh Sittang Johnson
Mary Johnson
Margaret Anne Johnstone

George Dallath Jones
Myrtle Davinia Jones
Evy Jordan
Joyce Anne Justus
Janis Kay
William Percy Kean
Mary Houseman Keighley
Lilian Ada Kendall
Bernice Kenworthy
Louise Ogilvie Russell Keppel-Powis
Juliana Kickert
Valerie Frances Killick
Mary Kimberley
Dorothy Alexandra Kingsley
Margaret Alice Kingston
Sylvia Joyce Kirk
Adelaide S. Kirkbride
Margaret Rose Kirkland
Marian Knowles
George Koch
Mevrouw A. Kooijman-Buket
Meneer Th.I. Koot
Carmel June Mary Laight
Joyce Mildred Lambert
Allan Donald Lamont
Mevrouw S.J. Langewisch-de Vries
Margaret Joan Large
Nita Lavaggi
Miriam Louise Laverick
G. Laycock
Susan Josephine Laycock
M. D. Layton
Alice E. Lazoff
Gladys Le Jeune Tsuji
Eileen Joyce Lea
Isabel Ethel Leckey
G. Leffmann
Herbert Colin Lendrum
Alice Miriam Leslie
Edith Lewandowski
Hilda Grace Lewis
Margaret Williams Lewis
Mildred Lillis
Karen E. Linden
Elfriede Lindow
Lilian Gertrude Lines
Ruby E Little
Mary D Lloyd
James G Lobban
Sheila Alice Loddy
Dennis Leslie Edgar Lomax
Gloria Elizabeth Long
Gertrude Margaret Ena Longley
Harold Lowe
Margaret Jean Lowe
Stella Lumsden
Pamela Ellen Luxton
Alice Ida Mabbett
Barbara MacFarlane
Craig McFarlane
James Bell Mackie
Barbara Macmillan
Dorothy M. MacNeil
Gladys Winifred Maguire
Linda S. Makari
Diane Margaret Maloney
J. Markhof
Janet McArthur Marshall
John Marshall
John Birkett Martin
Joyce Martin
Mary Heather Martin
Rosalind Ritson Martin
Audrey Ninetta Mason
Ms. Ellen M. Matheson
Alice Maude
Beverly Mauldin
Nancy Mayer
Beatrice McCaffrey
Irene Elizabeth McDonald
Marjorie McGrath
K. H. McKay

Barbara Mary Ralph Mckears
James McKenzie
Margaret Ann McLennan
Barbara Constance Mead
Henry Cecil Measor
Mevrouw Meijerink
Harry Melton
Jean Merritt
Lilian Metcalfe
E. A. Metherell
Joan Clara Mew
Jola Meyer
Dorothy Michael
Eileen Beryl Middleton
Olive Mary Middleton
Joan Midwinter
Daphne Denise Robson Miles
Edna Mills
Isobel Mills
Hilda Minnett
Birdie Alice Mitchell
James Frederick Mitchell
Elizabeth E. Moch
Doris H. Moore
Gerald Joseph Morecroft
Irene Lilian Morgan
Clara Adelaide Morris
Dorothy Violet Morris
James Morton
George William Mould
Hazel Marjorie Mountain
Clarissa Mabel Mountfort
Elizabeth Mudd
Isabella Helen Mary Muir
Mrs M. Munro
Kevin Dominic Patrick Murtagh
Geraldine Nelson
Grace Kathleen Nelson
Ingeborg K. Nelson
Gerald Nevill
Gweneth M. New
Beverley Newmaster
Norman John Leslie Newsome
Anthony John Nightingale
Dhr. G. Nijland
A. J. Nivard
Susan Niven
Joyce Florence Linda Noel-cox
Phyllis Ruby Irene Norris
Phyllis Clara O'Farrell
Susan Jane Oliver
Peter Page
Nettie Amy Papworth
Glenda Mary Parry-Williams
Iris Parsons
Edith Partis
Phyllis Mary Pascoe
Florence Mary Patterson
Nevelyn Patton
Muriel Anne Pearson
Pamela K. Pedrucci

Ralph G. Peiscope-Grau
Winifred May Pellow
Edith Mary Pemberton
Lionel Francis Penfound
Olga Perewersew
Patricia Mary Perks
Marion Dorothy Perraton
Harold Peterson
Kathy A. Petteys
Kathleen Marguerite Glover Philp
John Maurice Pickard
Norma Mary Pickering
Faith S. Pierce
Leslie Piggin
Irene Emily Pike
Denise Ethel Pilbeam
Betty Mary Piper
Ruth L. Pitman
Shiavax Jehangir Pochkhanawala
Anna Postel
Ruth Patricia June Pottesman
Lily Preece
Ethel Preston
Betsy A. Price
Edna Price
Mavis Price
Patricia Quinn
Mary Rankin
Gladys Elizabeth Raphael
Renee Ratcliffe
Elizabeth Rathbone
Anne T. Rauchberger
Diana Joan Raven
Sheila Kathleen Read
Dorothea Mary Reid
Franziska Reindl
Dhr. B.H.W. Reule
A.F.M. Rhead
Birgitt E. Rhodius
Louise Richards
Louise Richards
Olive Margaret Richardson
Valerie Clare Riches
Rosemary Ann Rigo
Katie Alice Ringrose
Doris Rivera
Lucy Robertson
Violet Edith Robinson
Antony Edmund Roche
Barbara Joan Rodgers
Gillian Rolf
Sylvia Muriel Rollinson
Mary Rose
William Rossiter
Vera Rothery
Irene Margaret Rowan
Kathleen Beatrice Rowlands
Hellmuth Royen
Marjorie Runnett
June Kathleen Ryan
Joyce Doreen Ryder
Evelyn Patricia Sabin
Olivia Joan Bernadette Sandford
Annis Sandvos
Elizabeth Sauer
Margaret S. Sauer
Eileen Dorothy Saunders
Iris May Saunders
Dhr. J.H. Schat
Anna Schloßmacher
Bertha Schramm
Maria Schumacher
Agathe Schuurman
Christina Muir Scott
Sarah Grace Scott
Evelyn Scott-Brown
Gordon Sear
Harold Amos Shaill
E. M. Shantall
Mary Sharp
John Bernard Bertram Shaw

Gloria Barbara Shawley
Olga Mabel Sheldon
Florence Shiels
Margaret Malcolm Shier
Gladys Lilian Shonk
Dorothy Short
Frank Henry Shotter
Robina Siddell
Beatrice Joy Silvester
Edith Isabella Simpson
Joan Margaret Simpson
Ruth Simpson
Keith Alec Sinclair
Dora Skipsey
Betty Elsie Slade
Ivy Slater
Charlotte Smale
Adeline Mary Smith
Nellie Smith
Sara McGregor Sneddon
Elisabeth Sonntag
Emily Marguerite South
Betty May Southorn
Irene Blanche Spackman
Patricia Sparks
Dorothy Sparrow
Edith Winifred Spearing
Christine Spon
Nesta Mary Spooner
John Frederick Gordon Spring
Ada Margaret Spurr
Mollie Weston Squire
Joyce Muriel Squires
Mej. M. L. Stallman
Blodwen Rita Stebbings
Daphne Joy Steere
William Sterrick
Gwendoline Mary Sterry
Robert L. Stevens
Dorothy Hilda Stocks
Ann Hilary Stott
Mary Sweet
Joyce Marion Sycamore
David John Sydes
Lionel Benjamin Sydney
Harole Leslie Sykes
Lilian Marsh Sykes
Jean Edna Sylvester
Avis Doreen Taboni
Wilfred Eustace Taboni
Anne Tayler
Ada Taylor
Freda Mary Taylor
Hannah Taylor
Norman Taylor
Joanna Tedman
Madalyn C. Thomas
Alfred William Thompson
Joan Kathleen Thompson
Sharon E. Thompson
Elizabeth Margaret Thornton
Judy Tintera
Ruth Tischer
Dorothy Elisabeth Todd
Florence May Todd
Kenneth John Richard Todd
Rosa May Evelyn Toomey
Constance Assumpta Townson
Margaret Lily Tozer
Dr. Joachim Traub
Patricia Helen Traverso
Frances K. Trees
Iris Maureen Trehern
Denis Albert Trotman
Elder Family Living Trust
Samuel & Hilda S. Duff
Jean Lilian Tucknott
Genevieve F. Tupper
Arthur Edward Turner
Margaret Doreen Turner
Sylvia Irene Turner
A.M. Turtle
Anne M. Unick

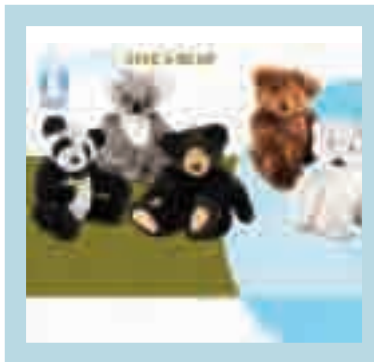


Mevrouw Van Mourik
 Dr. V. F. Vanderlip
 Mrs. R. Vanderlip
 Evelyn Mary Veale
 Olive Margaret Vearncombe
 W. F. Velleman
 Charlotte Venchuk
 Dorothy Ventris
 Kathleen Mary Verrall
 Mej. J. C. W. Versluijs
 Zoe Marguerite Waddington
 Philip Dudley Waine
 Mary Jean Wakenell
 Mary Rosalind Walker
 Ruth Walker
 Doris May Wallace
 Margaret Embsay
 Wansbrough
 Lilian Edythe Ward-Howlett
 Bernard William Warner
 Patricia Warner
 Walter Stanley Warner
 Joan Wasson
 George Stanley Watmough
 Jessie Rickinson Watson
 Alice Elizabeth Watts
 Joyce Webb
 Norine D. Wedig
 Bettina Constance Wegner
 Jacqueline Weir
 I. Weisse
 Elsie May Wells
 Betty West
 May Lilian Grace Weston
 Edgar Bruce Westwood
 Mevrouw B. Wethmar
 Anneliese Wever
 Camilla Verna White
 Margaret Joyce Whiting
 Mary Whittaker
 Barbara E. Wiedemann
 Mevrouw S. E. Wijnia
 Arthur Desmond Wilkes
 Betty Wilkes
 Dora Lilian Wilkins
 Norma Wilkinson
 E. Willemse-van Eldert
 Geoffrey Edward David
 Williams
 Jacqueline Patricia Williams
 Veronica Rose Williams
 Doris May Wilmore
 Bertha Wilson
 Cynthia Joy Wilson
 Daphne Norah Wilson
 Olwen Wilson
 Brenda Winter
 Manny Wishnoff
 Dennis Witherick
 Winifred May Witt
 V. Pauline Wollaston
 Dorothy Womersley
 Susan Jane Wood
 Ellen Mary Woodage
 June Lillian Woodruffe
 Evelyn Woolison
 Francis Joseph Wright
 Francis Joseph Wright
 Janice Deanna Wright
 Margaret Denny Wright
 Margaret Maud Wright
 Marjorie Kathleen Wright
 Mrs. J. Wynn
 Rose Mary Young
 Lucita Yuhasz
 Harriet Zizicas

PET FUND

The IFAW *Pet Fund* is a great way to honor and thank your best friend. Named for your pet, your fund supports pets in some of the world's most impoverished communities. Your gift is invested into a permanently endowed fund at IFAW, and the annual interest supports hands-on care of dogs and cats in disadvantaged communities around the world, including mobile clinics that provide owner education, veterinary care and sterilization programs. IFAW promotes the strong bond between owners and their pets by helping people understand that healthy pets contribute to the good health of the entire community.

Anonymous THE TONI FUND	Abby Ann Griscorn THE VINNIE FUND
Anonymous THE MEPHISTO & NIKE FUND	Nina Carolyn Gut THE BRANDY & SHERRIE FUND
Linda L. Beggs THE FREDDY FUND	Jan Hayden THE MARSHMALLOW FUND
Sandy C. Bell THE ZEPPELIN & BOZ and KEZZY & BUDDY BOY and POOCHIE & TANGY and TUXEY & FAT BUDDY and JOBY & BABY FUNDS	Michael & Deborah Haynes THE PIXIE, PUMPKIN, HOBIE CAT, SIMON, MUPPET AND MAMA FUND
M. Bonham-Carter THE PATCH FUND	Hans J. Heine THE KLEINHUND FUND
Linda J. Campbell THE LACEY FUND	Ankh Hemminga THE JOERIE FUND
J. M. Cartwright THE PERRY FUND	Dr. Phyllis A. Huene THE GIGI FUND
Ray Castellani THE CASTELLANI DOG FAMILY FUND	Richard Koerner THE TIBBY & BUSTER FUND
G. E. Cook THE SUKI FUND	Christopher & Traci Morris THE GINGER, MOLSON, GOLDY & WYNTON FUND
G. Ellis THE MINNIE FUND	Laura M. Ost THE GHANDI FUND
Miss M. A. Thunder Fairfield THE LEILA FUND	William Payden THE NEELY FUND
Jeffrey G. Fischer THE HOMER FUND	Joan A. Payden THE NEELY FUND
Kurt & Judith Fish THE BUCKY FUND	Don & Shirley Pence THE BUFFY FUND
Mrs. J. Lawrence Frank THE ROSIE THE CAT FUND	Les Pioch THE OZZIE, RILEY, ZIGGY & BUBBA FUND
Fred & Barbara Fried THE BUSTER FUND	Hal & Judy Prince THE ROSIE/EMILY FUND
Karen L. Gibson THE TAZMAN and AFTAN FUND	Robin S. Rawls THE KITTY RYE FUND
Suzanne L. Goodson THE FIONA FUND	Robin S. Rawls THE MISSY LOU FUND
G. R. Gratton THE CASTOR & POLLOX FUND	Carol H. Ray THE BUDDY FUND
Gloria Gray THE SALLY FUND	Jeff & Sharon Rosenblum FUND OF OUR FRIENDS
C. R. Green THE SMARTIE FUND	Wendy Rosenblum FUND OF OUR FRIENDS



Teddy Bears Help Wild Bears Survive
 Making the world a better place, one bear at a time, has been the mission of the Vermont Teddy Bear Company since it began 25 years ago. The company took that mission global by launching a program that will provide essential financial resources to IFAW. Their *Save the Bears* collection includes 20" Panda, Polar, Grizzly, Black, Moon and Koala teddy bears, all of which face considerable threats in the wild. Five dollars of each sale supports the bear rescue and rehabilitation efforts of IFAW.

Vermont Teddy Bear's contributions directly help care for bears orphaned by the winter den hunts in Russia, provide essential funding to the moon bear center in India, support studies of climate change and its effects on polar bears and marine animals, as well as furthering global conservation efforts.

"We wanted to help IFAW and raise awareness of the threats against these incredible animals," said Elisabeth Robert, President and CEO of Vermont Teddy Bear. "It was important to all of us at Vermont Teddy Bear to provide funding from the sale of the new bears to help sustain IFAW's efforts and to support what they are doing to instill change." To date, Vermont Teddy Bear has generously donated more than \$12,000 to further IFAW's bear protection work around the world.

Alison B. Rubin
THE CINNAMON SPICE FUND

Mary E. Shamrock
THE PATCH FUND

Dr. Sarjit K. Sidoo
THE HARI FUND

Sara A. Stalnaker
THE BRONSON FUND

Donald & Delma Taylor
THE BENTLEY
MANCHESTER PET FUND

Richard & Jill Tidman
FUND OF OUR FRIENDS

Michael Vacchione & Kevin Poole
THE BONNIE & MITTENS FUND

CORPORATE MATCHING GIFTS

Many companies match their employees' donations. A matching gift program may double or even triple your donation, so it will go even further to protect animals and habitat.

Aetna Foundation Allstate Giving Campaign AMD Matching Gifts Program American Express Foundation American International Group, Inc. Ameriprise Financial Amgen Foundation Aon Corporation AXA Foundation Bank of America Foundation BD Matching Gift Program Capital Group Companies Chubb & Son Citigroup Foundation Computer Associates Inc. Countrywide Deutsche Bank Americas Foundation Energy For Others Exxon Mobil Foundation, Inc. First Data Corporation First Horizon Matching Gift Program First Tennessee Matching Gift Program Gap Foundation GE Foundation Genentech Global Impact GMAC ResCap Google Matching Gift Program Gorton's Seafoods Harris Bank HSBC Bank USA Corporate Giving Program Hunter Douglas, Inc. IBM Corporation IGIVE.com Holdings, Inc. Illinois Tool Works Foundation ING Foundation ITG Inc. Janus John Hancock Financial Services JustGive Karl Storz Imaging, Inc. Kibble & Prentice Liberty Mutual Group Fund MassMutual Financial Group Meredith Corporation Microsoft Matching Gifts Program Morgan Stanley Nestle	Oppenheimer Funds, Inc. Pearson, Inc. Penguin Group (USA) Inc. PepsiCo Foundation The Pfizer Foundation Pitney Bowes Progressive Insurance Foundation Prudential Foundation R.J. Reynolds Foundation Random House, Inc. Rockefeller Brothers Fund Russell Corporation Sabre Holdings Give Together Campaign Sony Pictures Entertainment Spanion LLC SPX Foundation Sun Microsystems, Inc. Susquehanna International Group, LLP T. Rowe Price Assoc. Foundation Tenet Healthcare Foundation The Boston Consulting Group, Inc. The Charles Schwab Corporation Foundation The Children's Place The Freddie Mac Matching Gift Program The Glenmede Trust Company, N.A. The Home Depot Corp. Contributions Programs The J. P. Morgan Chase Foundation The JM Foundation The McGraw-Hill Companies The New York Times Company Tyco Employee Union Bank of California Foundation Vanguard Group Foundation Verizon Foundation Wachovia Corporation Washington Mutual Matching Gift Program Wellpoint Foundation Williams Community Relations XL America
---	---

CHAMPIONS FOR ANIMALS

Champions for Animals are special donors whose regular monthly support enables IFAW to respond immediately when animals need our help. Champions have their monthly contributions deducted automatically from their bank accounts, saving time, postage and check processing costs. These valued supporters ensure that when animals face danger or disaster, IFAW experts can rush to their aid.



In-Kind Donors

Alex Paen
 Aquatic Adventures
 Benedictus-Smith
 The Brisbane Courier Mail
 Cape Air
 Cape Cod Broadcasting
 Cape Cod Melody Tent
 Cape Cod Times
 Comcast Spotlight
 Connecting Hearts, Inc.
 Dyad Communications, Inc.
 Hyannis Whale Watcher Cruises
 IFAW France — Media BS
 IFAW US — Dubai Municipality
 Initiative Media GmbH
 J.K. Scanlan Company, Inc.
 Nassau Broadcasting
 Ms. Elizabeth Oreck and
 Mr. Gavin Polone
 Ms. Mary Oreck
 The Sunday Telegraph
 Telco Productions
 Mr. Raun Thorp
 Titan Outdoor Advertising Ltd.
 Eric Treworgy
 Yarmouth Conservation Trust

If you would like more information or would like to make a contribution to IFAW, please contact:
 International Fund for Animal Welfare
 Resource Development Office
 290 Summer Street
 Yarmouth Port, MA 02675 USA

Telephone: 1 888 251 0253 Email: giving@ifaw.org
www.ifaw.org

A BETTER WORLD FOR ANIMALS AND PEOPLE, THANKS TO YOU

There are many ways you can leave a lasting and meaningful legacy to animals...

FUTURE FOR ANIMALS SOCIETY |

Throughout IFAW's history, contributors have provided a legacy of hope to animals and their habitats by giving through their estates.

By pledging support to IFAW in your will, investing in a charitable gift annuity or by designating IFAW as the recipient of another planned gift, esteemed members of the *Future for Animals Society* protect animals from cruelty, exploitation and habitat loss far into the future by contributing to IFAW's strength and stability.

Bequests

Including IFAW as a beneficiary in your will is an easy and effective way to protect animals long into the future. You can make your bequest for a specific sum, percentage or the residue of your estate. Of course, you should consult an attorney in drawing up a will, but the following language may be helpful:

"I give, devise, and bequeath to the International Fund for Animal Welfare, a nonprofit organization, located at 290 Summer Street, Yarmouth Port, Massachusetts, the sum of US\$_____ (or a designated percentage or the residue of my estate) to be used by IFAW to further its goal to assist and protect animals around the world."

IFAW gratefully thanks supporters who have already advised us of their intentions to protect animals through naming IFAW in their wills and honors them with membership in the esteemed *Future for Animals Society*. Members receive an annual newsletter and other special insider updates and alerts.



Charitable Gift Annuities

Investing in a charitable gift annuity at IFAW can be an ideal way to make a gift. A gift annuity pays guaranteed fixed income for life and gives you an immediate tax deduction — and a portion of the yearly income from the annuity is even tax-free. You can enjoy the benefits of a gift annuity if you are age 55 and over, with a minimum gift of US\$10,000. You may receive these annuity payments yourself, jointly or designate another person to receive them. And best of all, your gift will ultimately go to further the important work of IFAW by saving animals from both cruelty and extinction.

TRUST PLANS | If you are looking for ways to protect your family and your money, a trust plan may provide the answer. Trusts are remarkably versatile and offer many opportunities to save taxes and broaden your estate plan.

Though there are various kinds of trusts, they share similar features. Your chosen trustee manages the trust assets (principal). The trust can then be set up to pay an income to your beneficiaries. When the trust

ends, the remaining principal will be distributed to other beneficiaries chosen by you. You can establish a trust by an agreement during your lifetime (living trust) or through your will (a testamentary trust).

GIFTS OF REAL ESTATE | A gift of a house, farm, vacation home, office building, undeveloped land or other marketable real property is a wonderful way to help animals and provide you with substantial tax benefits. You may select a way to give that best suits your needs. For example, you may choose to receive a lifetime income or retain lifetime use of your property before donating it to IFAW for sale.

GIFTS OF LIFE INSURANCE | If you own life insurance that is no longer needed to protect your family members or business, consider transferring ownership of the policy to IFAW and naming IFAW as a beneficiary. Whether or not all premiums are paid, you may be entitled to an income tax deduction (and possible estate tax deduction) for such a gift.

You can also name IFAW as the primary or contingent beneficiary of a new or existing policy without transferring ownership of the policy.

GIFTS OF RETIREMENT PLAN ASSETS |

Many individuals have accumulated funds in tax-deferred retirement accounts, which include profit-sharing plans, IRAs, 401(k)s and 403(b)s. Funds withdrawn from these accounts are usually taxed at both high income and estate tax rates. It is possible that at death, less than US\$30 of US\$100 in a retirement account will reach non-spouse beneficiaries. However, by donating retirement plan assets, donors avoid these taxes.



1 THE SONG OF THE WHALE TEAM DEPLOYS A HYDROPHONE TO DETECT SPERM WHALES OFF THE COAST OF LIBYA. IFAW HAS PIONEERED NON-INVASIVE RESEARCH TECHNIQUES THAT STUDY MARINE MAMMALS WITHOUT HARMING THEM.

2 IFAW-RUN CLINICS IN JAMES BAY CREE COMMUNITIES IN NORTHERN CANADA PROVIDED SPAY/NEUTER SURGERIES AND VETERINARY CARE TO NEARLY 500 CATS AND DOGS.

3 RAGING WILDFIRES ACROSS INDONESIA DROVE DOZENS OF ENDANGERED ORANGUTANS FROM THEIR JUNGLE HABITAT. IFAW HELPED RESCUE THIS INFANT AND BROUGHT IT TO A REHABILITATION CENTER IN KALIMANTAN, BORNEO.

4 IFAW'S EMERGENCY RELIEF TEAM HELPED CARE FOR INJURED ANIMALS, LIKE THIS DOG, FOLLOWING MASSIVE FLOODING AND MUDSLIDES IN SULAWESI, INDONESIA.

GIFTS OF APPRECIATED SECURITIES |

Gifts of stocks to IFAW are an important way to help eliminate cruelty to animals and protect habitat around the world. The best way to make a stock gift is to have your broker transfer your stocks directly to IFAW. That way, you can realize the very best tax-savings: a charitable deduction for the full present fair market value, and no tax on the appreciation (capital gains).

If you would like to make a gift of stock, please notify IFAW's Resource Development Office toll-free at 1-888-251-0253. Then ask your broker to transfer your stock into the IFAW Brokerage Account: Merrill Lynch, Account 699-04122, DTC #5198, 1545 Iyannough Road, Hyannis, MA 02601

MATCHING GIFTS | Many employers match donations made by their employees. When you contribute to IFAW, please check with your company's Human Resources department to see if they will match your gift. A matching gift program may double or even triple your donation, helping animals in need twice as much.

SPECIAL WAYS TO MAKE A GIFT | All of IFAW's achievements have been made possible through the generosity of supporters like you who share our vision of a world where people and animals live in harmony, where no animal suffers from cruelty, exploitation or unethical trade. Whether you choose to give something back for the love and affection of a family pet or want to preserve the dignity and rightful place of the world's wildlife, we are grateful for your commitment to animals.



Childhood Inspiration Comes Full Circle

Global Whale Program Manager Patrick Ramage was first introduced to IFAW when he worked for the Global Legislators Organization for a Balanced Environment (GLOBE). IFAW supported some of GLOBE's work on environmental issues, particularly for whales and the marine environment. In 1996, Mr. Ramage came to IFAW as Director of Public Affairs and grew that department from a staff of one to a global team of communications professionals working to get IFAW's message out to media, supporters and decision-makers around the world.

While the Public Affairs department promotes all IFAW programs, it was the work on great whales that resonated most with Mr. Ramage. As a child he spent a lot of time with his father at the ocean, and some of his most meaningful early experiences were connected to the sea. When the opportunity came to lead IFAW's global whale program, he leapt at it. And he has already seen some success: At the 2007 International Whaling Commission (IWC) meeting in Anchorage, Alaska, there was a significantly strengthened majority for whale conservation and increased action by conservation-minded governments to confront Japan's increasing whaling activities.

When his son Henry joined him in campaigning for whales prior to the IWC meeting, Mr. Ramage felt he'd come full circle. He stated, "The moratorium on commercial whaling was one of the most important animal welfare achievements of the last century. Our generation must now do its part to ensure these magnificent creatures continue to grace the world's oceans for generations to come.

"As we collected children's whale artwork to bring to the IWC, we were reminded daily of the magical connection between children and whales and the special hold these creatures have on us all."

NAMED PET FUND GIFTS | You can memorialize or honor a beloved pet through an IFAW Pet Fund. With a minimum gift of US\$5,000, IFAW will invest your donation to build an endowment for the future to help dogs and cats. The interest income generated will be used to help rescue, nurture and protect dogs and cats in impoverished communities around the world. It's a loving way to create a lasting tribute to a loyal companion and receive the tax benefits of making a charitable gift.

TRIBUTE AND MEMORIAL GIFTS |

Memorial and Tribute gifts are a wonderful way to honor special people and events. Whether your gift is made in memory of a loved one or in honor of a special occasion such as a wedding, birthday or holiday, your gift celebrates and shares a love for animals. Newlyweds may choose to direct gifts to IFAW instead of accepting wedding presents, managers may make a holiday gift to employees via separate contributions to IFAW and even marathon runners can collect pledges to IFAW before a race. Use your creativity along with your desire to protect animals and preserve habitat!

If you would like further information on any of these giving opportunities, please contact the IFAW Resource Development Office toll-free at 1-888-251-0253 or email giving@ifaw.org. If you live outside the United States, please write to the office listed on the back cover for giving opportunities in your country.



OFFICES IN:

AUSTRALIA
8-10 Belmore Street
Surry Hills
Sydney NSW 2010

BELGIUM
1 boulevard Charlemagne, Bte. 72
B-1041 Brussels

CANADA
Suite 612
1 Nicholas Street
Ottawa, Ontario K1N 7B7

CHINA
Room 908, Golden Tower
No. 1 Xibahe South Road
Chaoyang District
Beijing 100028

FRANCE
4 rue Edouard Mignot
BP 1426
51065 Reims Cedex

GERMANY
Kattrepelsbrücke 1
D-20095 Hamburg

INDIA
IFAW/Wildlife Trust of India
A-220, New Friends Colony
New Delhi 110065

JAPAN
1-6-10-203 Saiwaicho
HigashiKurume-shi
Tokyo, 203-0052

KENYA
ACS Plaza, 2nd floor
Lenana Road
Post Office Box 25499
00603 Nairobi

MEXICO
Tecoyotitla No. 274
Col. Florida CP 01030
Mexico City, DF

THE NETHERLANDS
Javastraat 56
2585 AR The Hague

RUSSIA
Khlebny pereulok, 19-B
121069 Moscow

SOUTH AFRICA
77 Church Street
Cape Town 8000

UNITED ARAB EMIRATES
Bastakiya Historical Buildings, Dar 107
P.O. Box 43756
Dubai

UNITED KINGDOM
87-90 Albert Embankment
London SE1 7UD

UNITED STATES OF AMERICA
1350 Connecticut Avenue NW
Suite 1220
Washington, DC 20036